

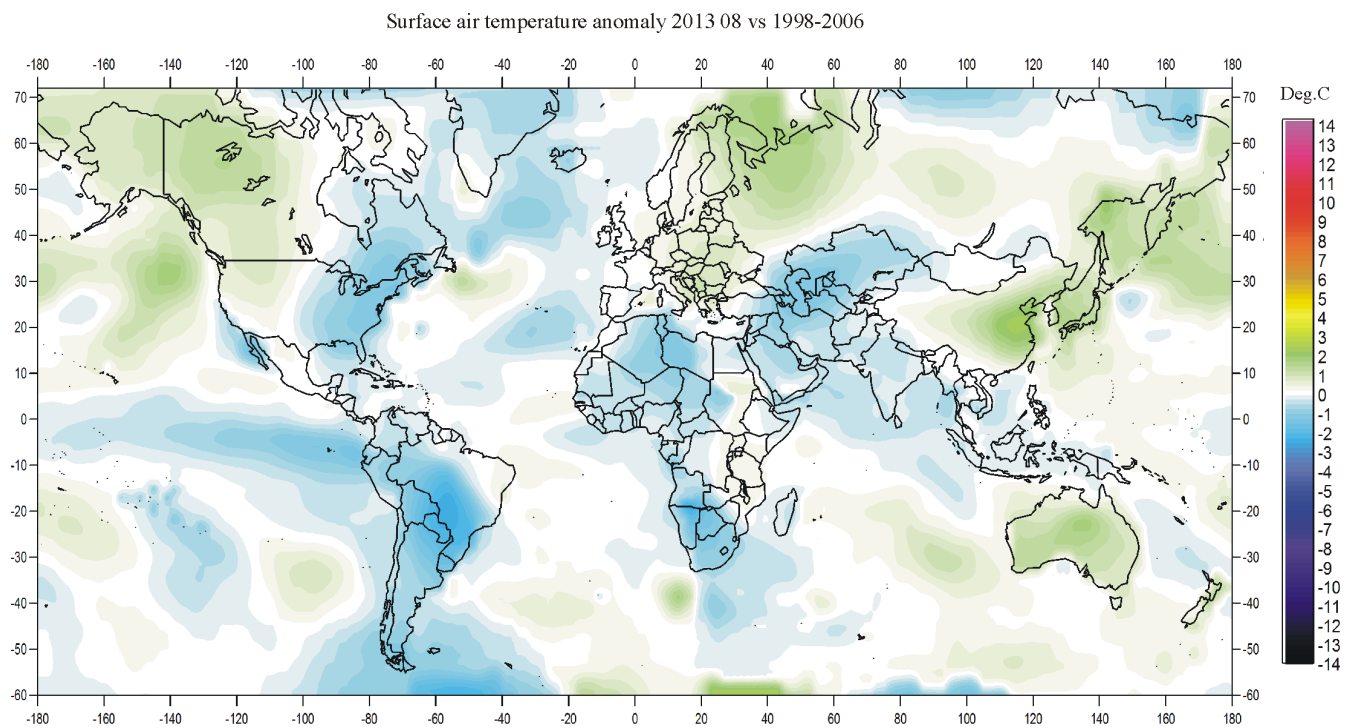
# Climate4you update August 2013



## Contents:

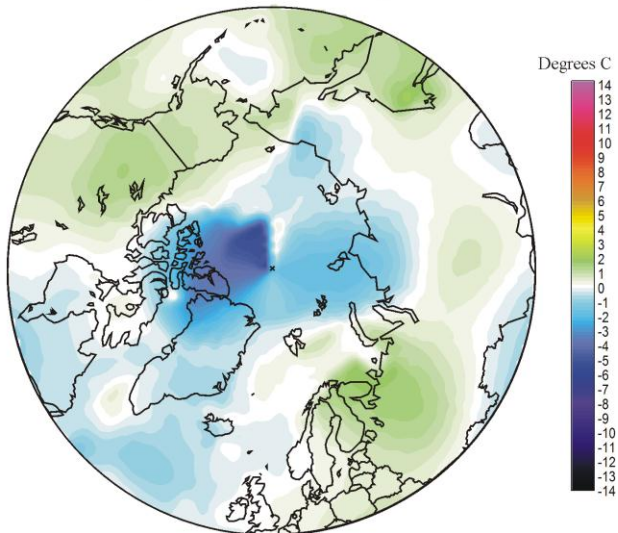
Page 2:	August 2013 global surface air temperature overview
Page 3:	Comments to the August 2013 global surface air temperature overview
Page 4:	Lower troposphere temperature from satellites
Page 5:	Global surface air temperature
Page 8:	Global surface air temperature linear trends
Page 9:	Global temperatures: All in one
Page 10:	Global sea surface temperature
Page 13:	Global ocean heat content uppermost 700 m
Page 14:	North Atlantic heat content uppermost 700 m
Page 15:	Zonal lower troposphere temperatures from satellites
Page 16:	Arctic and Antarctic lower troposphere temperatures from satellites
Page 17:	Arctic and Antarctic surface air temperatures
Page 20:	Arctic and Antarctic sea ice
Page 22:	Global sea level
Page 23:	Northern Hemisphere weekly snow cover
Page 24:	Atmospheric CO <sub>2</sub>
Page 25:	Global surface air temperature and atmospheric CO <sub>2</sub>
Page 28:	Last 20 year monthly surface air temperature change
Page 29:	Climate and history; one example among many: <i>Year 1600-2000: Cyclic temperature variations and Japanese sardine outbursts</i>

## August 2013 global surface air temperature overview

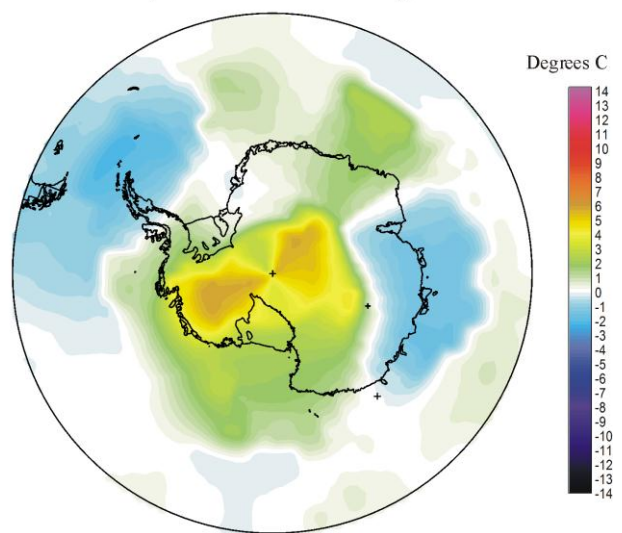


2

Air temperature 201308 versus average 1998-2006



Air temperature 201308 versus average 1998-2006



August 2013 surface air temperature compared to the average 1998-2006. Green-yellow-red colours indicate areas with higher temperature than the 1998-2006 average, while blue colours indicate lower than average temperatures. Data source: [Goddard Institute for Space Studies](#) (GISS)

General: This newsletter contains graphs showing a selection of key meteorological variables for the past month. All temperatures are given in degrees Celsius.

In the above maps showing the geographical pattern of surface air temperatures, the period 1998-2006 is used as reference period. The reason for comparing with this recent period instead of the official WMO 'normal' period 1961-1990, is that the latter period is affected by the relatively cold period 1945-1980. Almost any comparison with such a low average value will therefore appear as high or warm, and it will be difficult to decide if and where modern surface air temperatures are increasing or decreasing at the moment. Comparing with a more recent period overcomes this problem.

In addition, the GISS temperature data used for preparing the above diagrams show a rather pronounced temporal instability for data before 2000 (see p. 6). Any comparison with the WMO 'normal' period 1961-1990 is therefore influenced by monthly changing values for the so-called 'normal' period, and therefore not suitable as reference using GISS data.

In addition to the above consideration, the recent temperature development suggests that the time window 1998-2006 may roughly represent a global temperature peak. If so, negative temperature anomalies will gradually become more and more widespread as time goes on. However, if positive anomalies instead gradually become more widespread, this reference period only represented a temperature plateau.

In the other diagrams in this newsletter the thin line represents the monthly global average value, and the thick line indicate a simple running average, in most cases a simple moving 37-month average, nearly corresponding to a three year average. The 37-month average is calculated from values covering a range from 18 month before to 18 months after, with equal weight for every month.

The year 1979 has been chosen as starting point in many diagrams, as this roughly corresponds to both the beginning of satellite observations and the onset of the late 20<sup>th</sup> century warming period. However, several of the records have a much longer record length, which may be inspected in greater detail on [www.Climate4you.com](http://www.Climate4you.com).

### August 2013 global surface air temperatures

General: On average, global air temperatures in August were near the 1998-2006 average, with no significant change to the previous months. All three surface air temperature records continue to show negative temperature trend for the last 5 and 10 years (page 8).

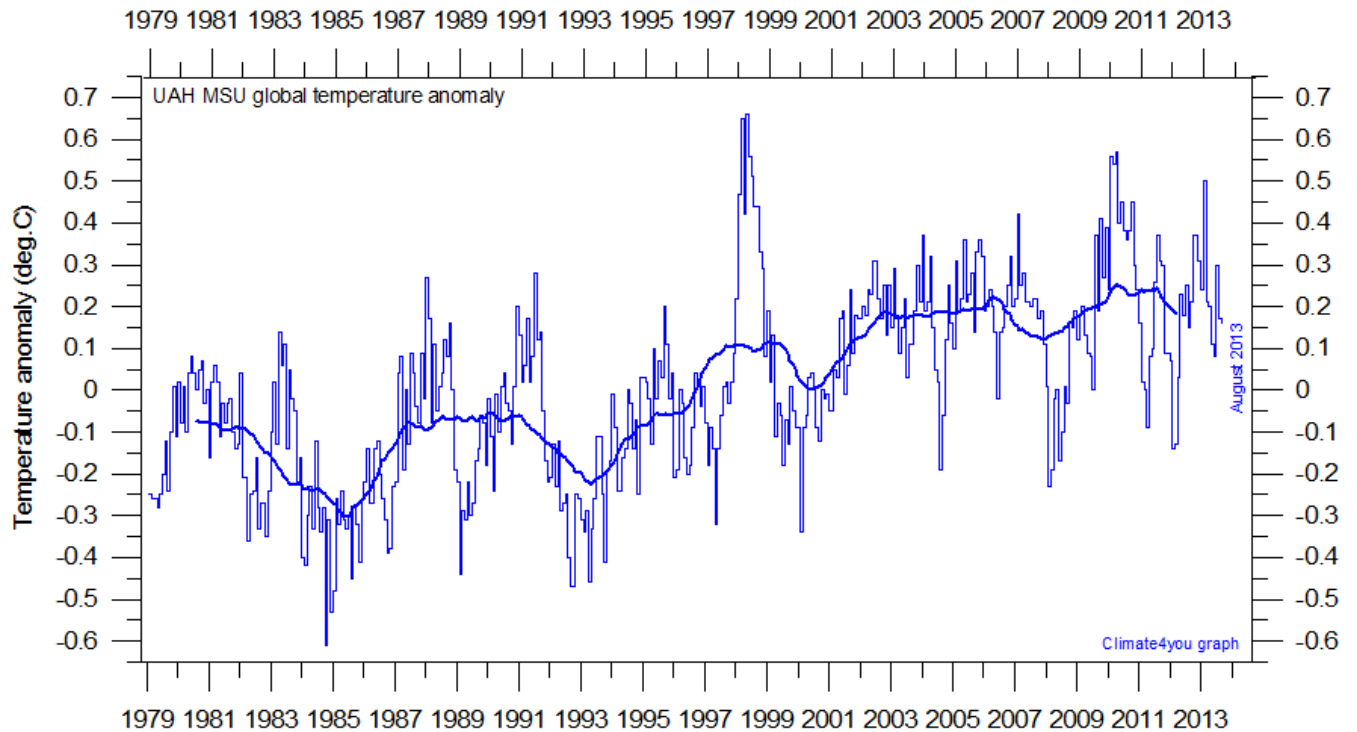
The Northern Hemisphere was characterised by temperature contrasts between individual regions, although somewhat smaller than during the previous months. Most of eastern North America, Greenland and northern Siberia experienced below average temperatures. Western North America and most of eastern Europe with Russia had above average temperatures. Also eastern China and Japan saw above average temperatures. Most of the Arctic was relatively cold, especially in the region between Canada and the North Pole.

Near Equator temperatures conditions were generally below the 1998-2006 average.

The Southern Hemisphere temperatures was mainly below or near average 1998-2006 conditions. However, the major part of the Antarctic continent had above average temperatures, especially in West Antarctica, especially in West Antarctica and adjoining parts of East Antarctica.

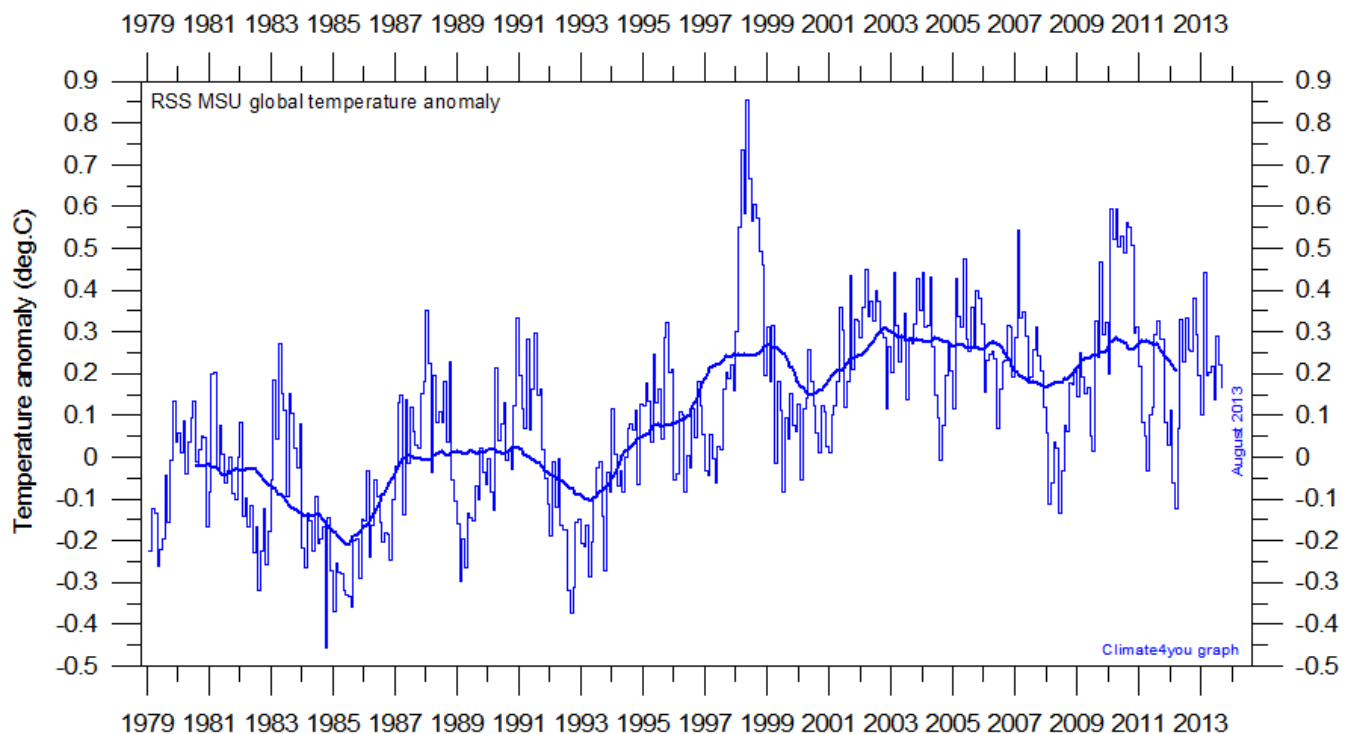
The global oceanic heat content has been rather stable since 2003/2004, although with a small upward trend (page 13).

## Lower troposphere temperature from satellites, updated to August 2013



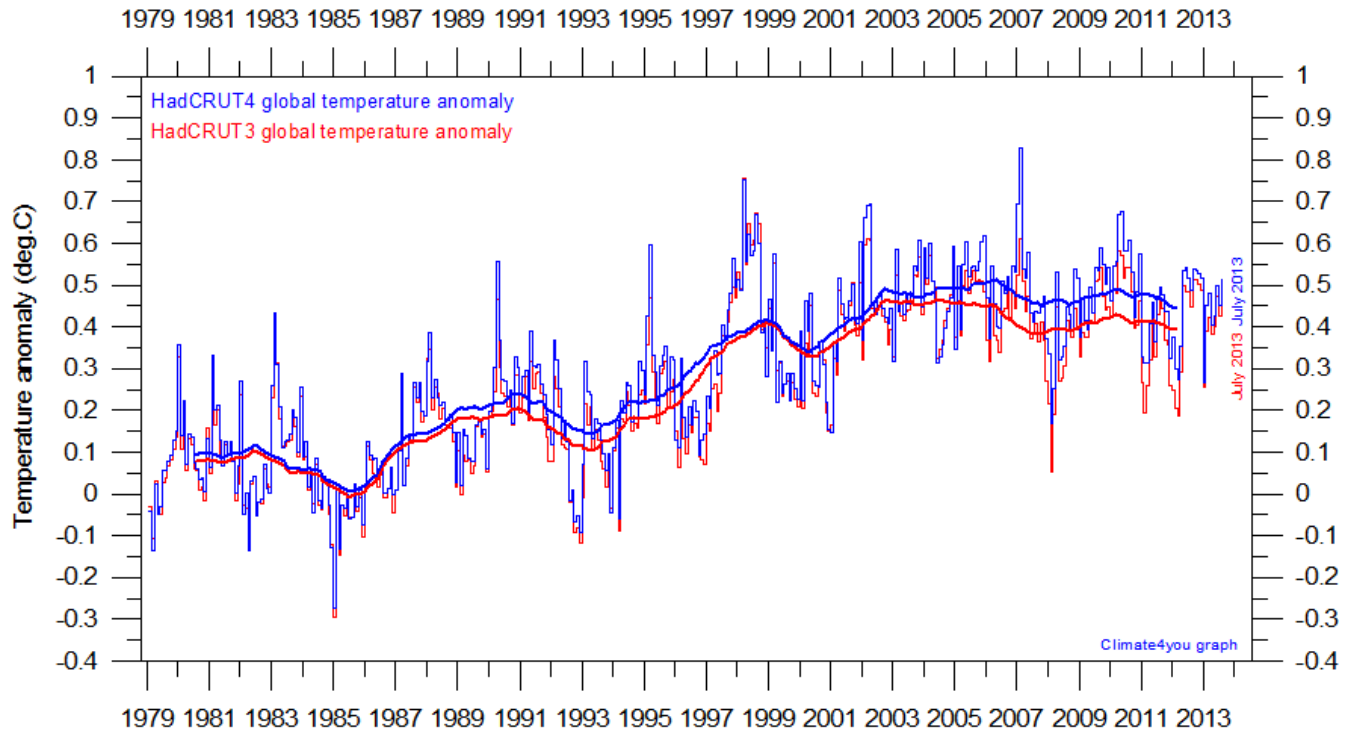
Global monthly average lower troposphere temperature (thin line) since 1979 according to [University of Alabama](#) at Huntsville, USA. The thick line is the simple running 37 month average.

4



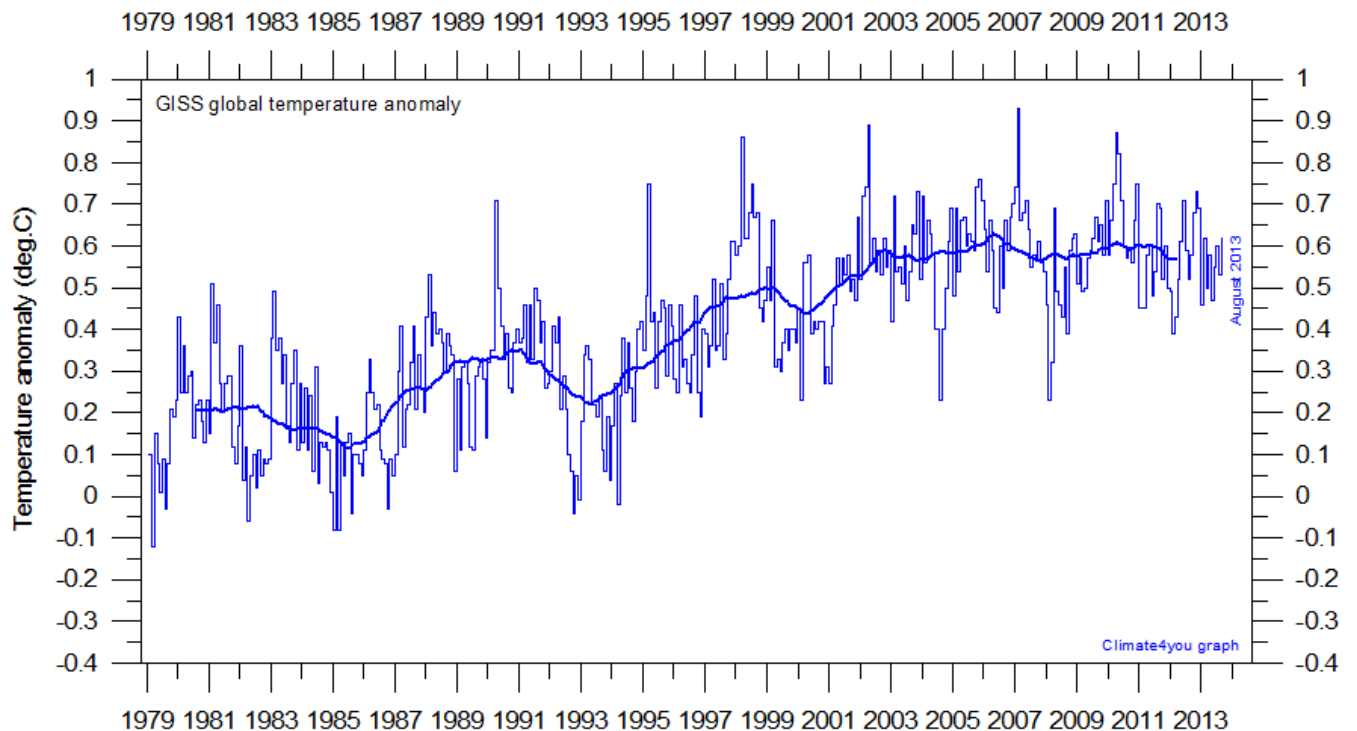
Global monthly average lower troposphere temperature (thin line) since 1979 according to according to [Remote Sensing Systems](#) (RSS), USA. The thick line is the simple running 37 month average.

## Global surface air temperature, updated to August 2013

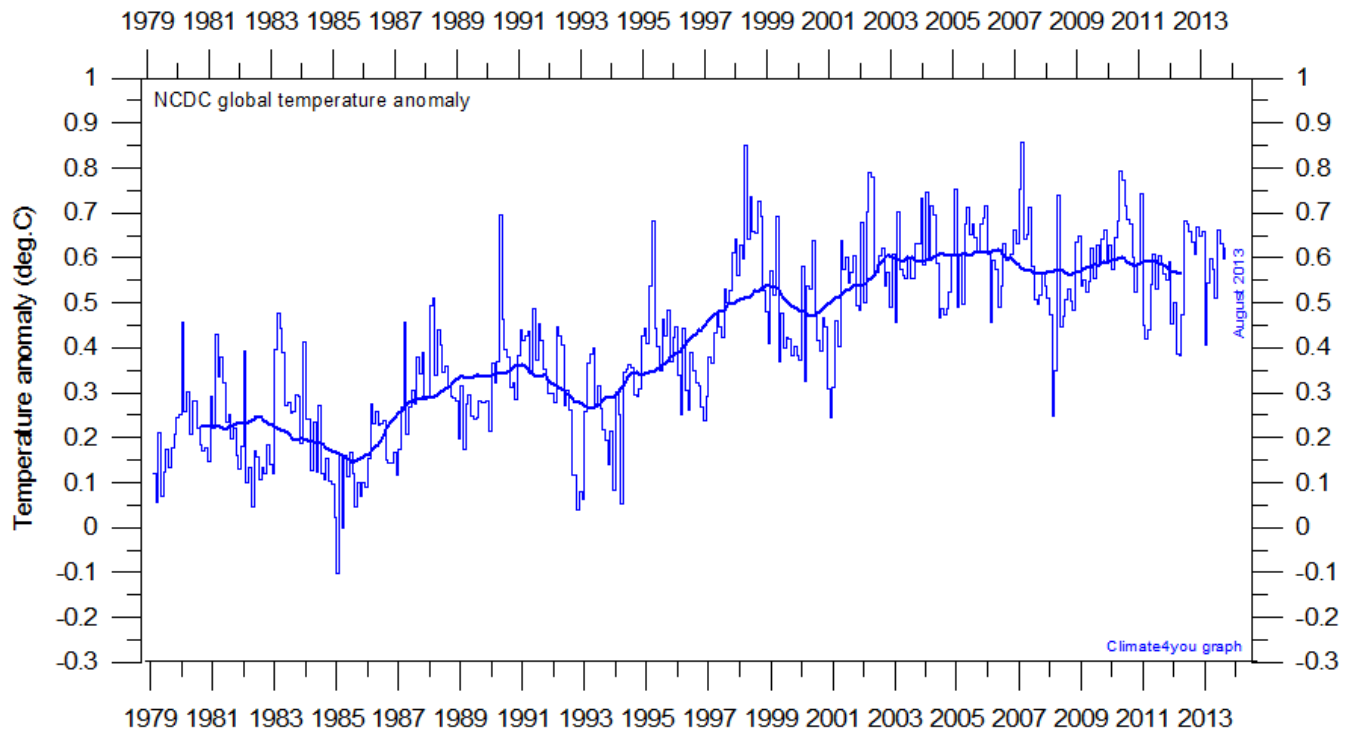


Global monthly average surface air temperature (thin line) since 1979 according to according to the Hadley Centre for Climate Prediction and Research and the University of East Anglia's [Climatic Research Unit \(CRU\)](#), UK. The thick line is the simple running 37 month average. Version HadCRUT4 (blue) is now replacing HadCRUT3 (red). Please note that this diagram has not been updated beyond July 2013.

5



Global monthly average surface air temperature (thin line) since 1979 according to according to the [Goddard Institute for Space Studies \(GISS\)](#), at Columbia University, New York City, USA. The thick line is the simple running 37 month average.



Global monthly average surface air temperature since 1979 according to according to the [National Climatic Data Center](#) (NCDC), USA. The thick line is the simple running 37 month average.

#### A note on data record stability:

All the above temperature estimates display changes when one compare with previous monthly data sets, not only for the most recent months as a result of supplementary data being added, but actually for all months back to the very beginning of the records. Presumably this reflects recognition of errors, changes in the averaging procedure, and the influence of other phenomena.

None of the temperature records are stable over time (since 2008). The two surface air temperature records, NCDC and GISS, show apparent systematic changes over time. This is exemplified the diagram on the following page showing the changes since May 2008 in the NCDC global surface temperature record for January 1915 and January 2000, illustrating how the difference between the early and late part of the temperature records gradually is growing by administrative means.

You can find more on the issue of temporal stability (or lack of this) on [www.climate4you](http://www.climate4you) (go to: *Global Temperature*, followed by *Temporal Stability*).

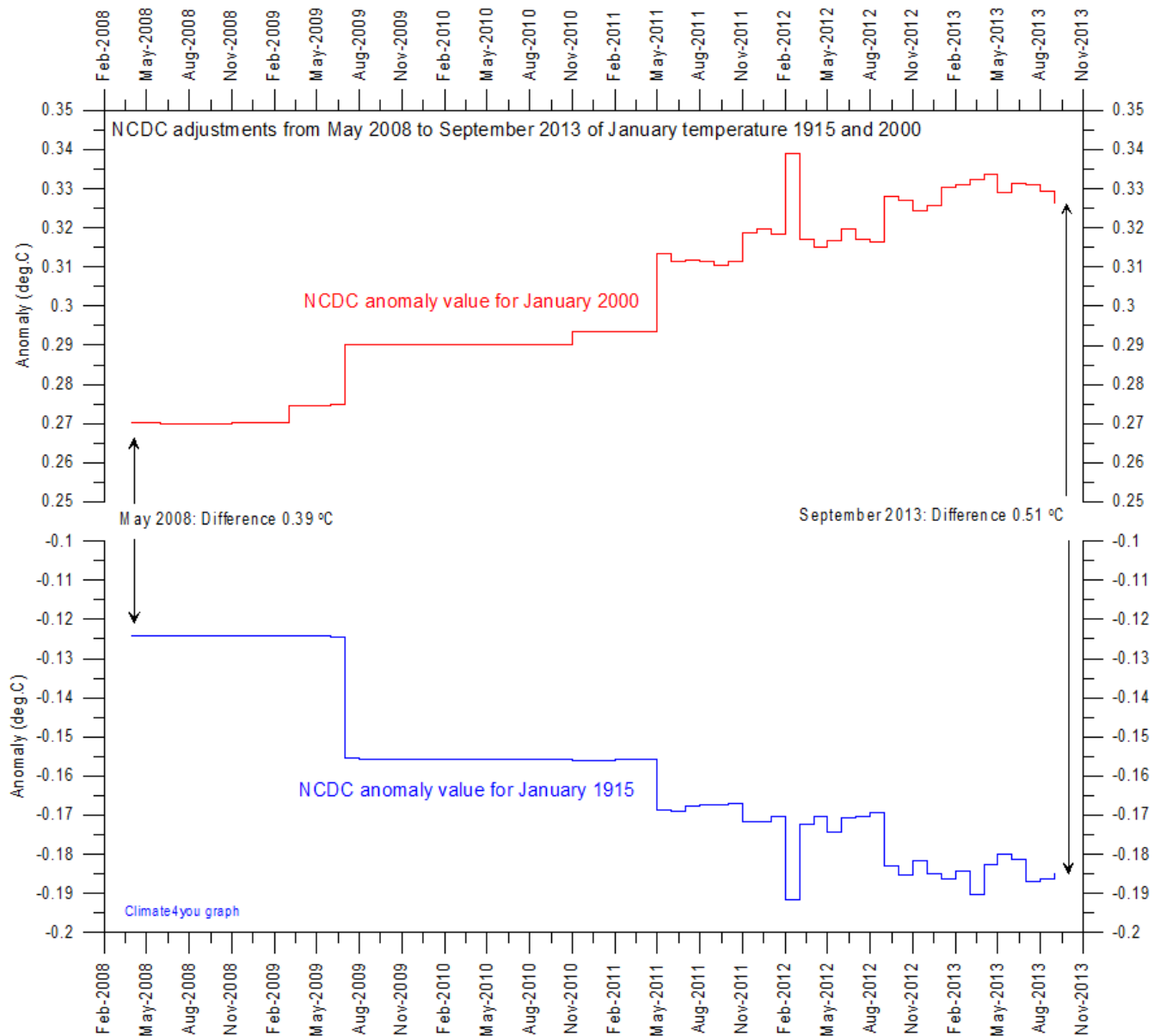


Diagram showing the adjustment made since May 2008 by the [National Climatic Data Center](#) (NCDC) in the anomaly values for the two months January 1915 and January 2000.

June 2013: By administrative means the July 2013 temperature increase from January 1915 to January 2000 has grown from 0.39 to 0.51 °C, representing an about 31% increase of the original temperature increase reported in May 2008.

## Global surface air temperature linear trends

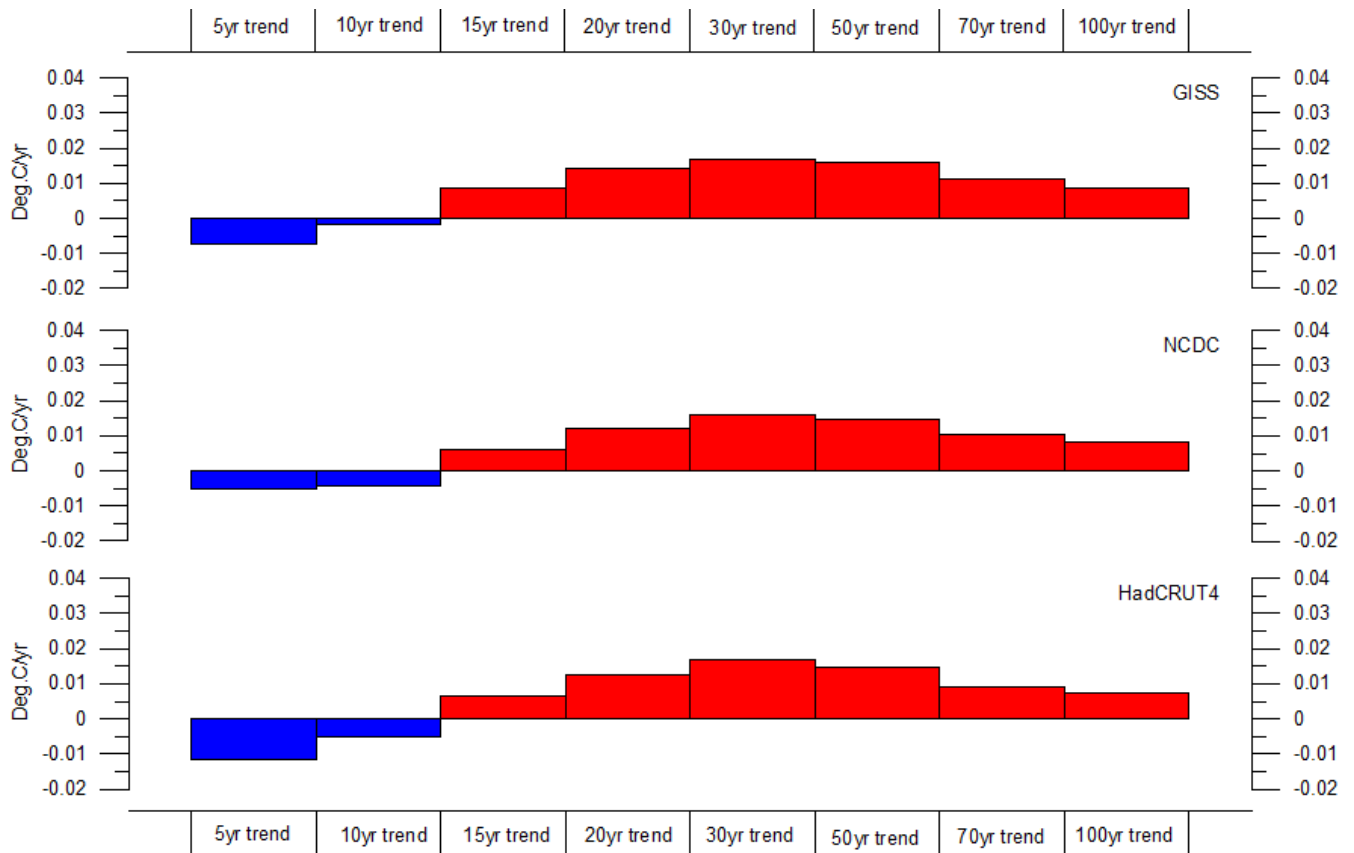
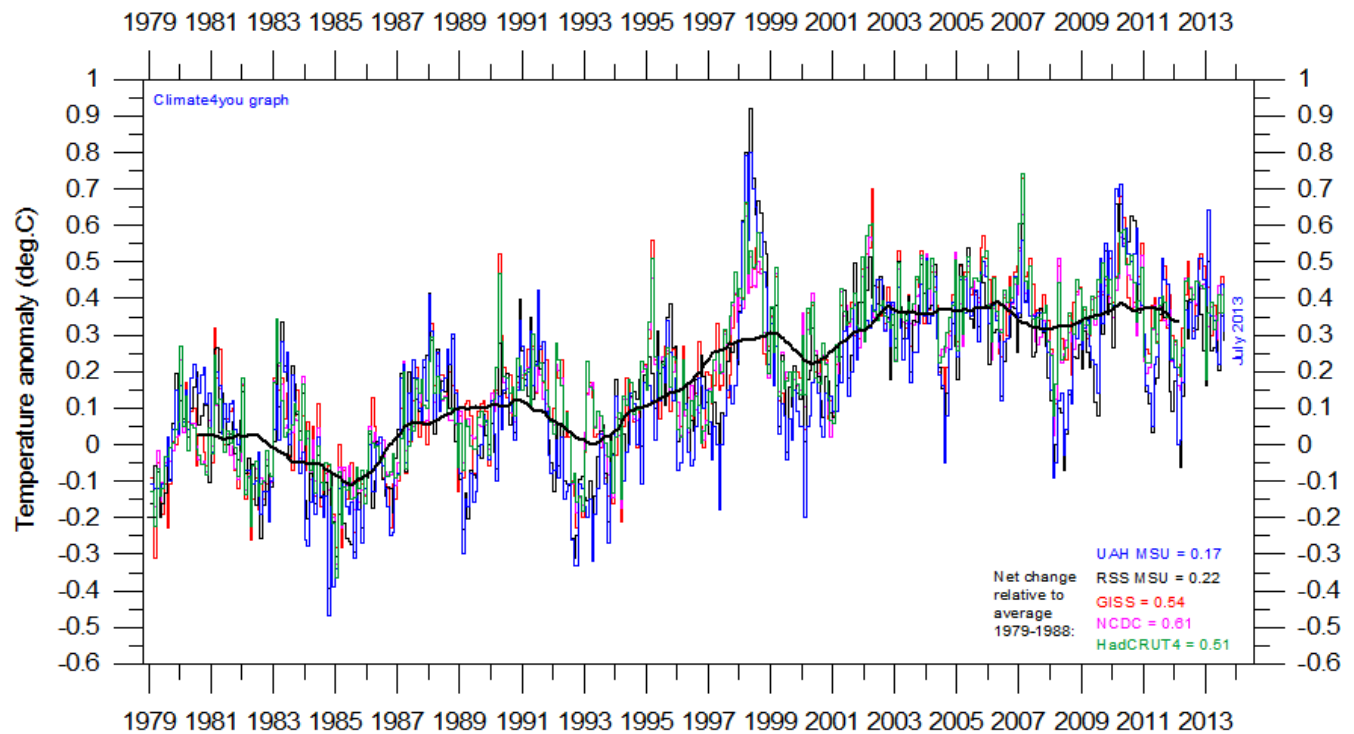


Diagram showing the latest 5, 10, 20, 30, 50, 70 and 100 year linear annual global temperature trend, calculated as the slope of the linear regression line through the data points, for three surface-based temperature estimates (GISS, NCDC and HadCRUT4). Last month included in all analyses: July 2013.



9

*Superimposed plot of all five global monthly temperature estimates. As the base period differs for the individual temperature estimates, they have all been normalised by comparing with the average value of the initial 120 months (10 years) from January 1979 to December 1988. The heavy black line represents the simple running 37 month (c. 3 year) mean of the average of all five temperature records. The numbers shown in the lower right corner represent the temperature anomaly relative to the individual 1979-1988 averages.*

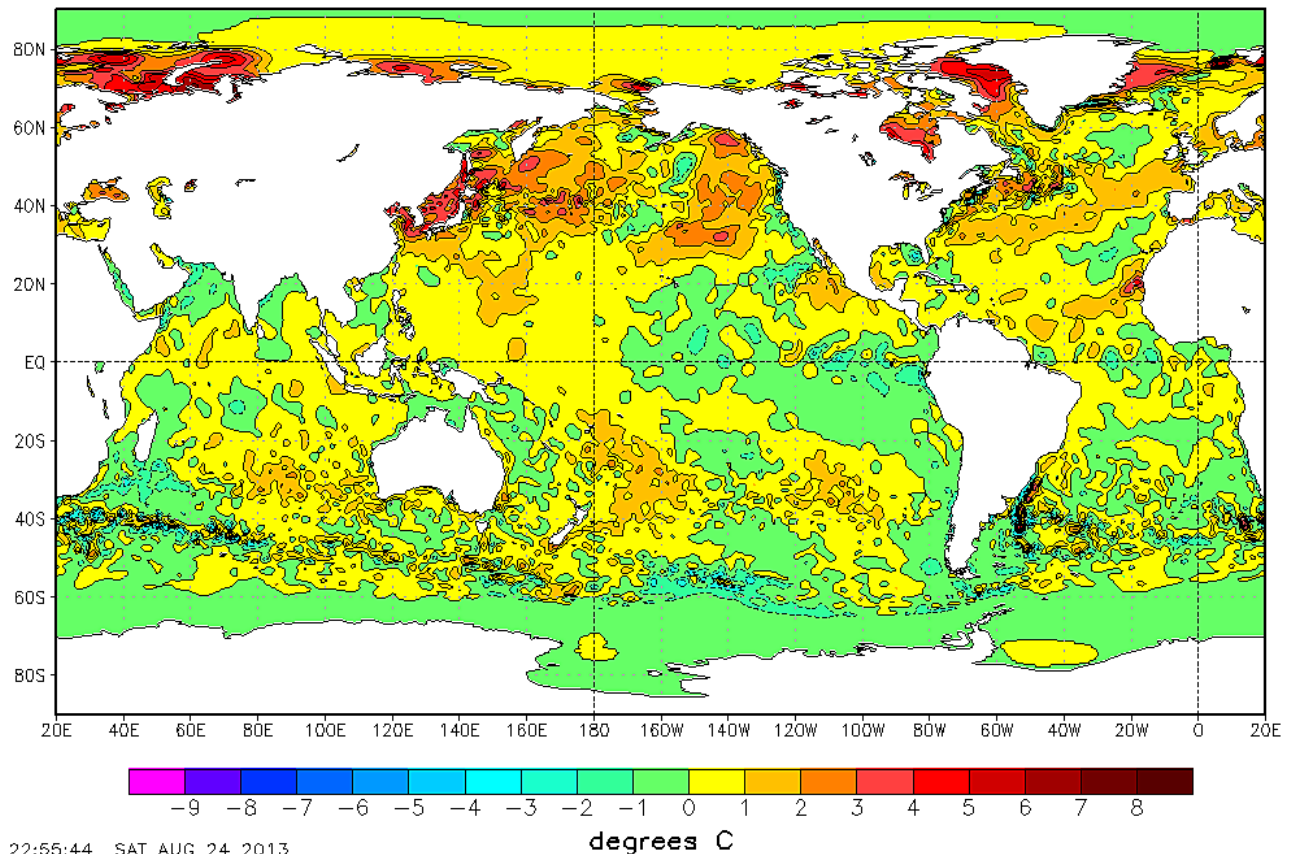
It should be kept in mind that satellite- and surface-based temperature estimates are derived from different types of measurements, and that comparing them directly as done in the diagram above therefore in principle may be problematical. However, as both types of estimate often are discussed together, the above diagram may nevertheless be of some interest. In fact, the different types of temperature estimates appear to agree quite well as to the overall temperature variations on a 2-3 year scale, although on a shorter time scale there are often considerable differences between the individual records.

All five global temperature estimates presently show an overall stagnation, at least since 2002. There has been no increase in global air temperature since 1998, which however was affected by the oceanographic El Niño event. This stagnation does not exclude the possibility that global temperatures will begin to increase again later. On the other hand, it also remain a possibility that Earth just now is passing a temperature peak, and that global temperatures will begin to decrease within the coming years. Time will show which of these two possibilities is correct.

## Global sea surface temperature, updated to late August 2013

NOAA/NWS/NCEP/EMC Marine Modeling and Analysis Branch

RTG\_SST Anomaly (0.5 deg X 0.5 deg) for 24 Aug 2013



*Sea surface temperature anomaly on 24 August 2013. Map source: National Centers for Environmental Prediction (NOAA).*

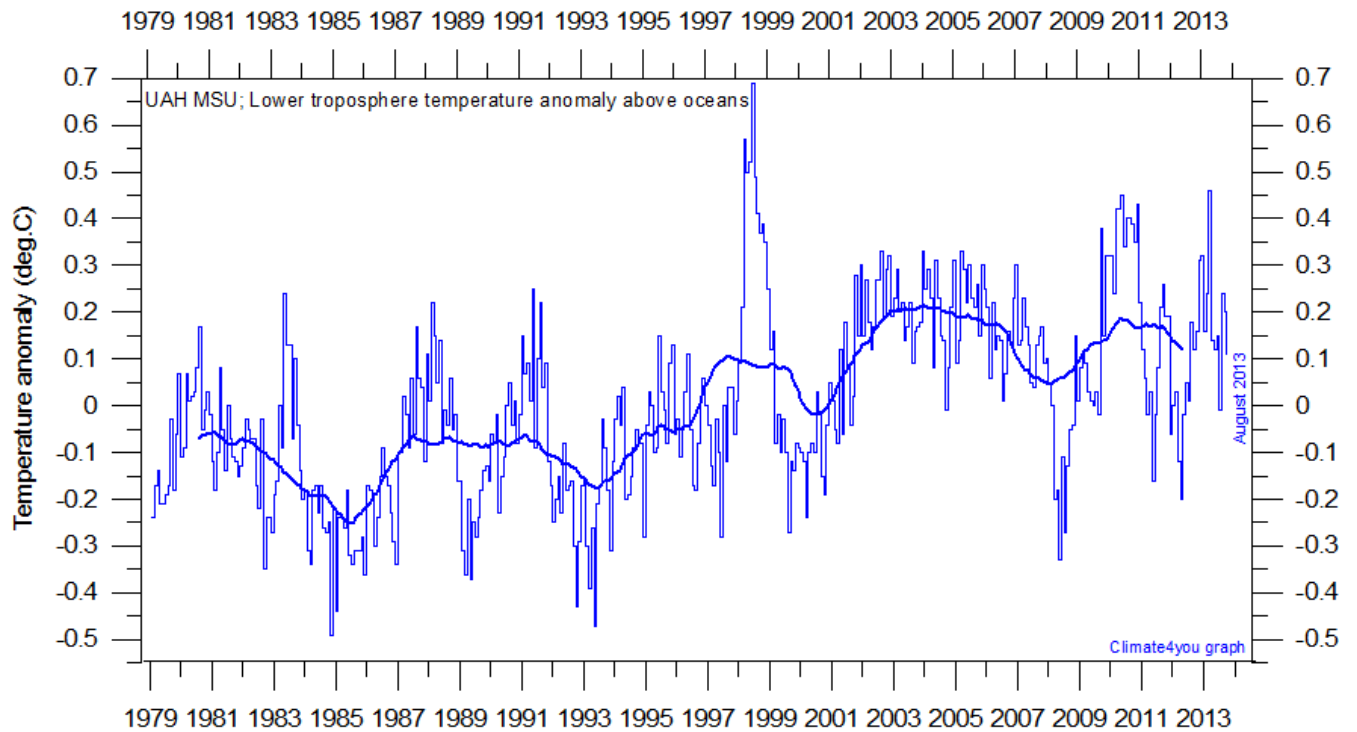
Because of the large surface areas near Equator, the temperature of the surface water in these regions is especially important for the global atmospheric temperature (p.3-5).

Relatively cold water is slowly spreading across the Pacific Ocean near the Equator, and may influence global air temperatures in the months to come.

The significance of any such short-term cooling or warming reflected in air temperatures should not be over stated. Whenever Earth experiences cold La Niña or warm El Niño episodes (Pacific Ocean)

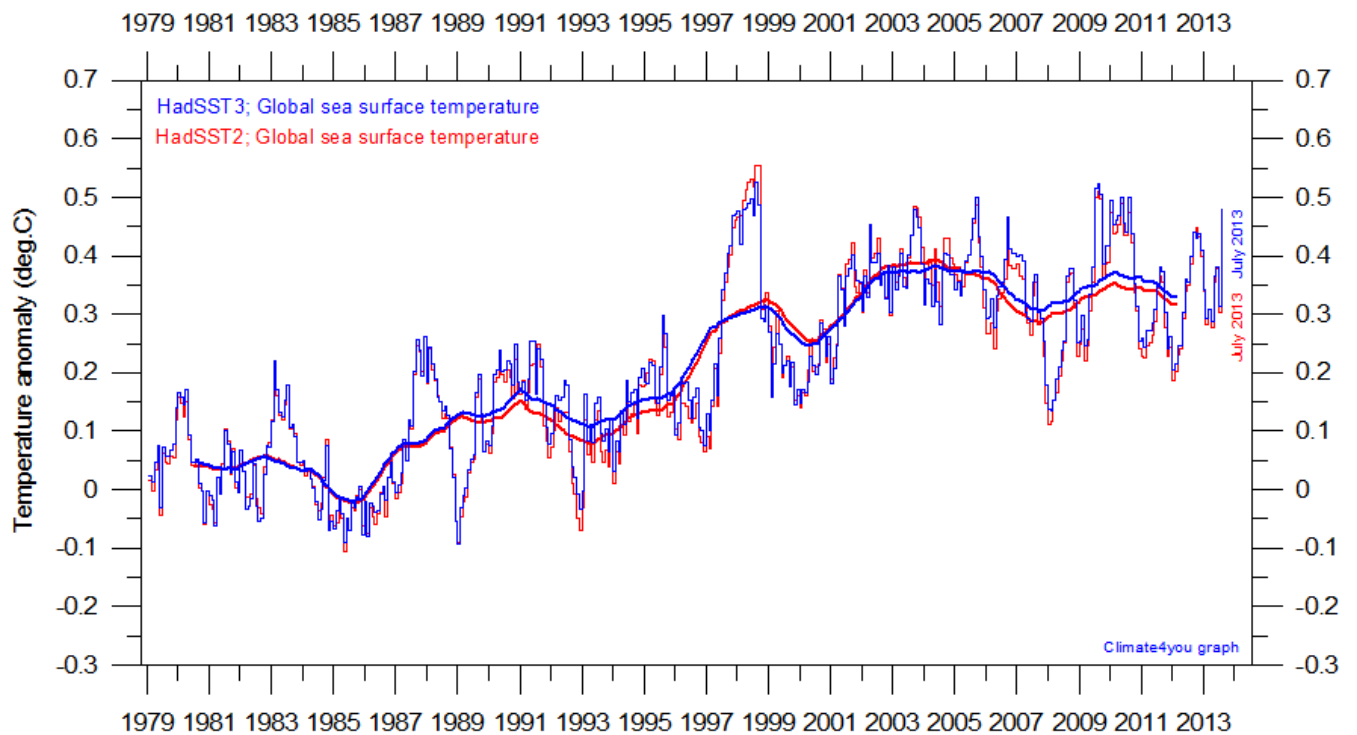
major heat exchanges takes place between the Pacific Ocean and the atmosphere above, eventually showing up in estimates of the global air temperature.

However, this does not reflect similar changes in the total heat content of the atmosphere-ocean system. In fact, global net changes can be small and such heat exchanges may mainly reflect redistribution of energy between ocean and atmosphere. What matters is the overall temperature development when seen over a number of years.

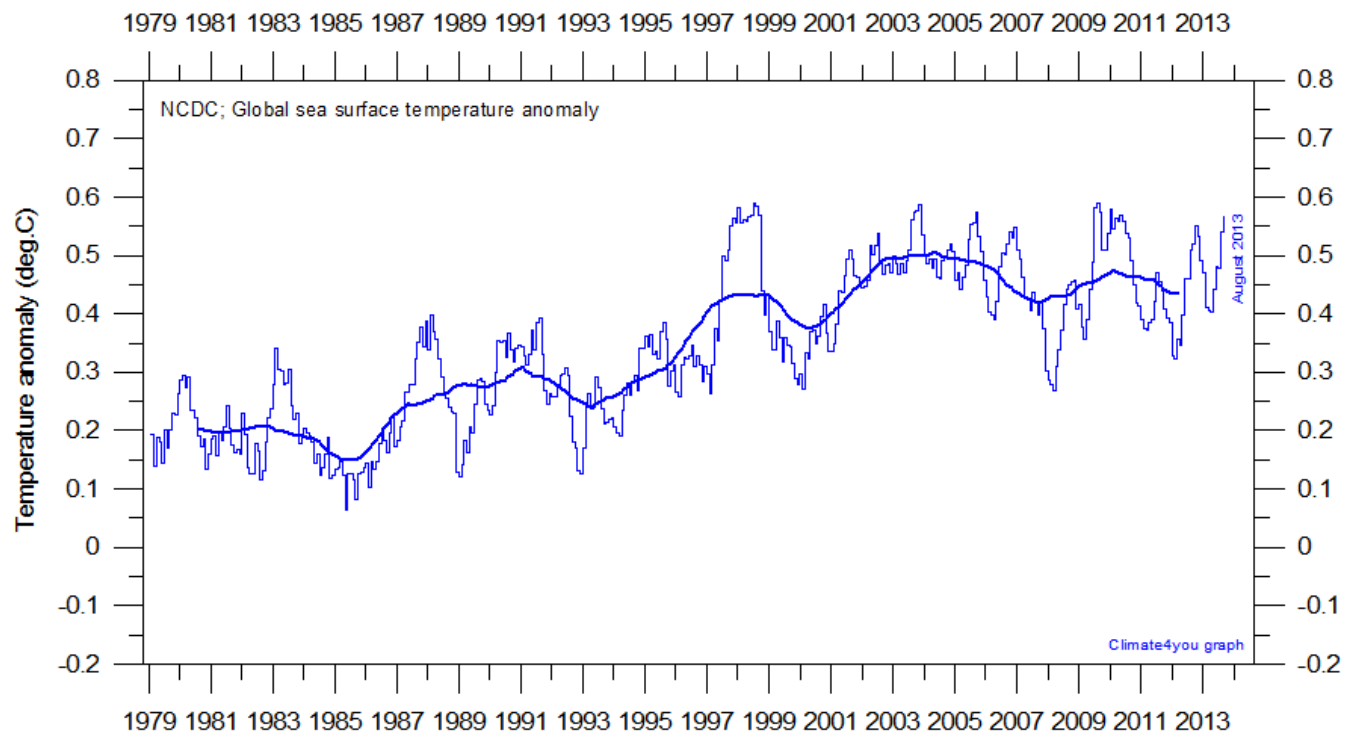


Global monthly average lower troposphere temperature over oceans (thin line) since 1979 according to [University of Alabama](#) at Huntsville, USA. The thick line is the simple running 37 month average.

11

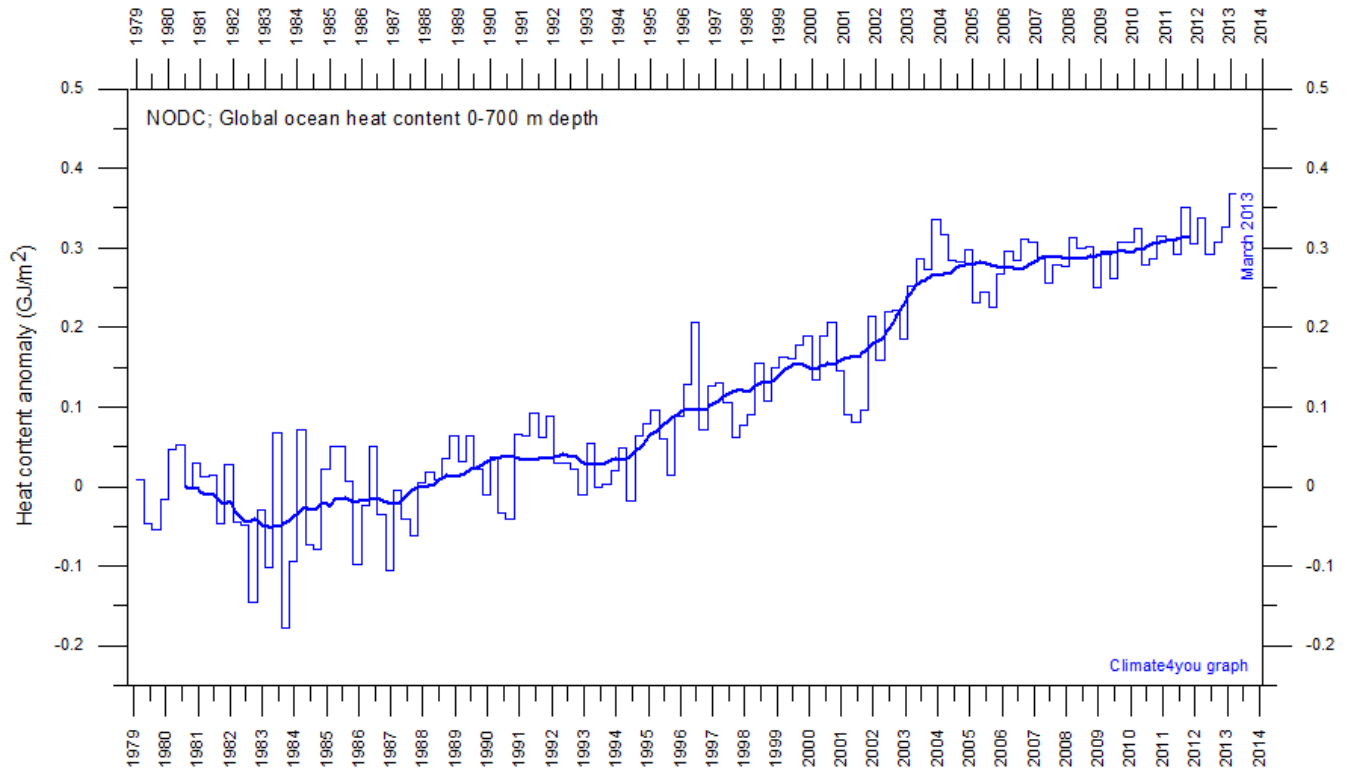


Global monthly average sea surface temperature since 1979 according to University of East Anglia's [Climatic Research Unit \(CRU\)](#), UK. Base period: 1961-1990. The thick line is the simple running 37 month average. Please note that this diagram is not updated beyond July 2013.

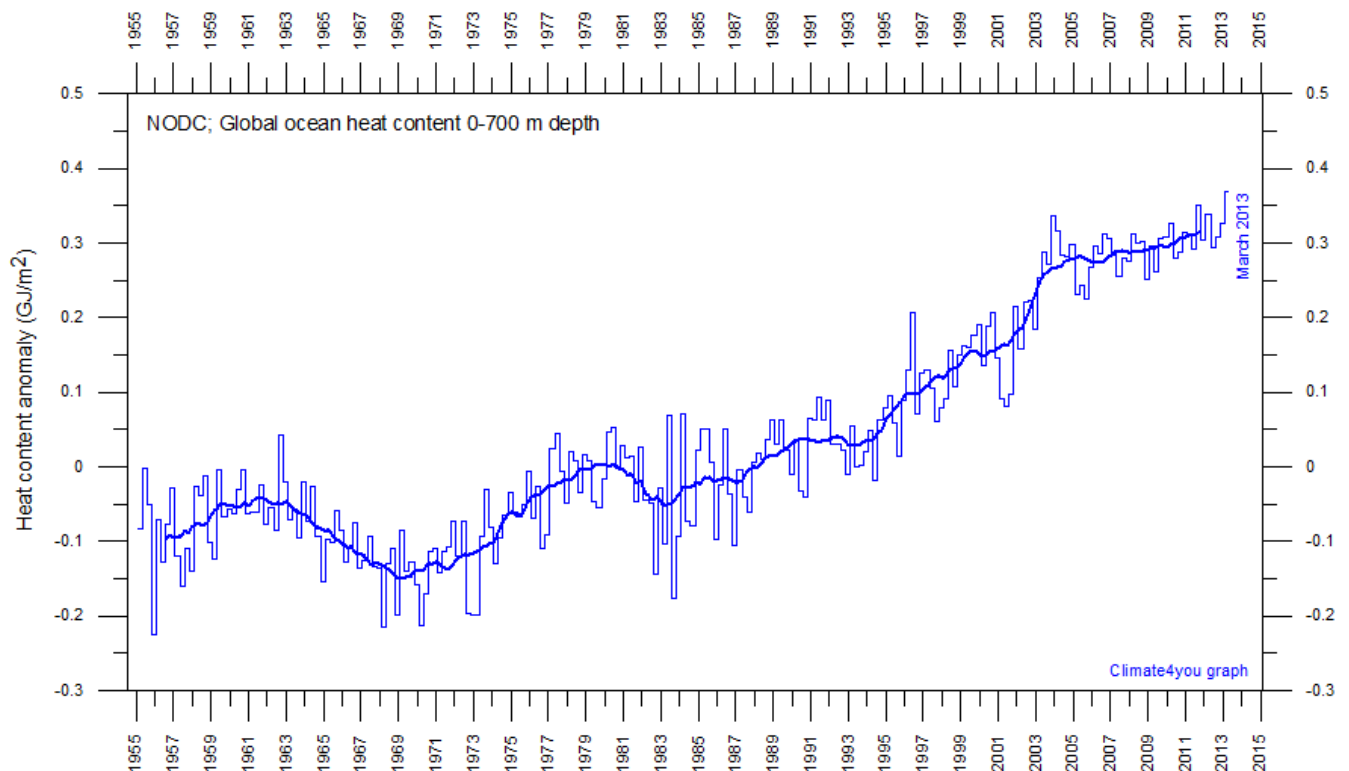


Global monthly average sea surface temperature since 1979 according to the [National Climatic Data Center](#) (NCDC), USA. Base period: 1901-2000. The thick line is the simple running 37 month average.

## Global ocean heat content uppermost 700 m, updated to March 2013

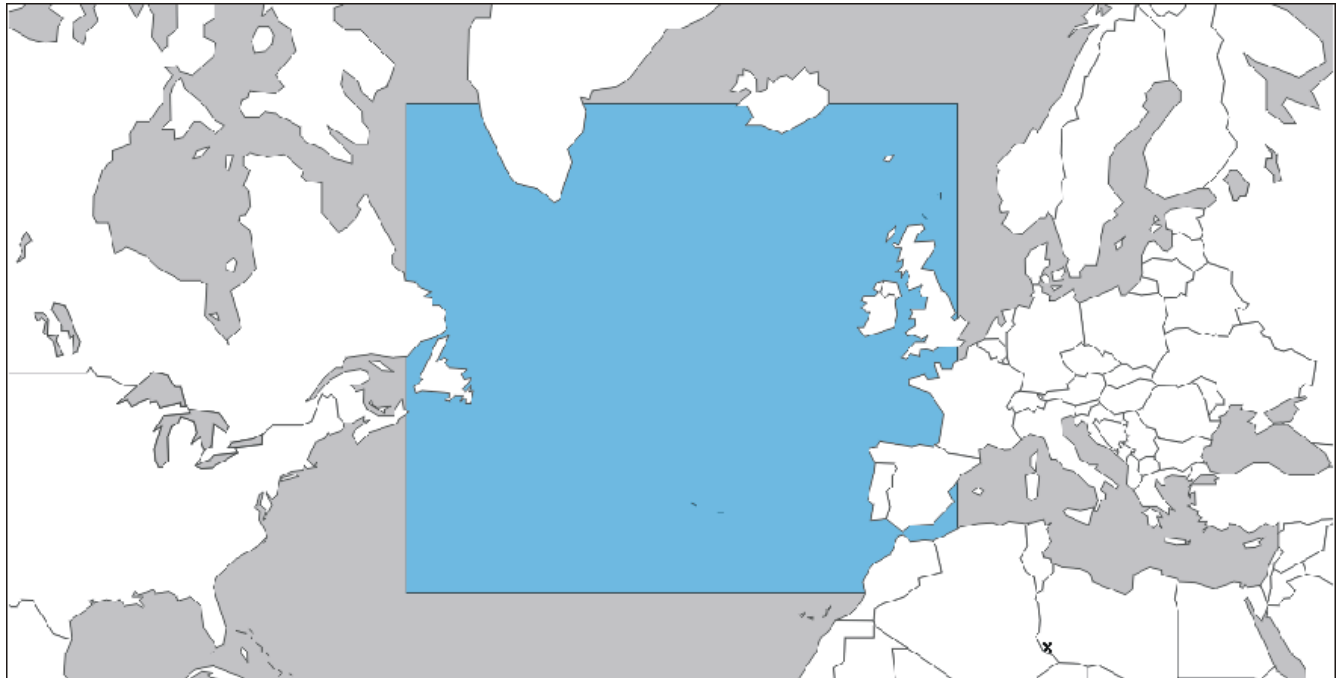


Global monthly heat content anomaly (GJ/m<sup>2</sup>) in the uppermost 700 m of the oceans since January 1979. Data source: National Oceanographic Data Center(NODC).

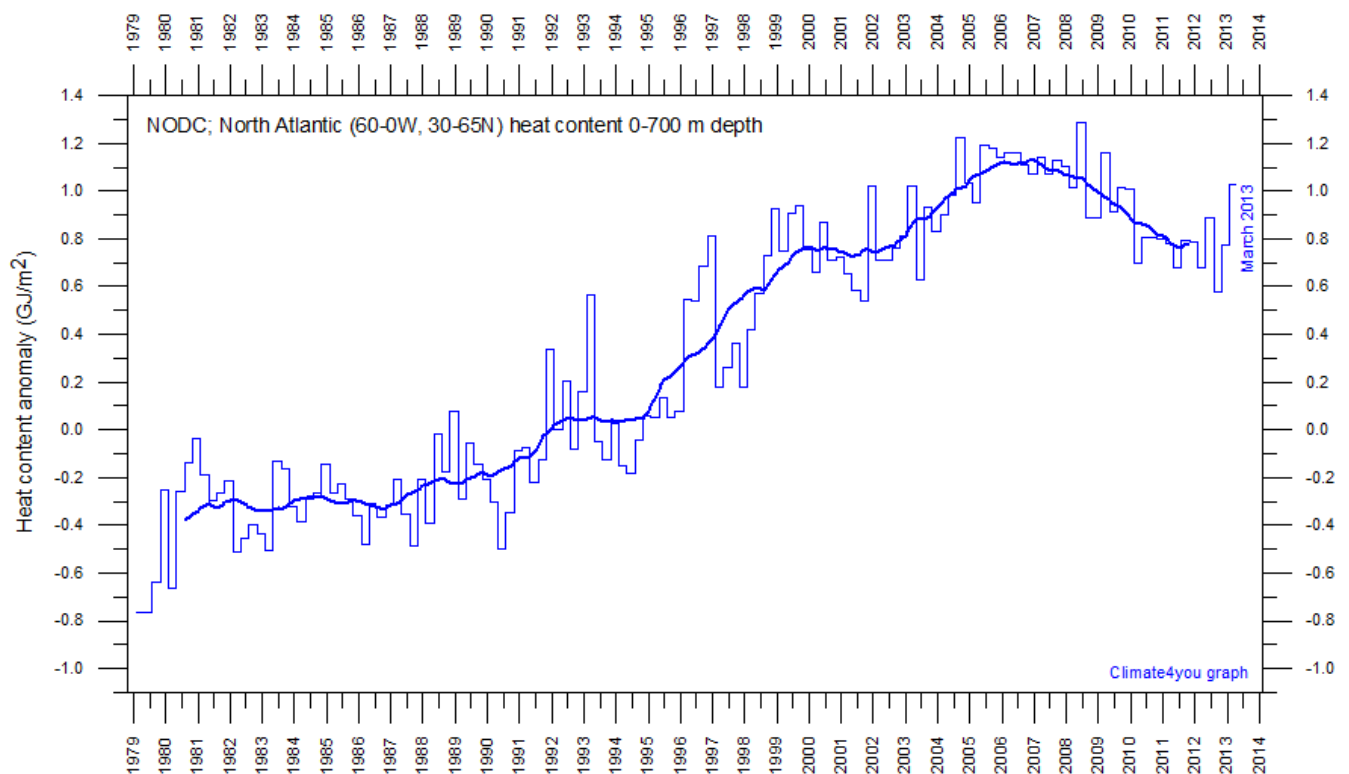


Global monthly heat content anomaly (GJ/m<sup>2</sup>) in the uppermost 700 m of the oceans since January 1955. Data source: National Oceanographic Data Center(NODC).

## North Atlantic heat content uppermost 700 m, updated to March 2012

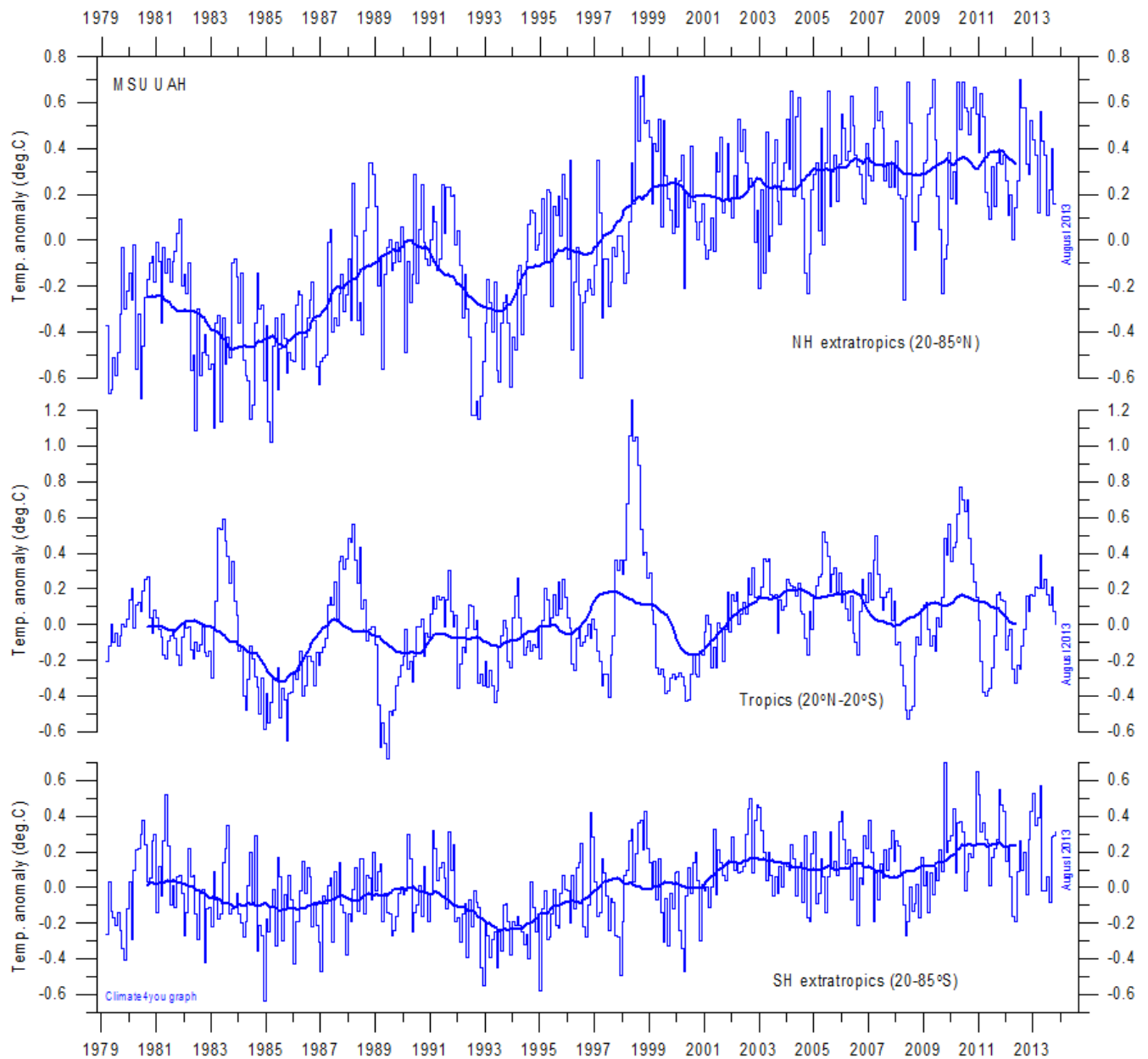


14



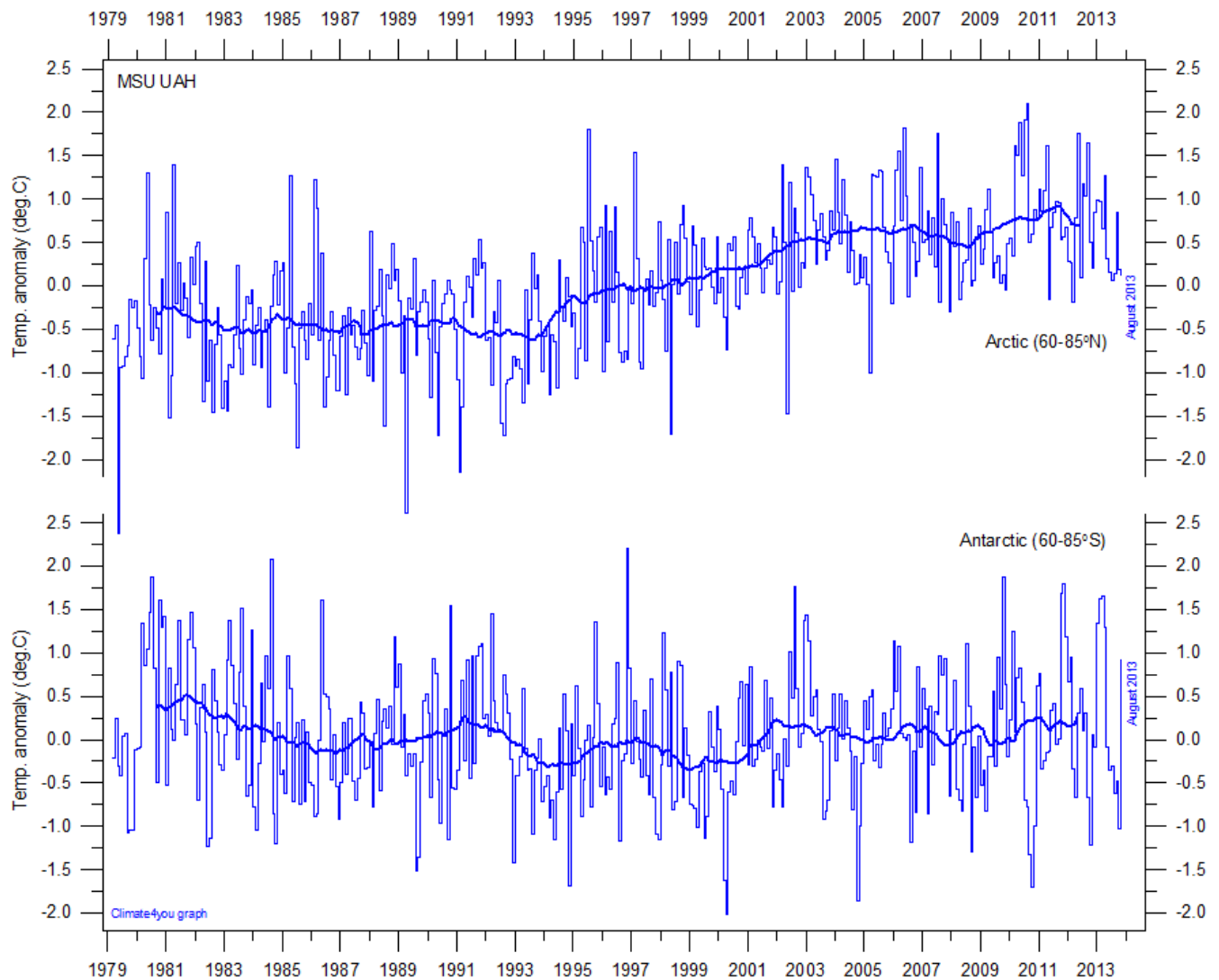
Global monthly heat content anomaly ( $\text{GJ/m}^2$ ) in the uppermost 700 m of the North Atlantic (60-0W, 30-65N; see map above) ocean since January 1979. The thin line indicates monthly values, and the thick line represents the simple running 37 month (c. 3 year) average. Data source: [National Oceanographic Data Center](http://www.nodc.noaa.gov) (NODC).

## Zonal lower troposphere temperatures from satellites, updated to August 2013



Global monthly average lower troposphere temperature since 1979 for the tropics and the northern and southern extratropics, according to [University of Alabama](#) at Huntsville, USA. Thin lines show the monthly temperature. Thick lines represent the simple running 37 month average, nearly corresponding to a running 3 yr average. Reference period 1981-2010.

## Arctic and Antarctic lower troposphere temperature, updated to August 2013



Global monthly average lower troposphere temperature since 1979 for the North Pole and South Pole regions, based on satellite observations ([University of Alabama](http://climate4you.com) at Huntsville, USA). Thin lines show the monthly temperature. The thick line is the simple running 37 month average, nearly corresponding to a running 3 yr average.

## Arctic and Antarctic surface air temperature, updated to July 2013

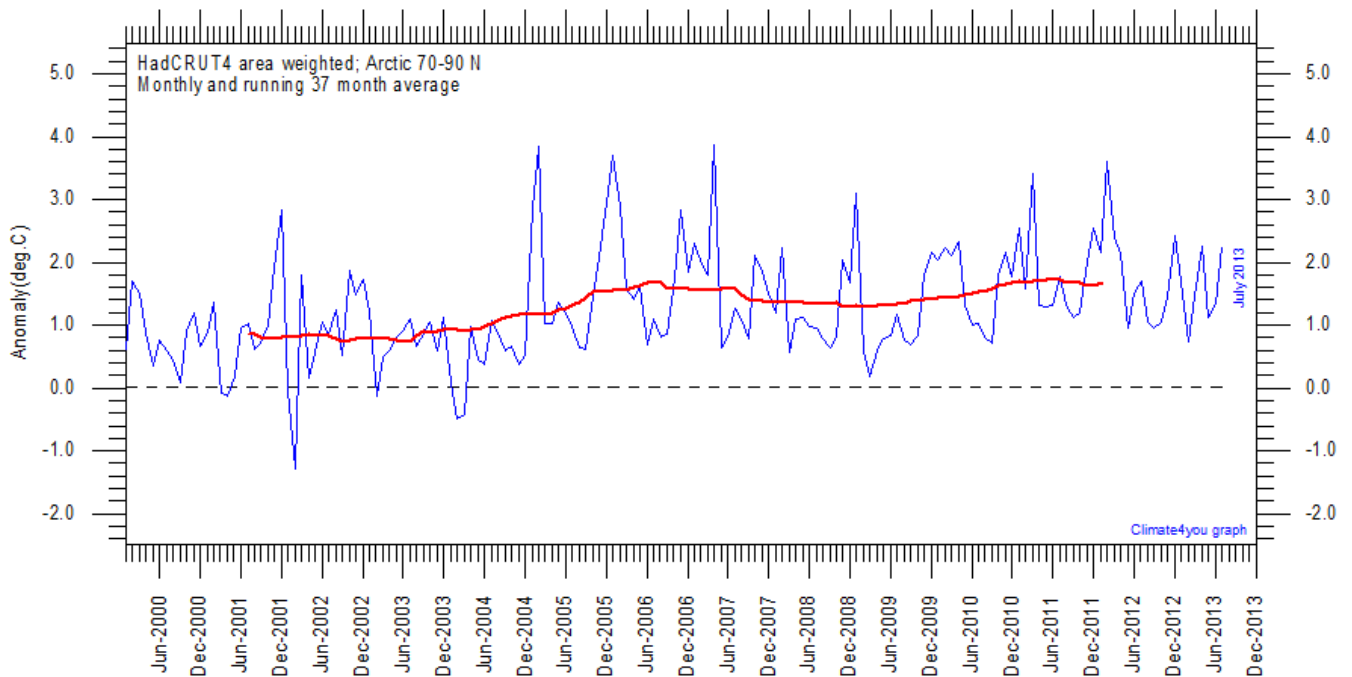


Diagram showing area weighted Arctic (70-90°N) monthly surface air temperature anomalies ([HadCRUT4](#)) since January 2000, in relation to the WMO [normal period](#) 1961-1990. The thin blue line shows the monthly temperature anomaly, while the thicker red line shows the running 37 month (c.3 yr) average.

17

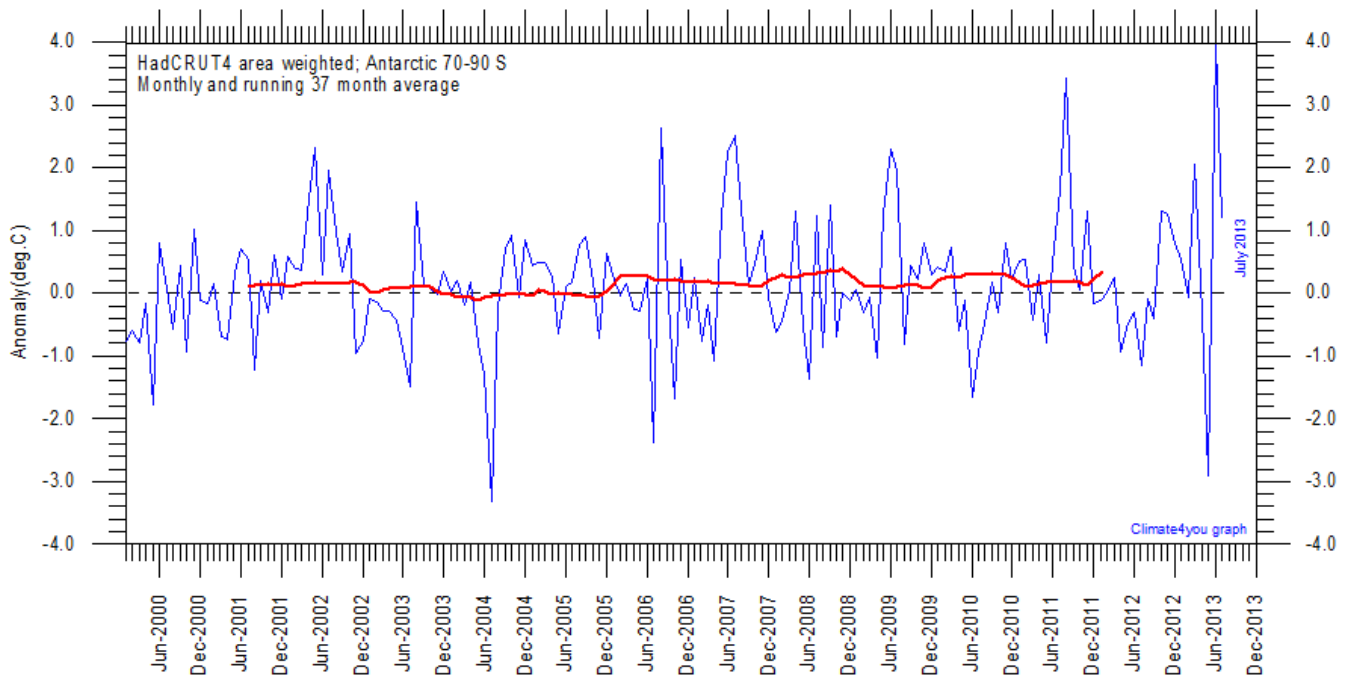


Diagram showing area weighted Antarctic (70-90°S) monthly surface air temperature anomalies ([HadCRUT4](#)) since January 2000, in relation to the WMO [normal period](#) 1961-1990. The thin blue line shows the monthly temperature anomaly, while the thicker red line shows the running 37 month (c.3 yr) average.

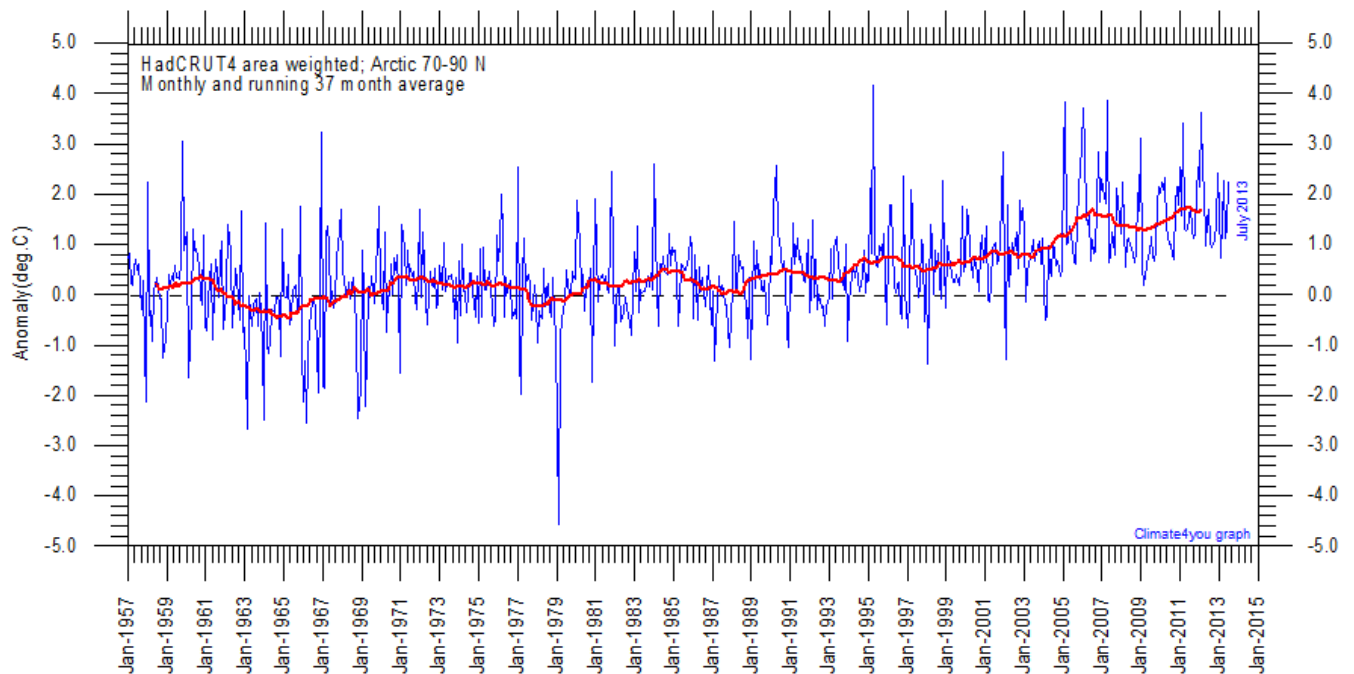


Diagram showing area weighted Arctic (70-90°N) monthly surface air temperature anomalies ([HadCRUT4](#)) since January 1957, in relation to the WMO [normal period](#) 1961-1990. The thin blue line shows the monthly temperature anomaly, while the thicker red line shows the running 37 month (c.3 yr) average.

18

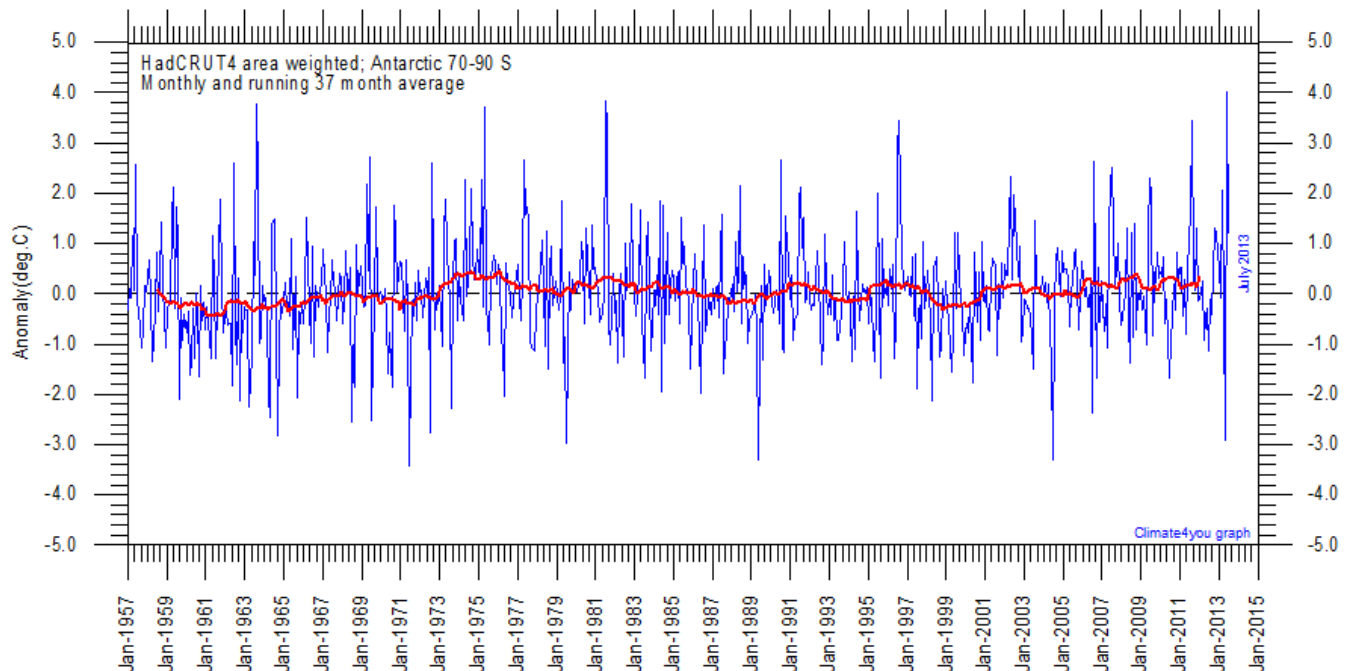


Diagram showing area weighted Antarctic (70-90°S) monthly surface air temperature anomalies ([HadCRUT4](#)) since January 1957, in relation to the WMO [normal period](#) 1961-1990. The thin blue line shows the monthly temperature anomaly, while the thicker red line shows the running 37 month (c.3 yr) average.

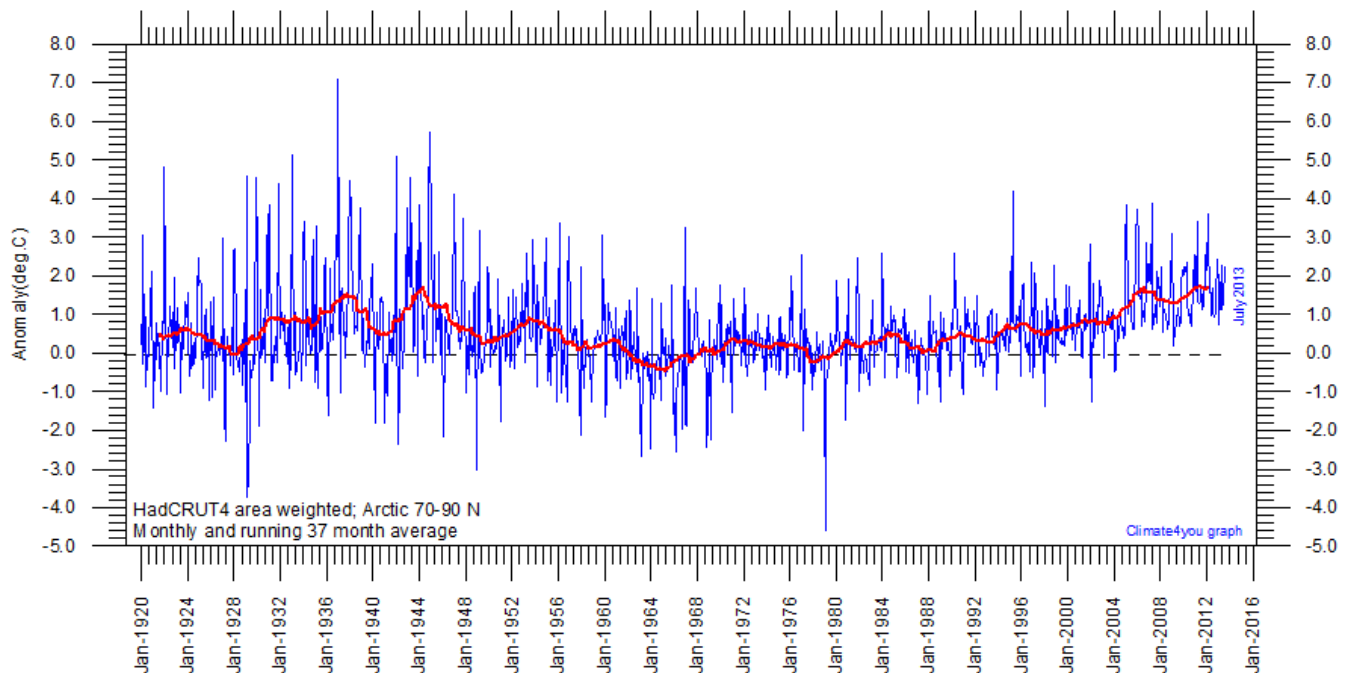


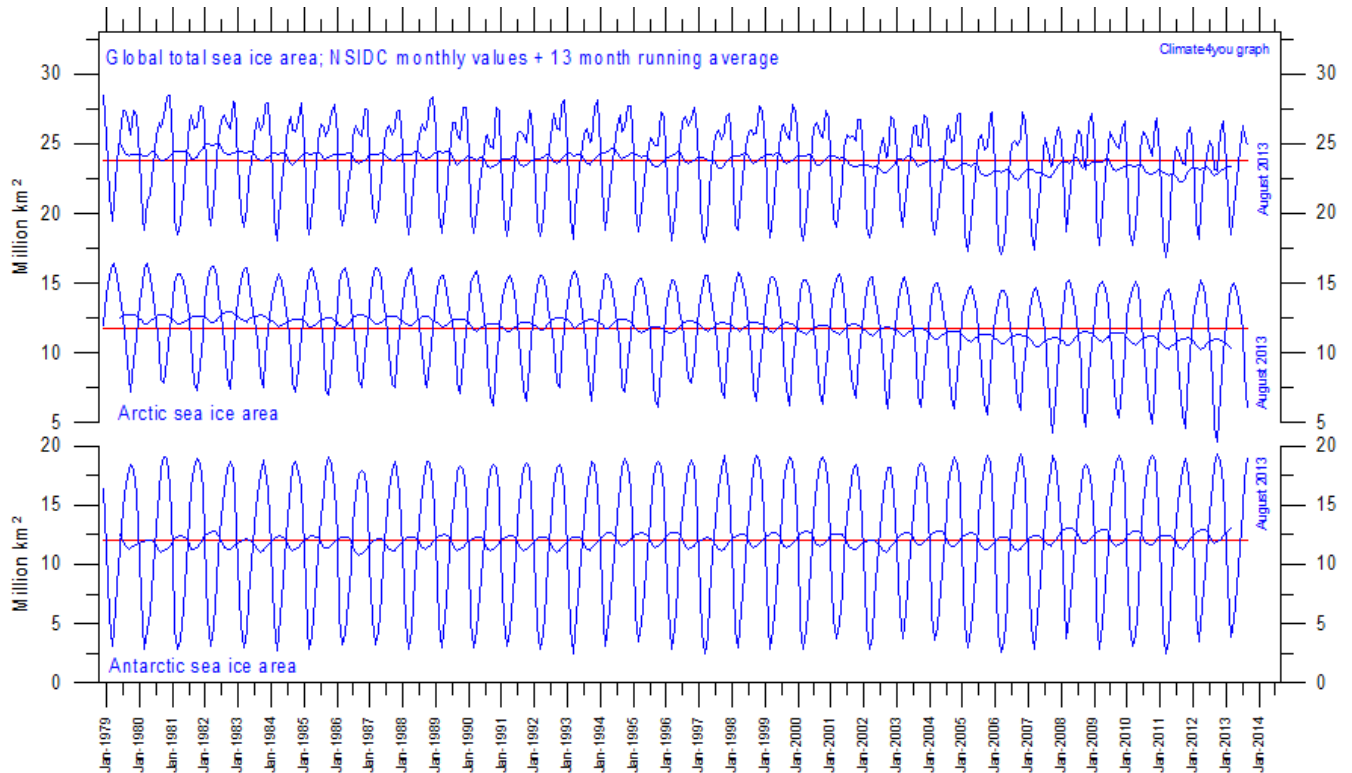
Diagram showing area weighted Arctic (70-90°N) monthly surface air temperature anomalies ([HadCRUT4](#)) since January 1920, in relation to the WMO [normal period](#) 1961-1990. The thin blue line shows the monthly temperature anomaly, while the thicker red line shows the running 37 month (c.3 yr) average. Because of the relatively small number of Arctic stations before 1930, month-to-month variations in the early part of the temperature record are larger than later. The period from about 1930 saw the establishment of many new Arctic meteorological stations, first [in Russia and Siberia](#), and following the 2nd World War, also in North America. The period since 2000 is warm, about as warm as the period 1930-1940.

As the HadCRUT4 data series has improved high latitude coverage data coverage (compared to the HadCRUT3 series) the individual 5°x5° grid cells has been weighted according to their surface area. This is in contrast to [Gillett et al. 2008](#) which calculated a simple average, with no consideration to the surface area represented by the individual 5°x5° grid cells.

#### Literature:

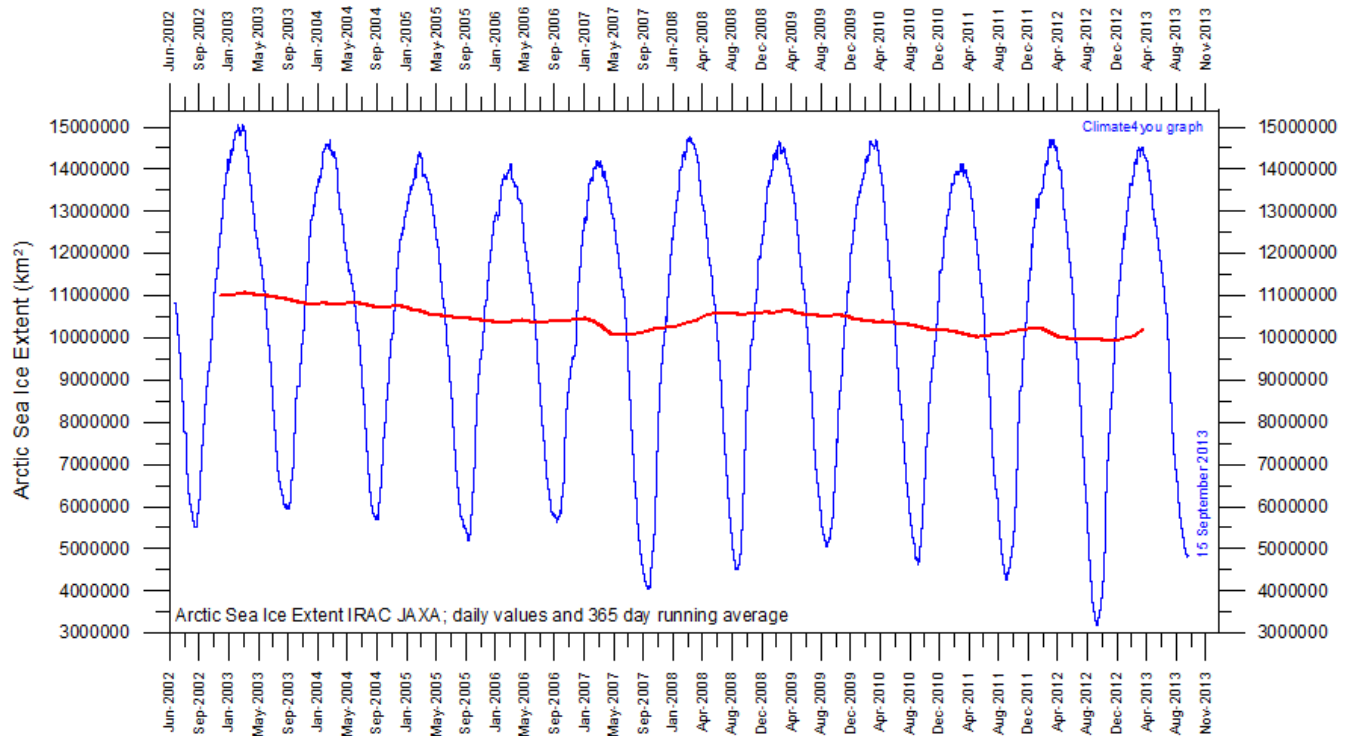
Gillett, N.P., Stone, D.A., Stott, P.A., Nozawa, T., Karpechko, A.Y.U., Hegerl, G.C., Wehner, M.F. and Jones, P.D. 2008. Attribution of polar warming to human influence. *Nature Geoscience* 1, 750-754.

## Arctic and Antarctic sea ice, updated to August 2013



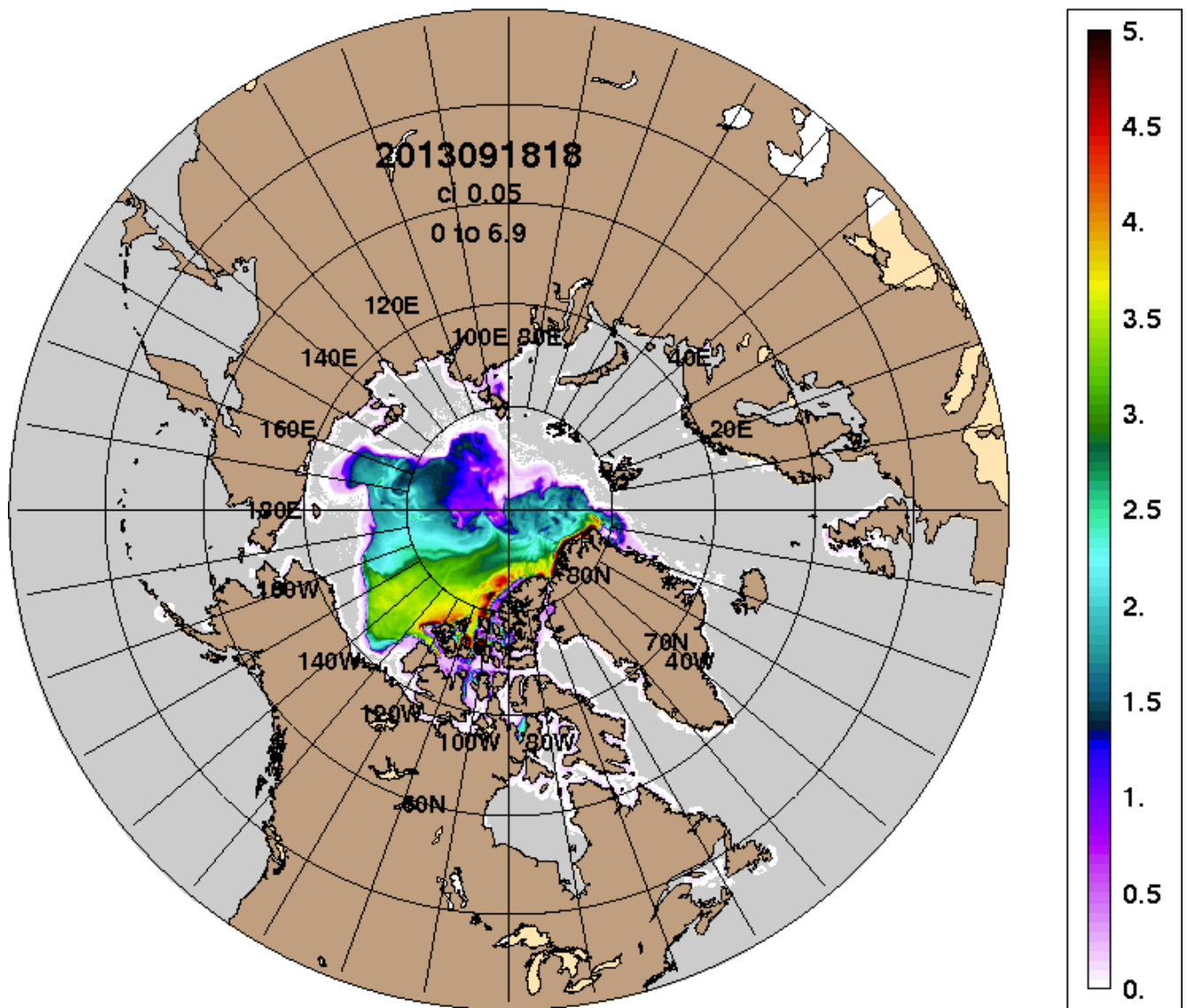
Graphs showing monthly Antarctic, Arctic and global sea ice extent since November 1978, according to the [National Snow and Ice data Center \(NSIDC\)](#).

20



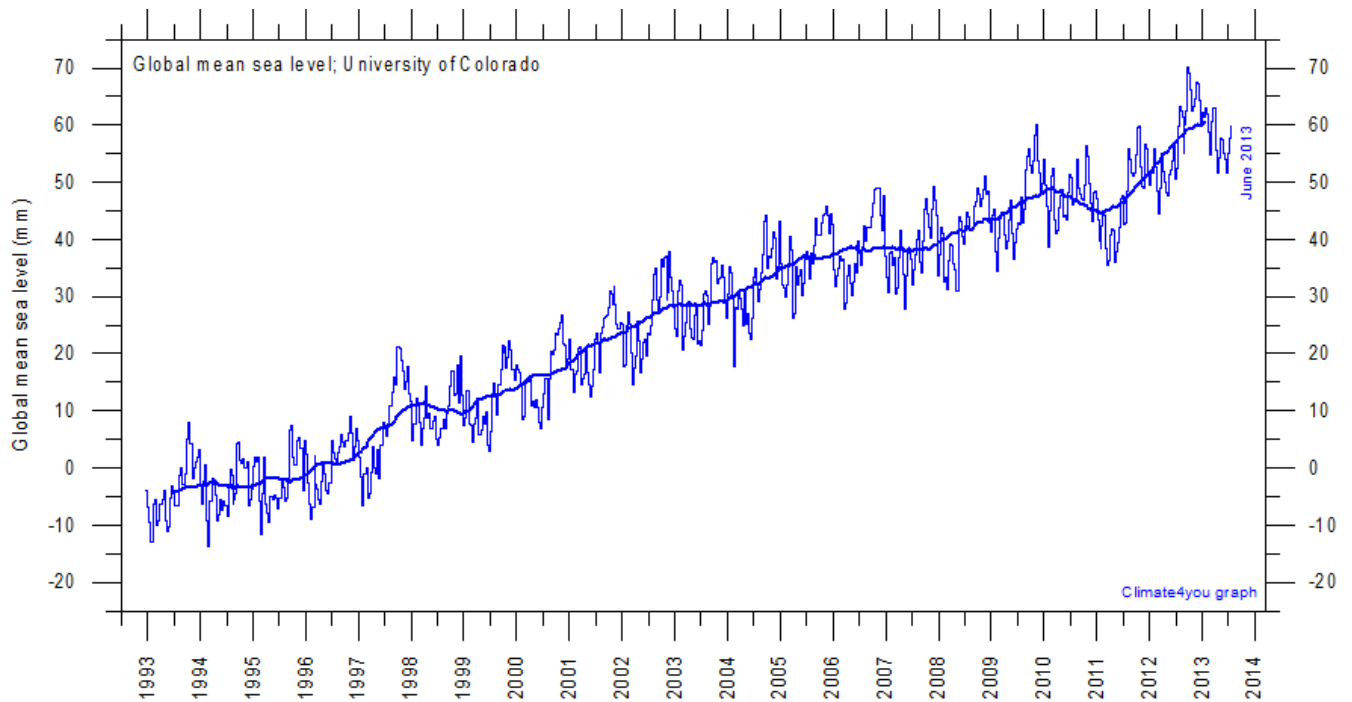
Graph showing daily Arctic sea ice extent since June 2002, to 15 September 2013, by courtesy of [Japan Aerospace Exploration Agency \(JAXA\)](#).

## ARCC0.08-03.7 Ice Thickness (m): 20130919



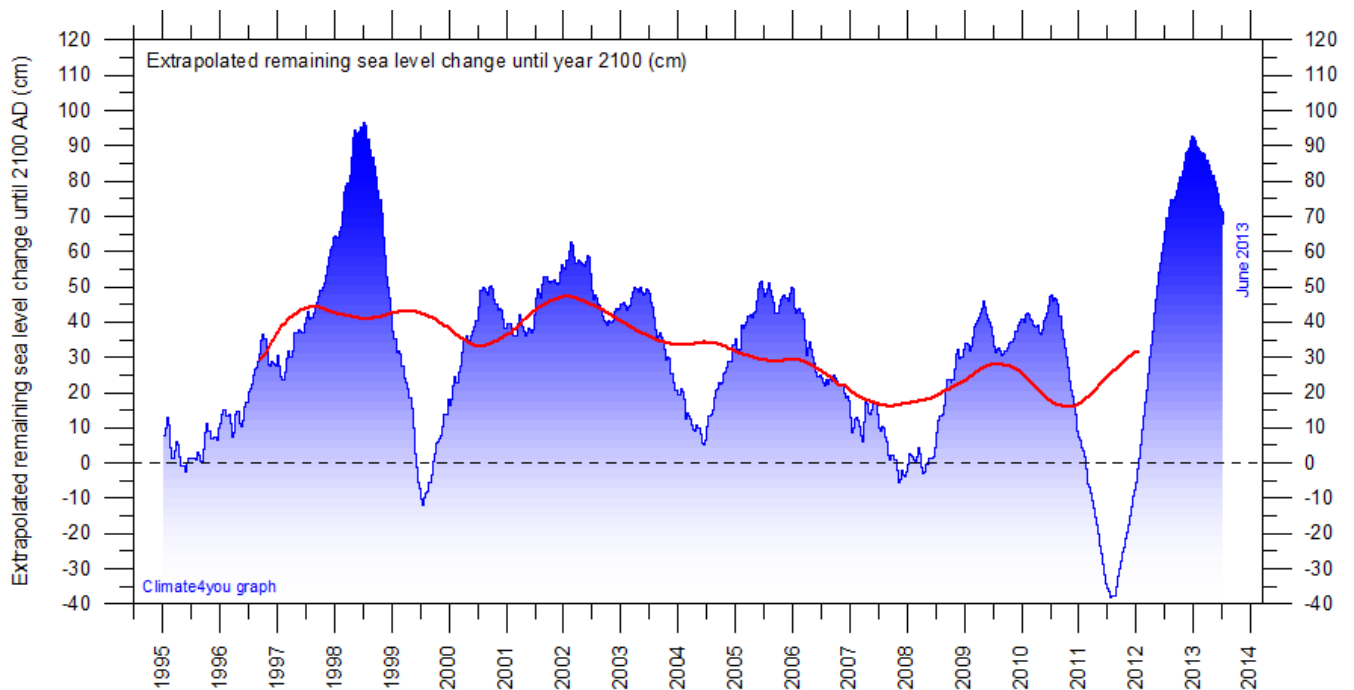
Northern hemisphere sea ice extension and thickness on 19 September 2013 according to the [Arctic Cap Nowcast/Forecast System](#) (ACNFS), US Naval Research Laboratory. Thickness scale (m) is shown to the right.

## Global sea level, updated to June 2013



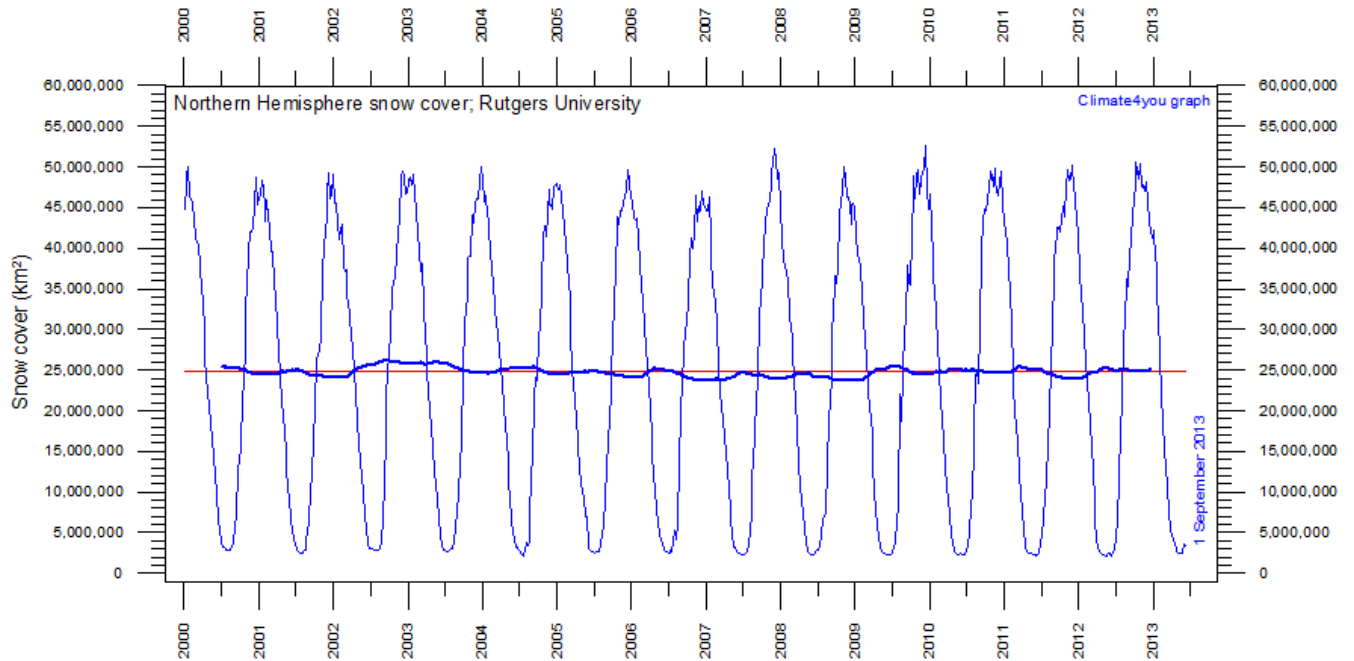
Global monthly sea level since late 1992 according to the Colorado Center for Astrodynamics Research at [University of Colorado at Boulder](http://www.ccar.colorado.edu/), USA. The thick line is the simple running 37 observation average, nearly corresponding to a running 3 yr average.

22



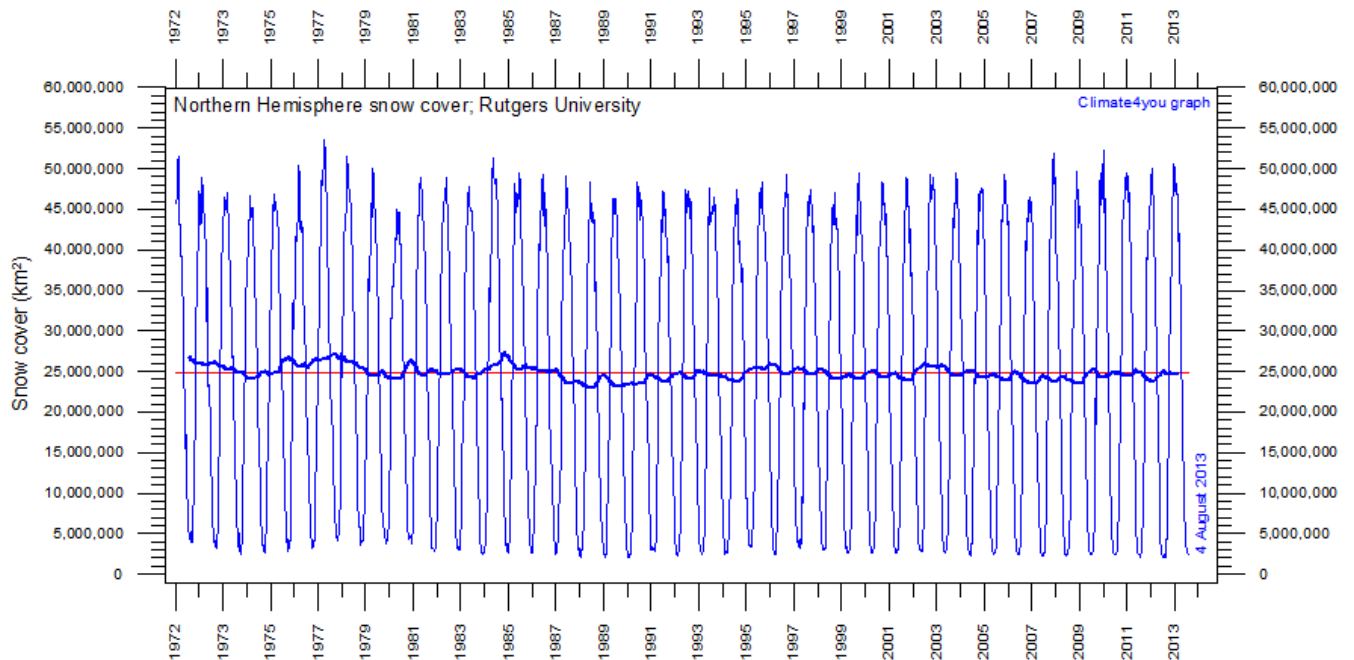
Forecasted change of global sea level until year 2100, based on simple extrapolation of measurements done by the Colorado Center for Astrodynamics Research at [University of Colorado at Boulder](http://www.ccar.colorado.edu/), USA. The thick line is the simple running 3 yr average forecast for sea level change until year 2100. Based on this (thick line), the present simple empirical forecast of sea level change until 2100 is about +31 cm.

## Northern Hemisphere weekly snow cover, updated to early September 2013



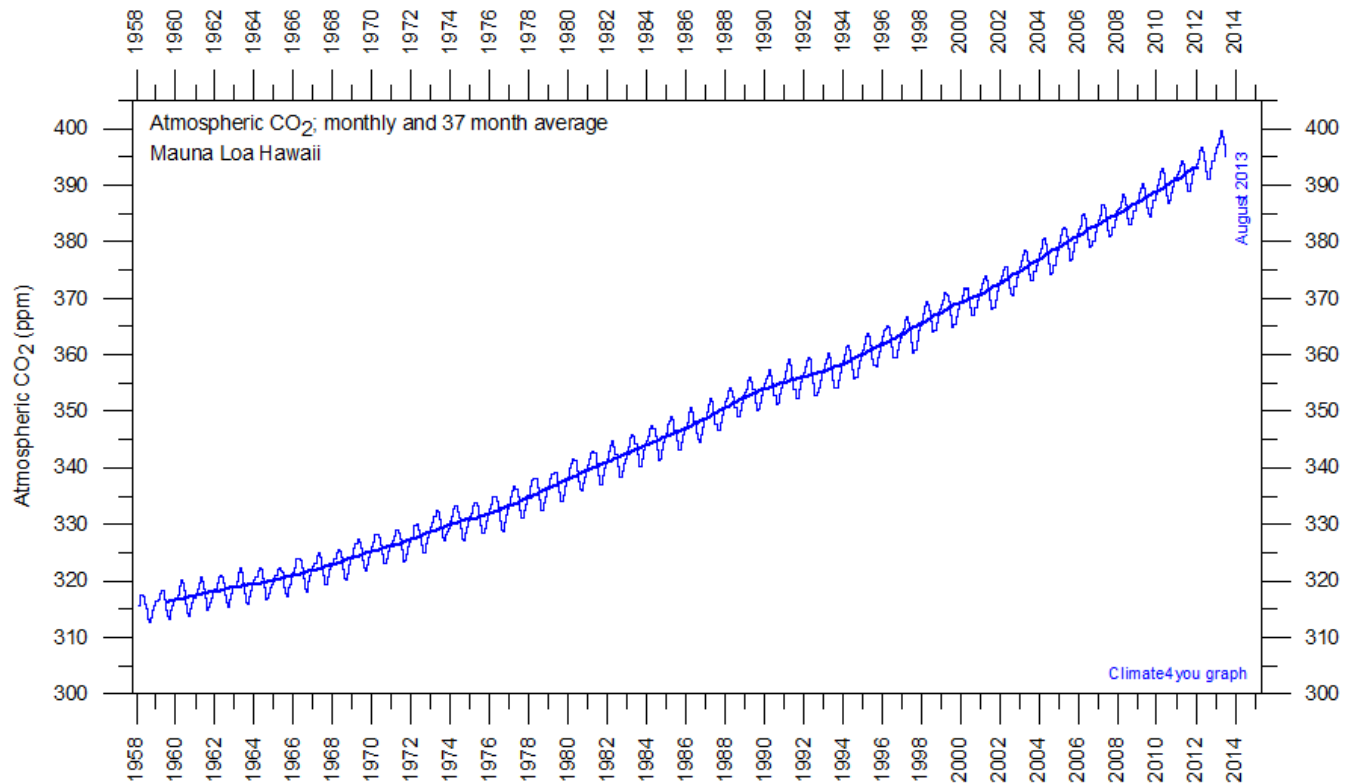
Northern hemisphere weekly snow cover since January 2000 according to Rutgers University Global Snow Laboratory. The thin blue line is the weekly data, and the thick blue line is the running 53 week average (approximately 1 year). The horizontal red line is the 1972-2012 average.

23

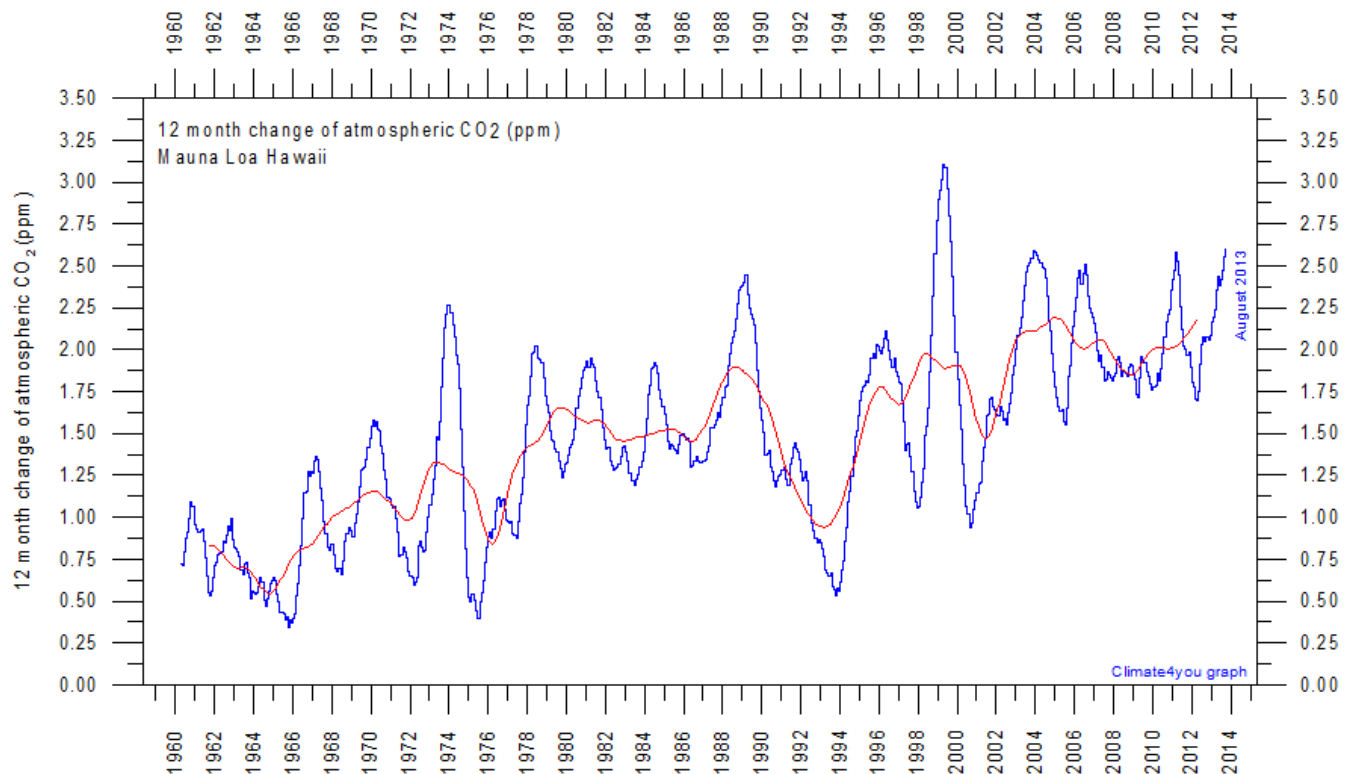


Northern hemisphere weekly snow cover since January 1972 according to Rutgers University Global Snow Laboratory. The thin blue line is the weekly data, and the thick blue line is the running 53 week average (approximately 1 year). The horizontal red line is the 1972-2012 average.

## Atmospheric CO<sub>2</sub>, updated to August 2013

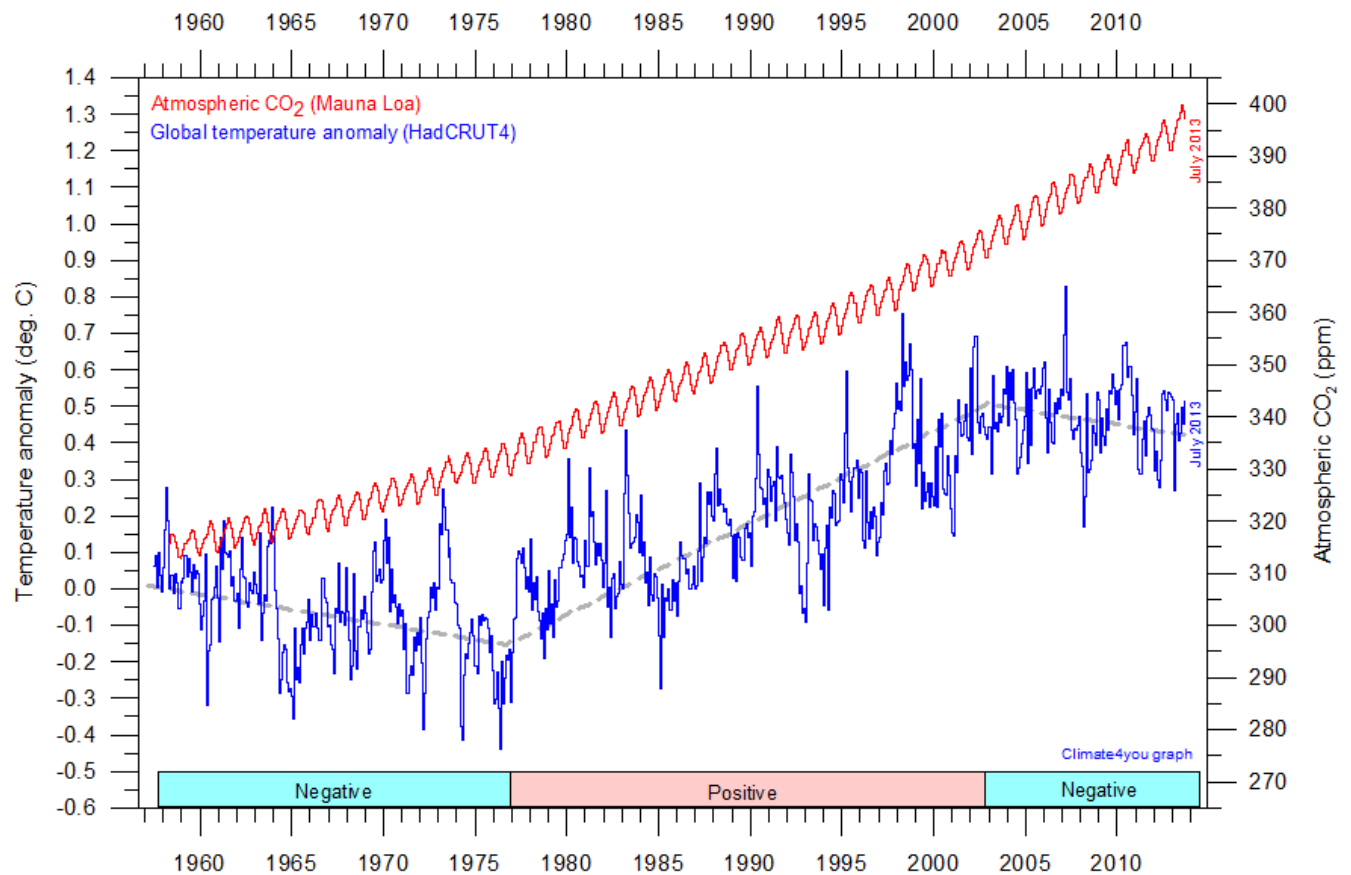


24

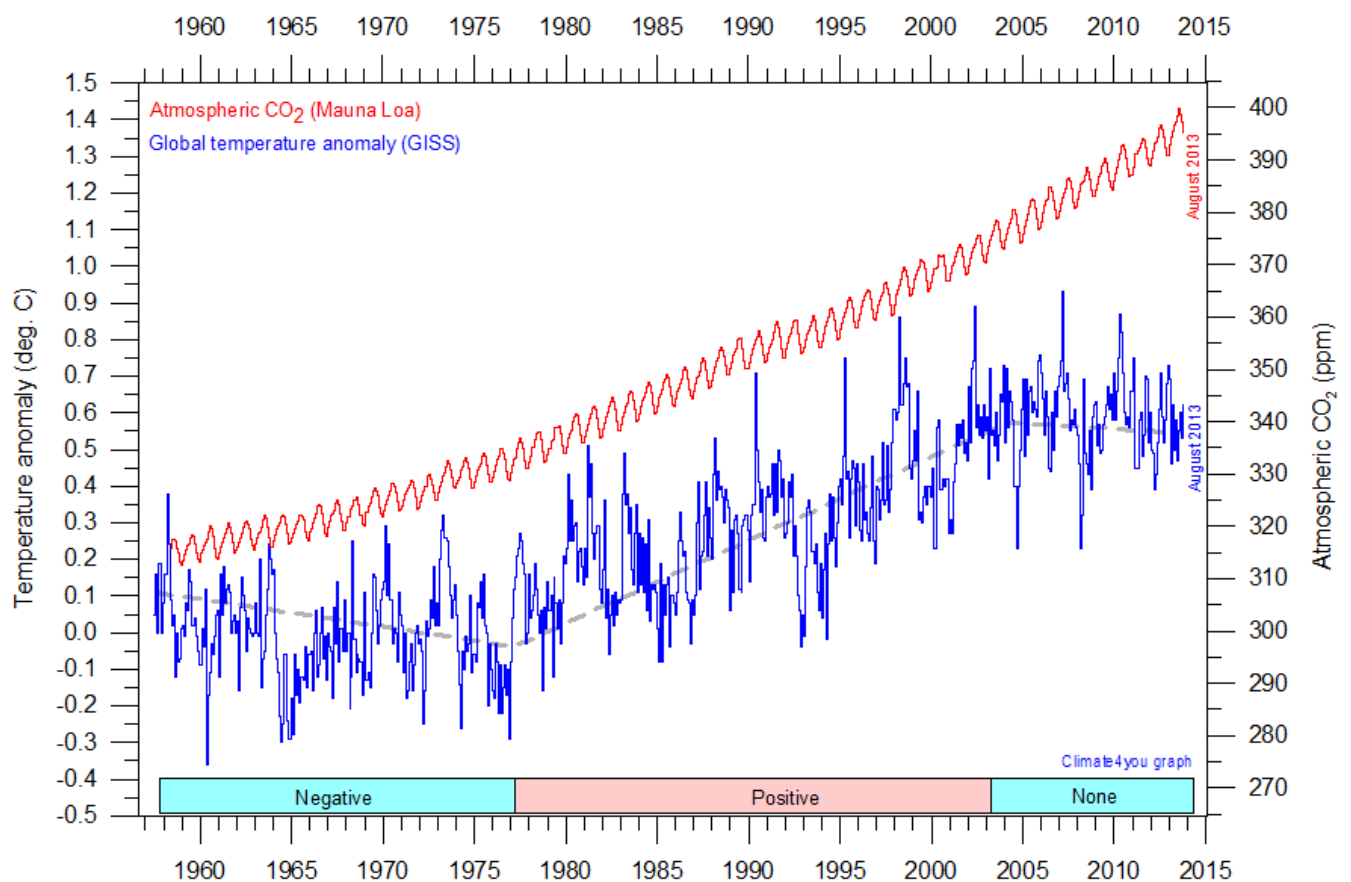


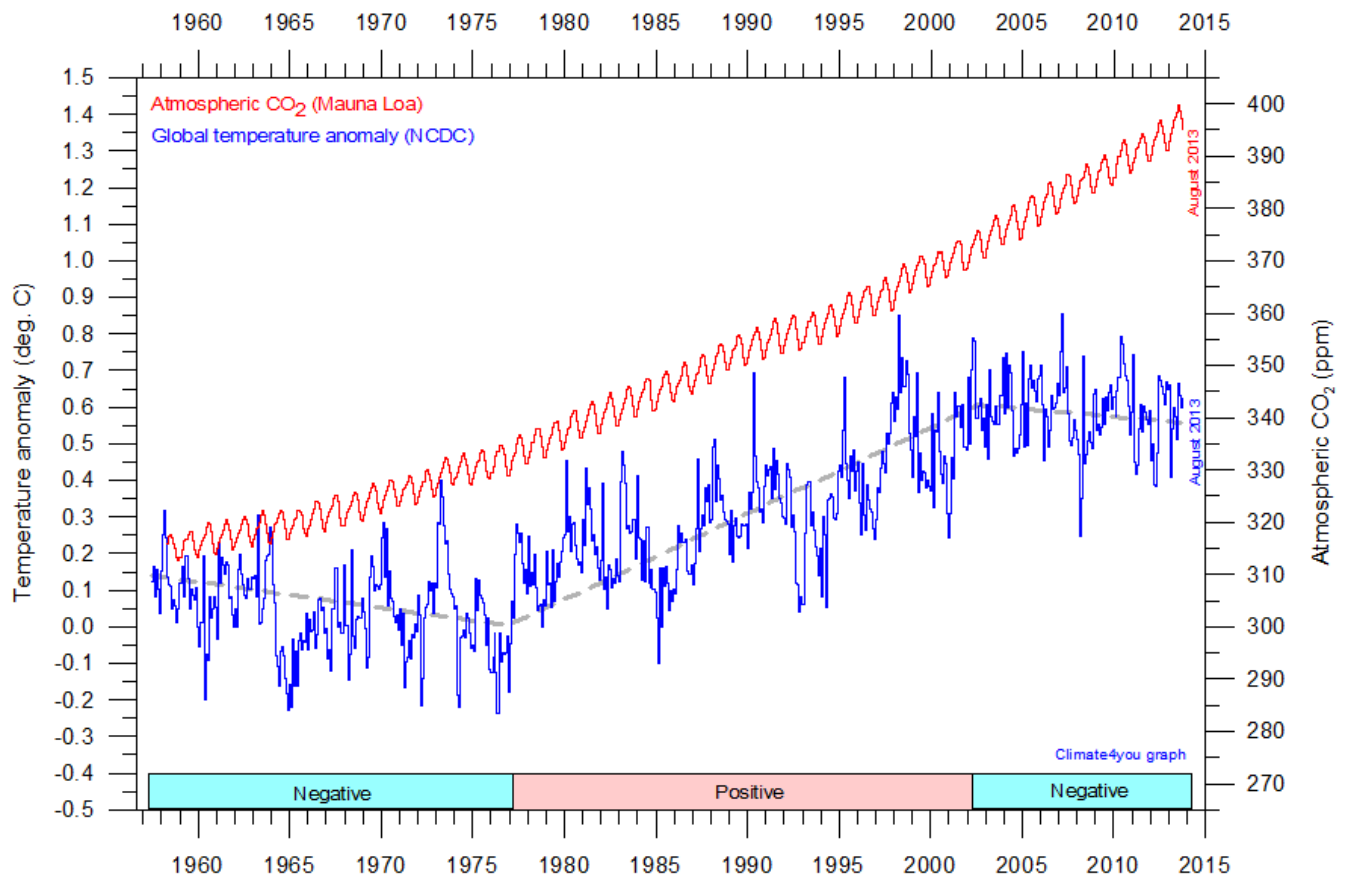
Monthly amount of atmospheric CO<sub>2</sub> (upper diagram) and annual growth rate (lower diagram); average last 12 months minus average preceding 12 months, blue line) of atmospheric CO<sub>2</sub> since 1959, according to data provided by the [Mauna Loa Observatory](#), Hawaii, USA. The red line is the simple running 37 observation average, nearly corresponding to a running 3 yr average.

## Global surface air temperature and atmospheric CO<sub>2</sub>, updated to August 2013



25





Diagrams showing HadCRUT3, GISS, and NCDC monthly global surface air temperature estimates (blue) and the monthly atmospheric CO<sub>2</sub> content (red) according to the [Mauna Loa Observatory](#), Hawaii. The Mauna Loa data series begins in March 1958, and 1958 has therefore been chosen as starting year for the diagrams. Reconstructions of past atmospheric CO<sub>2</sub> concentrations (before 1958) are not incorporated in this diagram, as such past CO<sub>2</sub> values are derived by other means (ice cores, stomata, or older measurements using different methodology), and therefore are not directly comparable with direct atmospheric measurements. The dotted grey line indicates the approximate linear temperature trend, and the boxes in the lower part of the diagram indicate the relation between atmospheric CO<sub>2</sub> and global surface air temperature, negative or positive. Please note that the HadCRUT4 and the NCDC diagrams have not been updated beyond July 2013.

Most climate models assume the greenhouse gas carbon dioxide CO<sub>2</sub> to influence significantly upon global temperature. It is therefore relevant to compare different temperature records with measurements of atmospheric CO<sub>2</sub>, as shown in the diagrams above. Any comparison, however, should not be made on a monthly or annual basis, but for a longer time period, as other effects (oceanographic, etc.) may well override the potential influence of CO<sub>2</sub> on short time scales such as just a few years. It is of course equally inappropriate to present new meteorological record values, whether daily, monthly or annual, as support for the hypothesis ascribing high

importance of atmospheric CO<sub>2</sub> for global temperatures. Any such short-period meteorological record value may well be the result of other phenomena.

What exactly defines the critical length of a relevant time period to consider for evaluating the alleged importance of CO<sub>2</sub> remains elusive, and is still a topic for discussion. However, the critical period length must be inversely proportional to the temperature sensitivity of CO<sub>2</sub>, including feedback effects. If the net temperature effect of atmospheric CO<sub>2</sub> is strong, the critical time period will be short, and vice versa.

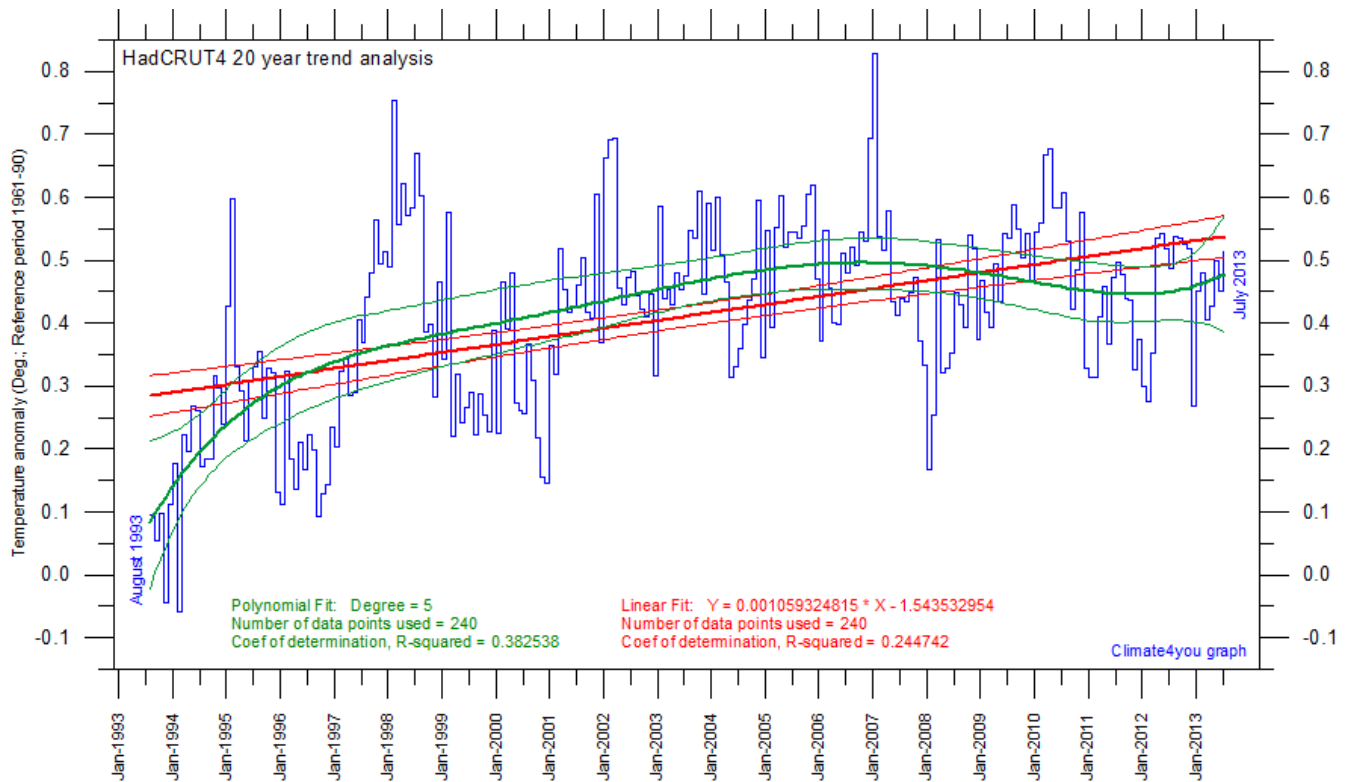
However, past climate research history provides some clues as to what has traditionally been considered the relevant length of period over which to compare temperature and atmospheric CO<sub>2</sub>. After about 10 years of concurrent global temperature- and CO<sub>2</sub>-increase, IPCC was established in 1988. For obtaining public and political support for the CO<sub>2</sub>-hypothesis the 10 year warming period leading up to 1988 in all likelihood was important. Had the global temperature instead been decreasing, political support for the hypothesis would have been difficult to obtain.

Based on the previous 10 years of concurrent temperature- and CO<sub>2</sub>-increase, many climate

scientists in 1988 presumably felt that their understanding of climate dynamics was sufficient to conclude about the importance of CO<sub>2</sub> for global temperature changes. From this it may safely be concluded that 10 years was considered a period long enough to demonstrate the effect of increasing atmospheric CO<sub>2</sub> on global temperatures.

Adopting this approach as to critical time length (at least 10 years), the varying relation (positive or negative) between global temperature and atmospheric CO<sub>2</sub> has been indicated in the lower panels of the diagrams above.

## Last 20 year monthly surface air temperature changes, updated to July 2012



28

Last 20 years global monthly average surface air temperature according to Hadley CRUT, a cooperative effort between the [Hadley Centre for Climate Prediction and Research](#) and the [University of East Anglia's Climatic Research Unit \(CRU\)](#), UK. The thin blue line represents the monthly values. The thick red line is the linear fit, with 95% confidence intervals indicated by the two thin red lines. The thick green line represents a 5-degree polynomial fit, with 95% confidence intervals indicated by the two thin green lines. A few key statistics is given in the lower part of the diagram (note that the linear trend is the monthly trend).

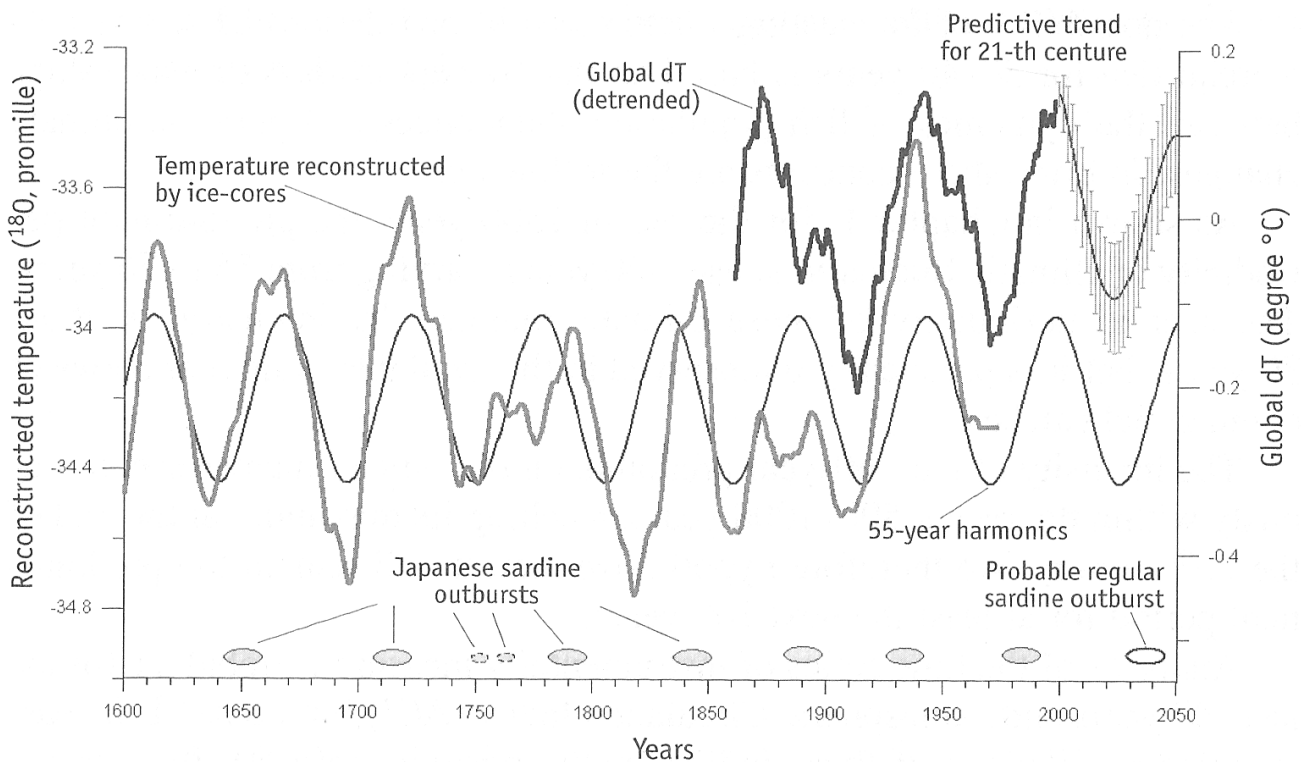
It is quite often debated if the global surface temperature still increases, or if the temperature has levelled out during the last 10-15 years. The above diagram may be useful in this context, and demonstrates the differences between two often

used statistical approaches to determine recent temperature trends. Please also note that such fits only attempt to describe the past, and usually have limited predictive power.

## Year 1600-2000: Cyclic temperature variations and Japanese sardine outbursts

Sardines reach sexual maturity quickly and spawn several times a year. Since they quickly replenish their numbers, they are considered very resilient to fishing pressure. Sardines swim in large schools and are related to shads, herrings and menhadens.

Much of the world's sardine catch is used for baitfish, fishmeal and fish oil, although some is canned or sold fresh. Most populations appear to be healthy. [Japanese sardines](#) are low in their content of Mercury, but high in Omega-3s.



**Figure 1.** Cyclic temperature variations and Japanese sardine outbursts (ellipses in lower part of diagram) during the last 400 years. Data is based on historical Japanese chronicles for the period 1640-1880, and fishery catch statistics 1920-2000. The empty ellipse in the lower right corner shows the probable period of the next large sardine outburst. The grey line shows temperature according to Greenland ice cores; the black bold line shows the detrended global temperature, and the thin black line in continuation represents the forecast for the 21th century. The thin black line in the central part of the diagram shows a 55 year harmonic variation. Source: Klyashtorin and Lyubushin 2007.

In a book entitled 'Cyclic Climate Changes and Fish Productivity' (published 2007), Klyashtorin and Lyubushin established the possibility of forecasting

fluctuations in populations of a number of commercial fish species, including Japanese sardines, for at least 30-40 years, based on an

observed empirical relationship between the dynamics of these fish populations and recurrent, periodic climatic changes.

In Japan the variations of the sardine population is known for about 400 years, based on historical chronicles for the period 1640-1880, and official fishery catch statistics 1920-2000 (Kawasaki 1994). During these 400 years outbursts of sardines has occurred with a period of about 55 years, generally in concert with climate variations (Fig. 1).

Klyashtorin and Lyubushin (2007) found for the last 1500 years a predominant climatic period of about 60 years, varying from 55 to 76 years. In addition to this, they identified a second important climatic periodic variation of about 30 years, although this was not of equal importance for the size of fish populations as the about 60 year period.

The about 60 year period was found to increase in magnitude during the last 500-1000 years, until reaching a maximum in the late 20<sup>th</sup> century. According to Klyashtorin and Lyubushin (2007), it

will therefore remain important for at least the next 100 years also.

In addition to the sardine data, Klyashtorin and Lyubushin (2007) also investigated 140 and 110 year time series for global average air temperature and Atmospheric Circulation Index (ACI), respectively, and found oscillations with 50-70 year period length.

By comparing the data series, Klyashtorin and Lyubushin (2007) found the Japanese sardine population to grow rapidly during periods of global temperature increase, and to fall off rapidly when the global temperature maxima are approached.

According to this analysis Klyashtorin and Lyubushin (2007) suggested that the Japanese sardine population will decrease until 2010-20, and then again begin to increase. The next Japanese sardine maxima (outburst) is forecasted to take place between 2030 and 2045, based on the observed climatic periodicity (Fig. 1).

#### References:

Kawasaki, T. 1994. A decade of the regime shift of small pelagies. FAO expert consultation (1983) to the PICES III (1994). *Bull. Jap. Soc. Fish. Oceanogr.*, Vol. 58, p. 321-333.

Klyashtorin, L.B. and Lyubushin, A.A. 2007. *Cyclic Climate Changes and Fish Productivity*. Government of the Russian Federation, State Committee for Fisheries of the Russian Federation. Moscow, VNIRO Publishing, 223 pp. ISBN 978-5-85382-339-6.

\*\*\*\*\*

All the above diagrams with supplementary information, including links to data sources and previous issues of this newsletter, are available on [www.climate4you.com](http://www.climate4you.com)

Yours sincerely,

Ole Humlum (Ole.Humlum@geo.uio.no)

September 20, 2013.