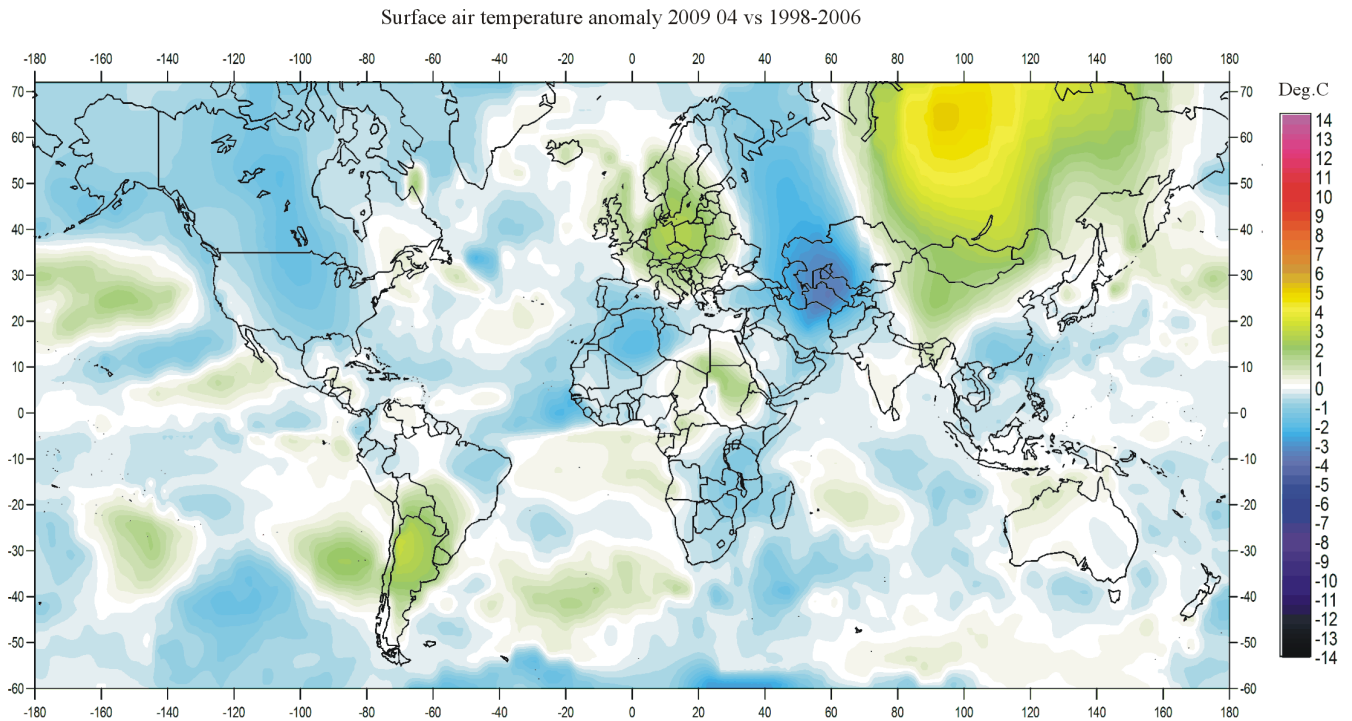


Climate4you update April 2009

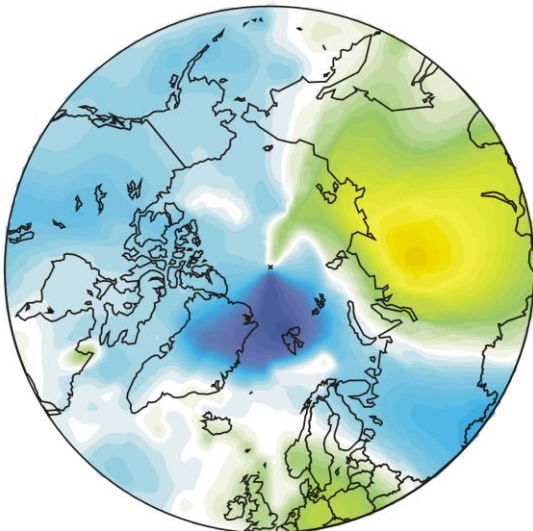
www.climate4you.com

April 2009 global surface air temperature overview

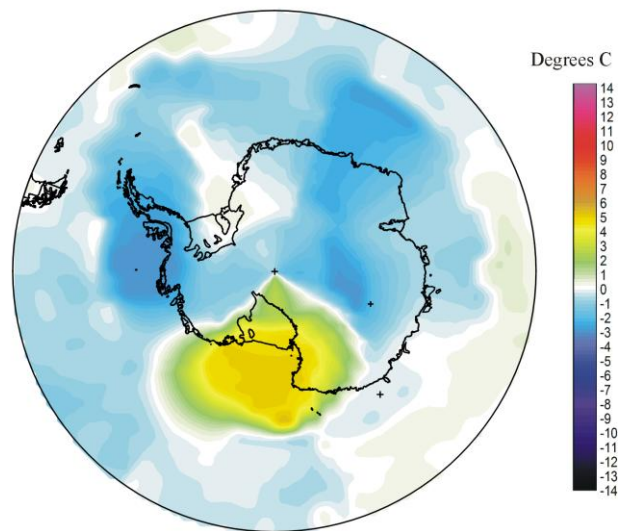


1

Air temperature 200904 versus average 1998-2006

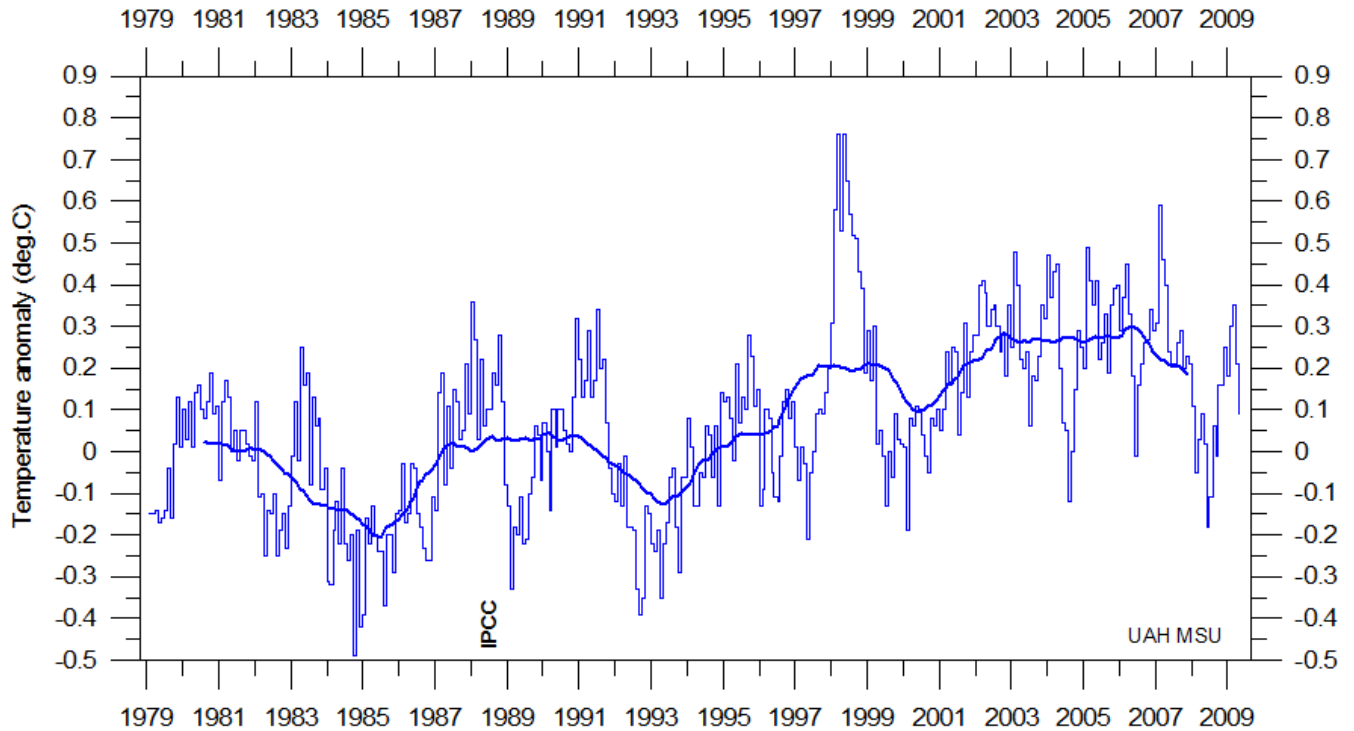


Air temperature 200904 versus average 1998-2006



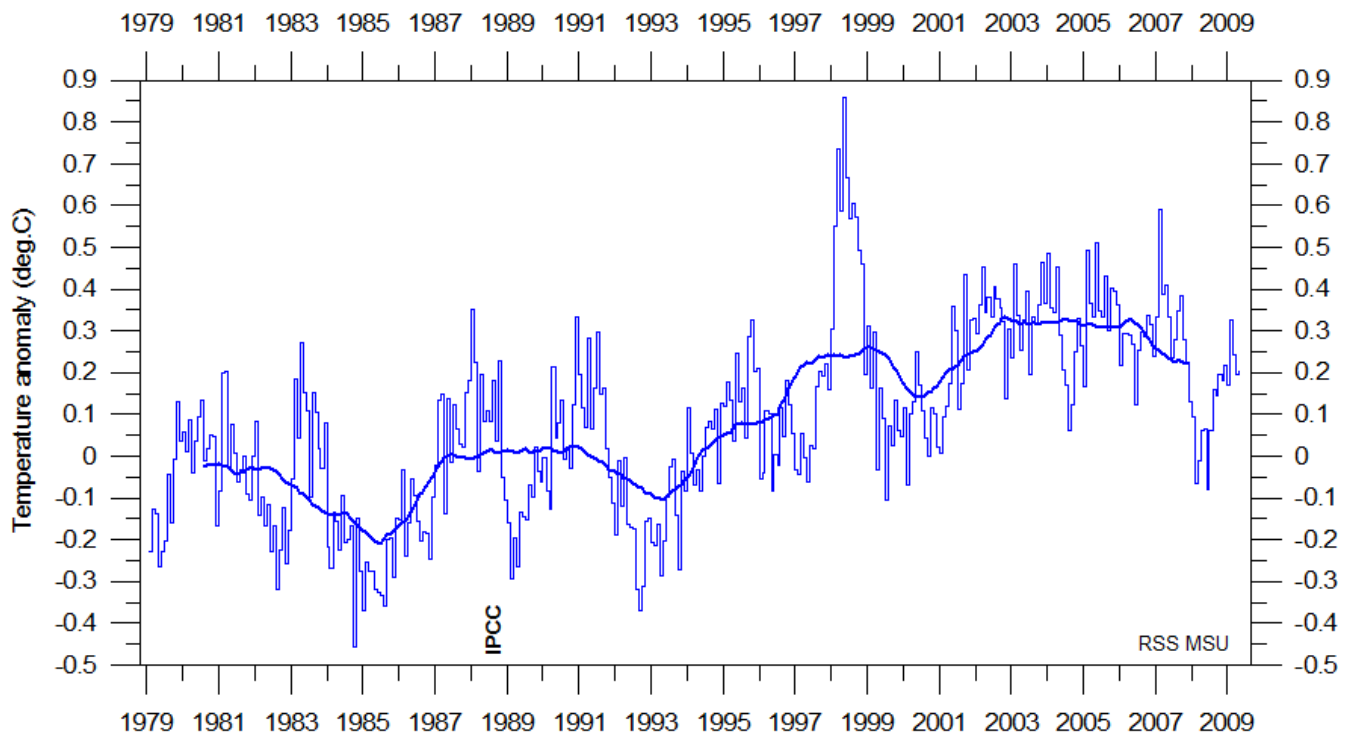
April 2009 surface air temperature compared to the average for April 1998-2006. Green,yellow-red colours indicate areas with higher temperature than the 1998-2006 average, while blue colours indicate lower than average temperatures. Data source: [Goddard Institute for Space Studies](http://www.giss.nasa.gov) (GISS)

Lower troposphere temperature from satellites, updated to April 2009



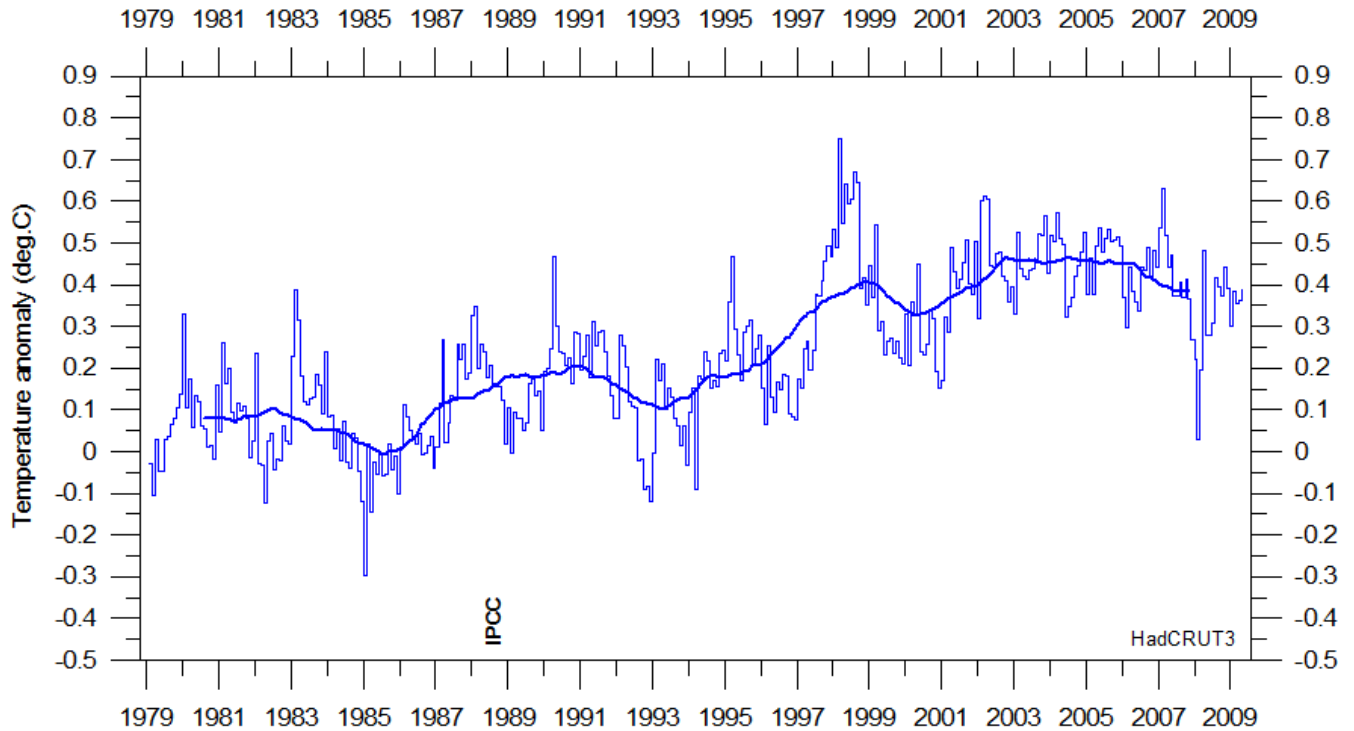
Global monthly average lower troposphere temperature (thin line) since 1979 according to [University of Alabama](#) at Huntsville, USA. The thick line is the simple running 37 month average.

2



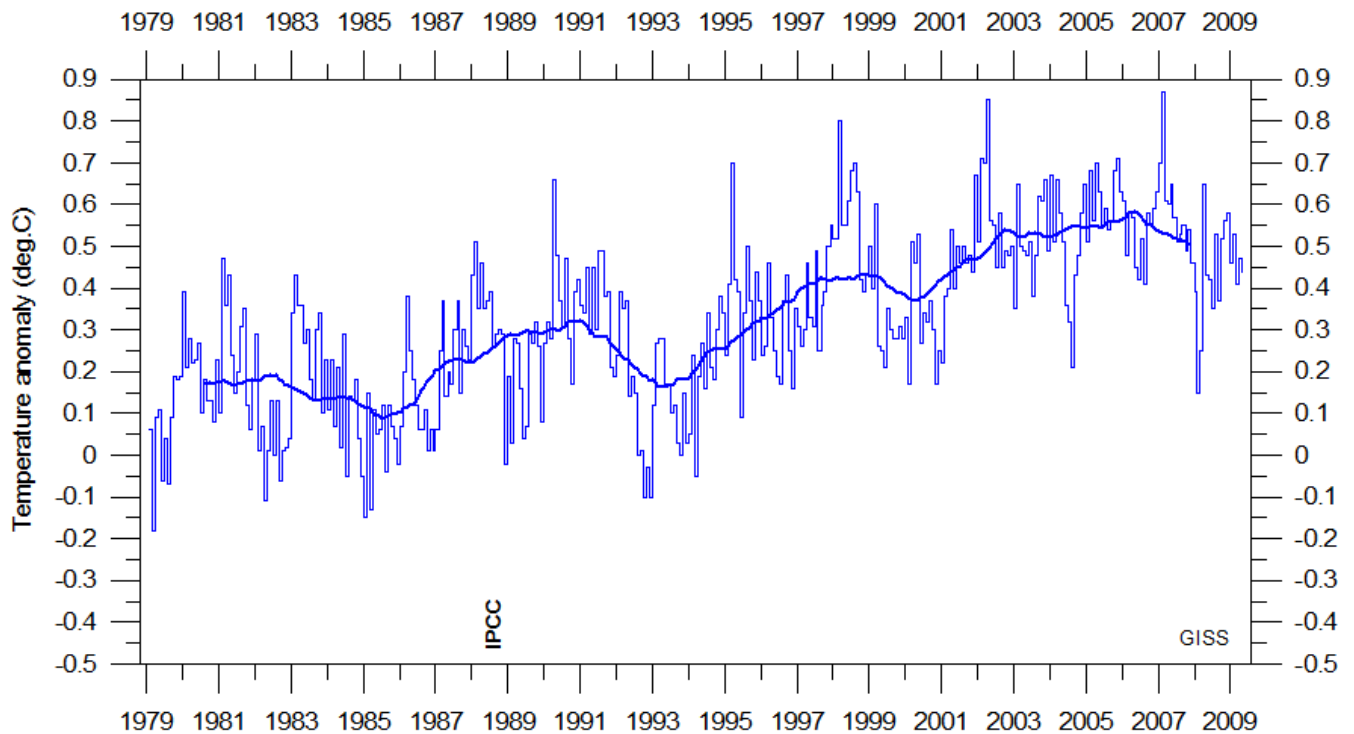
Global monthly average lower troposphere temperature (thin line) since 1979 according to according to [Remote Sensing Systems](#) (RSS), USA. The thick line is the simple running 37 month average.

Global surface air temperature, updated to April-March 2009

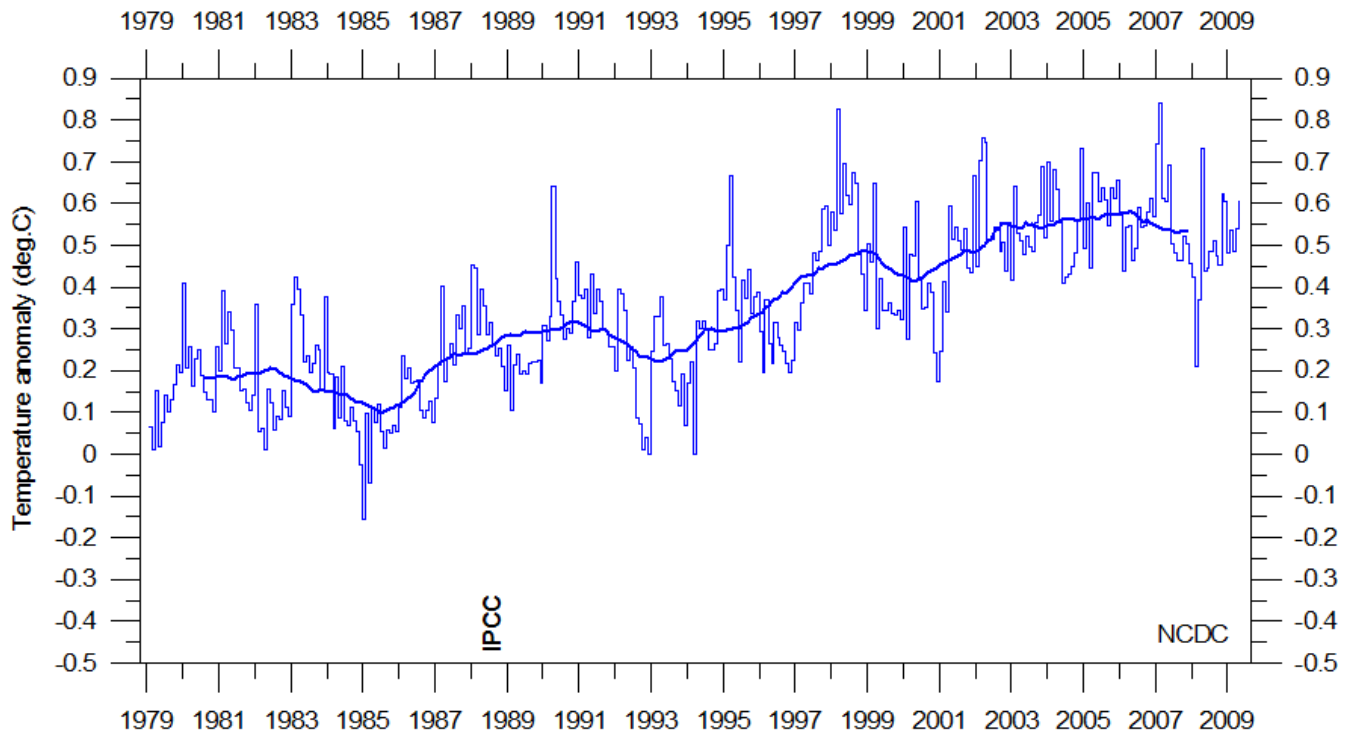


Global monthly average surface air temperature (thin line) since 1979 according to according to the Hadley Centre for Climate Prediction and Research and the University of East Anglia's [Climatic Research Unit \(CRU\)](#), UK. The thick line is the simple running 37 month average.

3

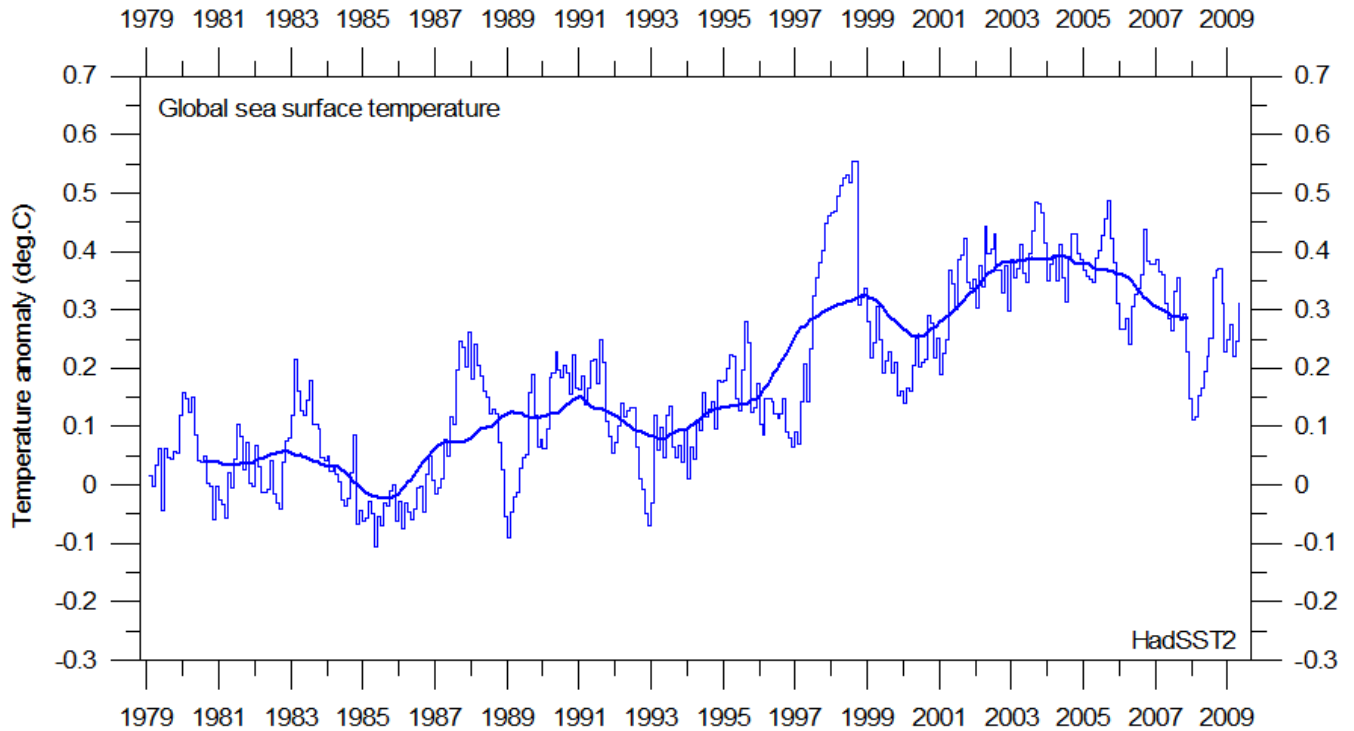


Global monthly average surface air temperature (thin line) since 1979 according to according to the [Goddard Institute for Space Studies \(GISS\)](#), at Columbia University, New York City, USA. The thick line is the simple running 37 month average.



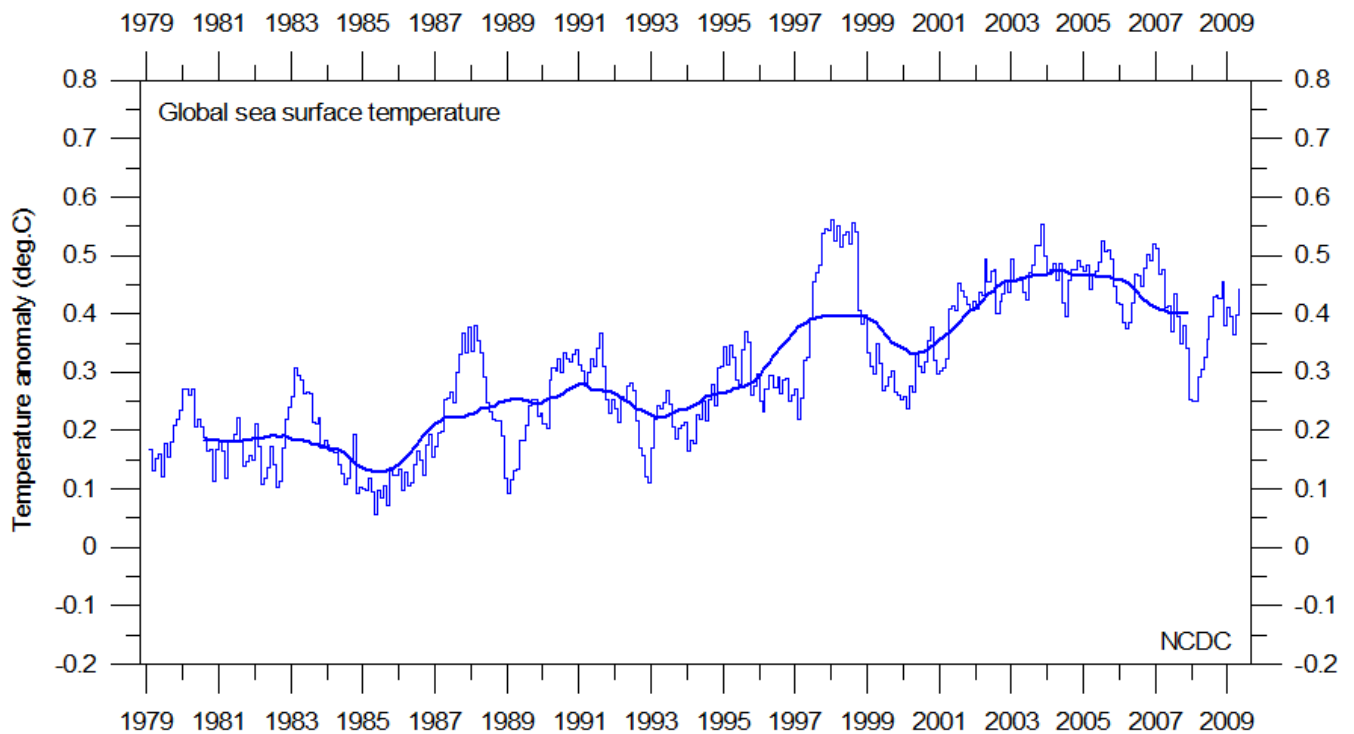
Global monthly average surface air temperature since 1979 according to according to the [National Climatic Data Center \(NCDC\)](#), USA. The thick line is the simple running 37 month average.

Global sea surface temperature, updated to April 2009



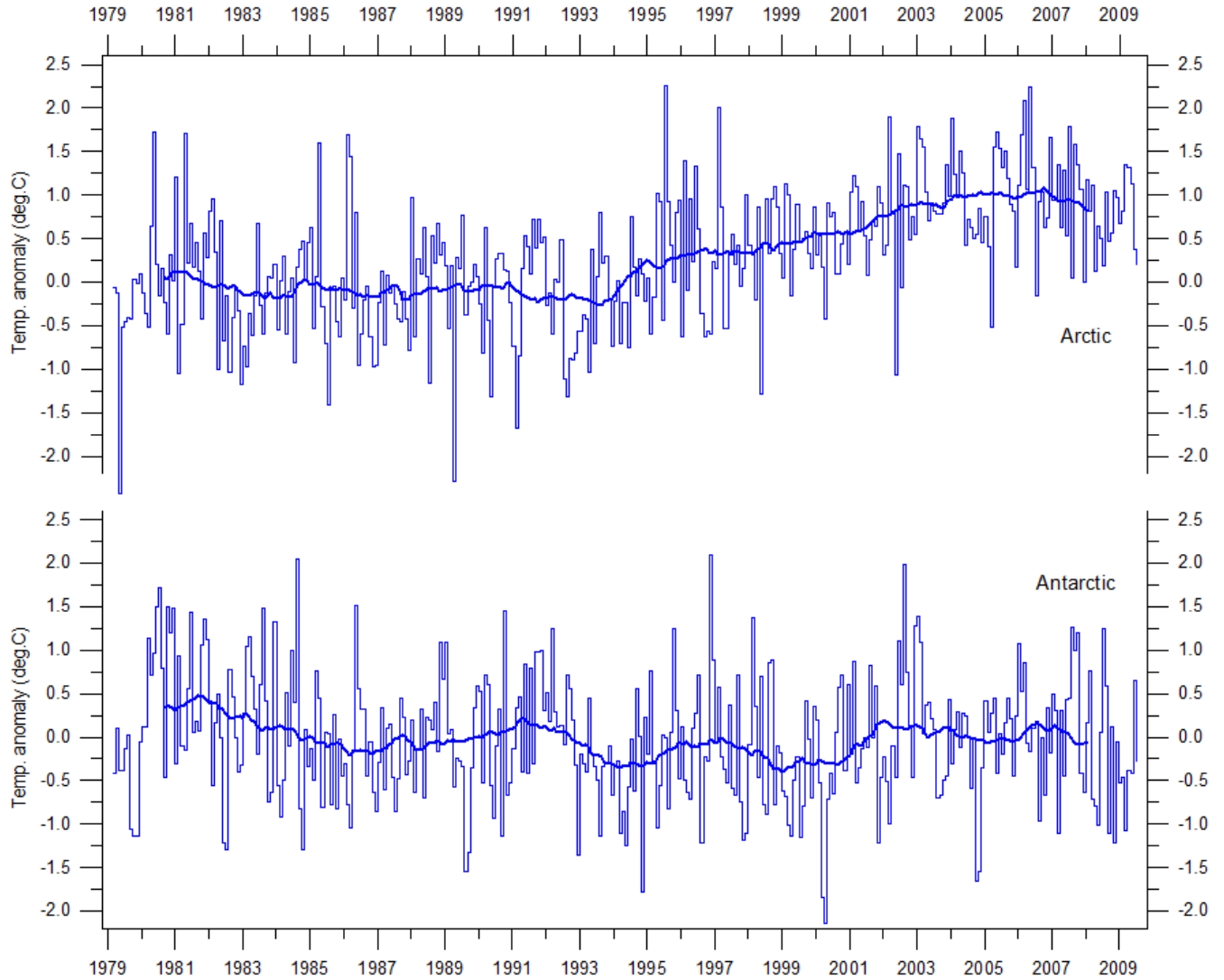
Global monthly average sea surface temperature since 1979 according to University of East Anglia's [Climatic Research Unit \(CRU\)](#), UK. Base period: 1961-1990. The thick line is the simple running 37 month average.

5



Global monthly average sea surface temperature since 1979 according to the [National Climatic Data Center \(NCDC\)](#), USA. Base period: 1901-2000. The thick line is the simple running 37 month average.

Arctic and Antarctic lower troposphere temperature, updated to April 2009



Global monthly average lower troposphere temperature since 1979 for the North Pole and South Pole regions, based on satellite observations ([University of Alabama](#) at Huntsville, USA). The thick line is the simple running 37 month average, nearly corresponding to a running 3 yr average.

Arctic and Antarctic surface air temperature, updated to April 2009

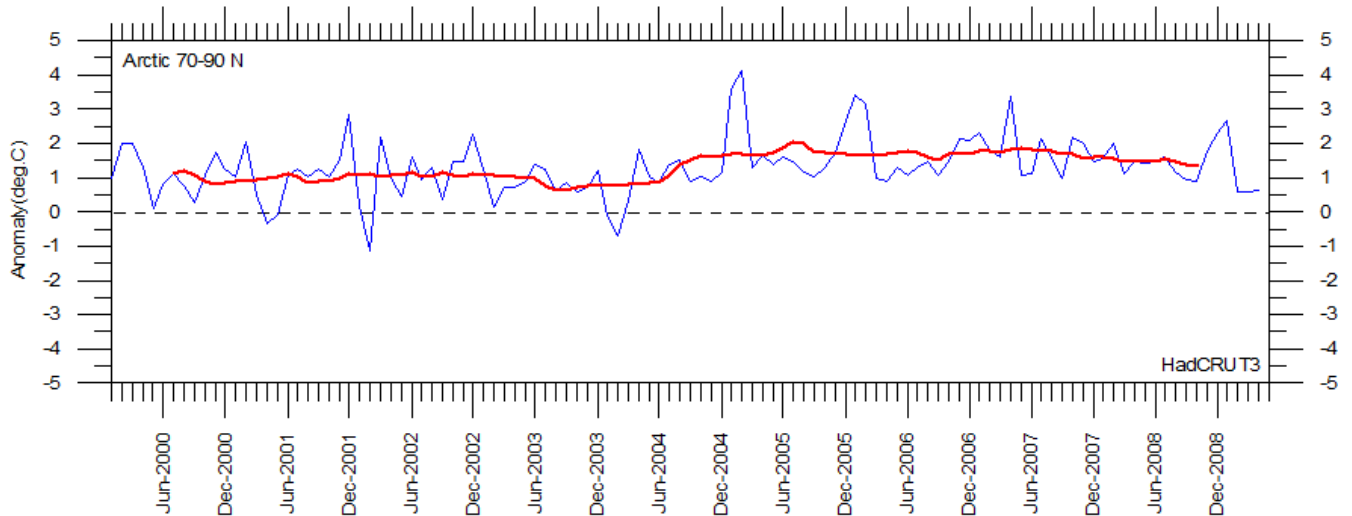


Diagram showing Arctic monthly surface air temperature anomaly 70-90°N since January 2000, in relation to the WMO reference “normal” period 1961-1990. The thin blue line shows the monthly temperature anomaly, while the thicker red line shows the running 13 month average. Data provided by the Hadley Centre for Climate Prediction and Research and the University of East Anglia's [Climatic Research Unit \(CRU\)](#), UK.

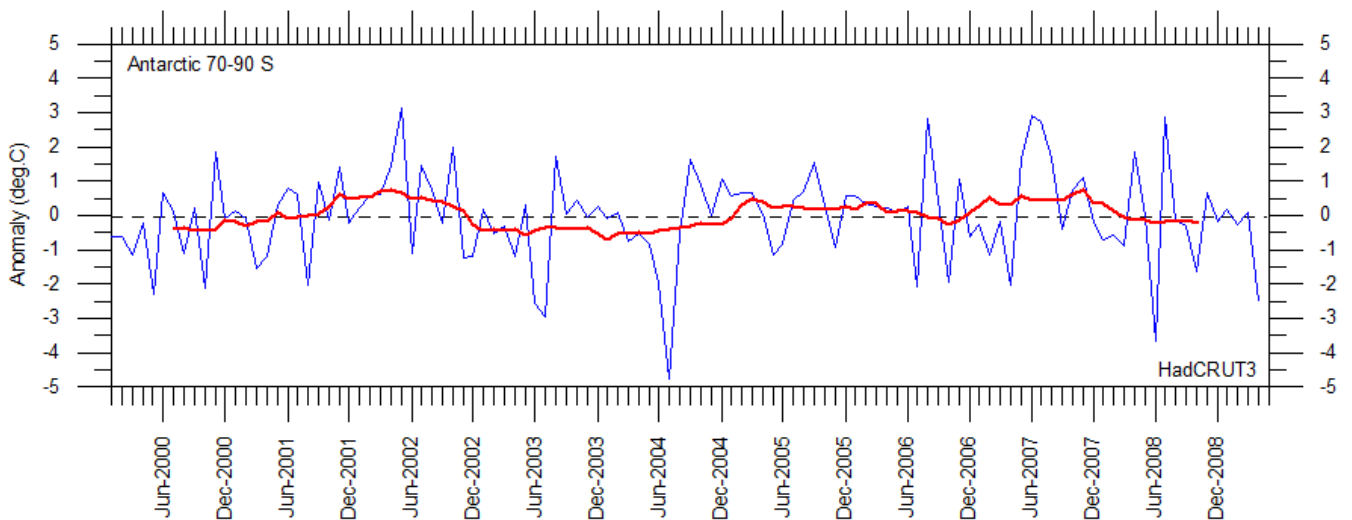


Diagram showing Antarctic monthly surface air temperature anomaly 70-90°S since January 2000, in relation to the WMO reference “normal” period 1961-1990. The thin blue line shows the monthly temperature anomaly, while the thicker red line shows the running 13 month average. Data provided by the Hadley Centre for Climate Prediction and Research and the University of East Anglia's [Climatic Research Unit \(CRU\)](#), UK.

In general, the Arctic temperature record appears to be less variable than the contemporary Antarctic record, presumably at least partly due to the higher number of meteorological stations north of 70°N, compared to the number of stations south of 70°S.

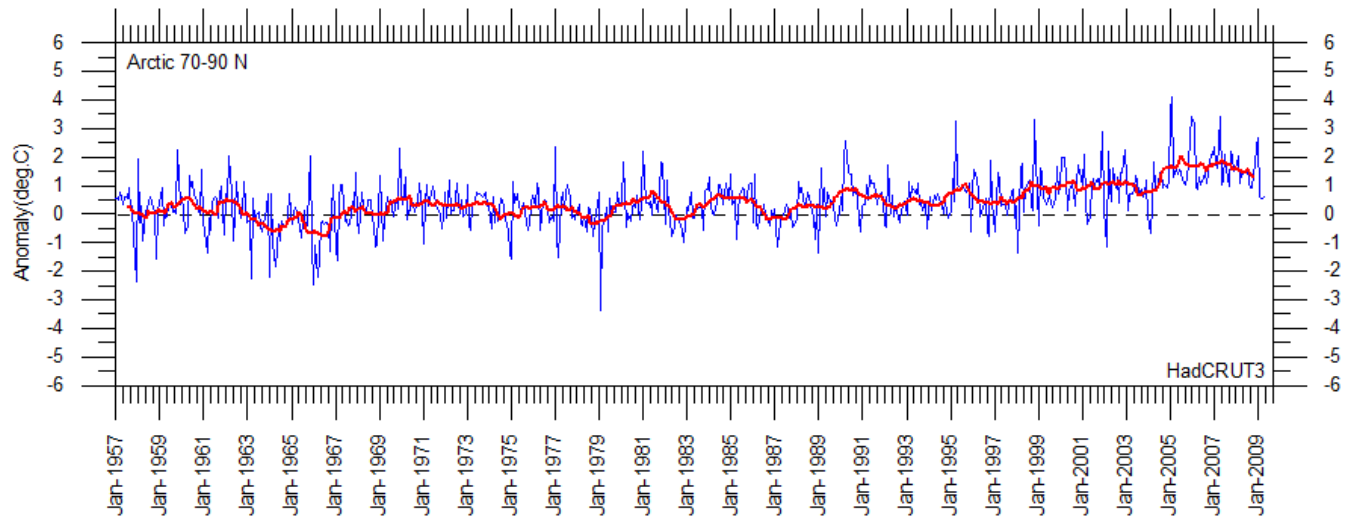


Diagram showing Arctic monthly surface air temperature anomaly 70-90°N since January 1957, in relation to the WMO reference “normal” period 1961-1990. The year 1957 has been chosen as starting year, to ensure easy comparison with the maximum length of the realistic Antarctic temperature record shown below. The thin blue line shows the monthly temperature anomaly, while the thicker red line shows the running 13 month average. Data provided by the Hadley Centre for Climate Prediction and Research and the University of East Anglia’s [Climatic Research Unit \(CRU\)](#), UK.

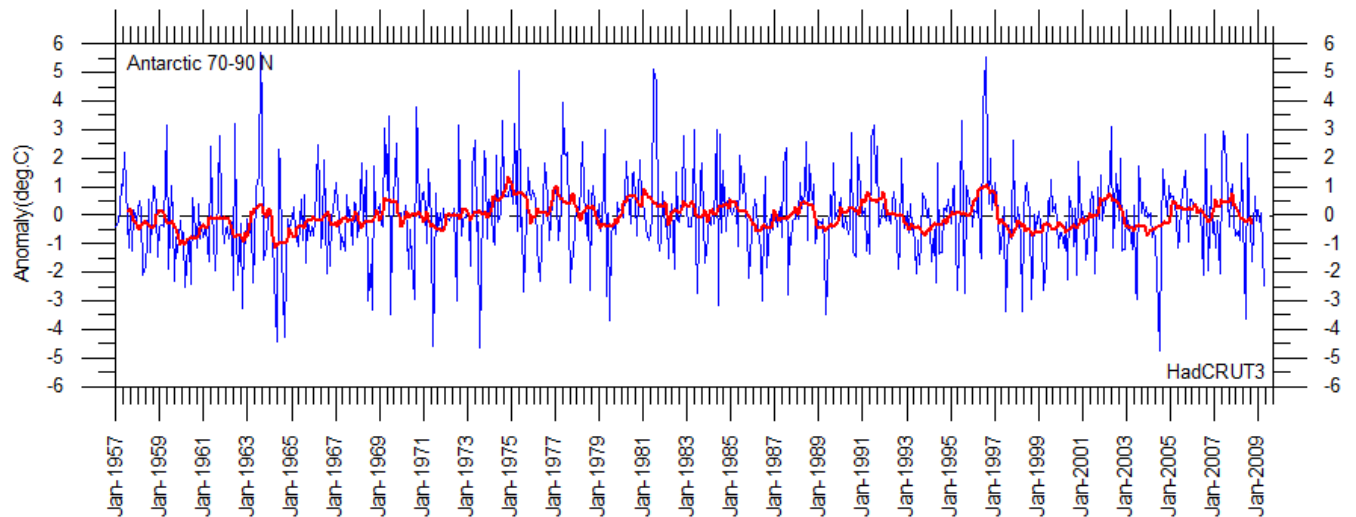


Diagram showing Antarctic monthly surface air temperature anomaly 70-90°S since January 1957, in relation to the WMO reference “normal” period 1961-1990. The year 1957 was an international geophysical year, and several meteorological stations were established in the Antarctic because of this. Before 1957, the meteorological coverage of the Antarctic continent is poor. The thin blue line shows the monthly temperature anomaly, while the thicker red line shows the running 13 month average. Data provided by the Hadley Centre for Climate Prediction and Research and the University of East Anglia’s [Climatic Research Unit \(CRU\)](#), UK.

In general, the Arctic temperature record appears to be less variable than the contemporary Antarctic record, presumably at least partly due to the higher number of meteorological stations north of 70°N, compared to the number of stations south of 70°S.

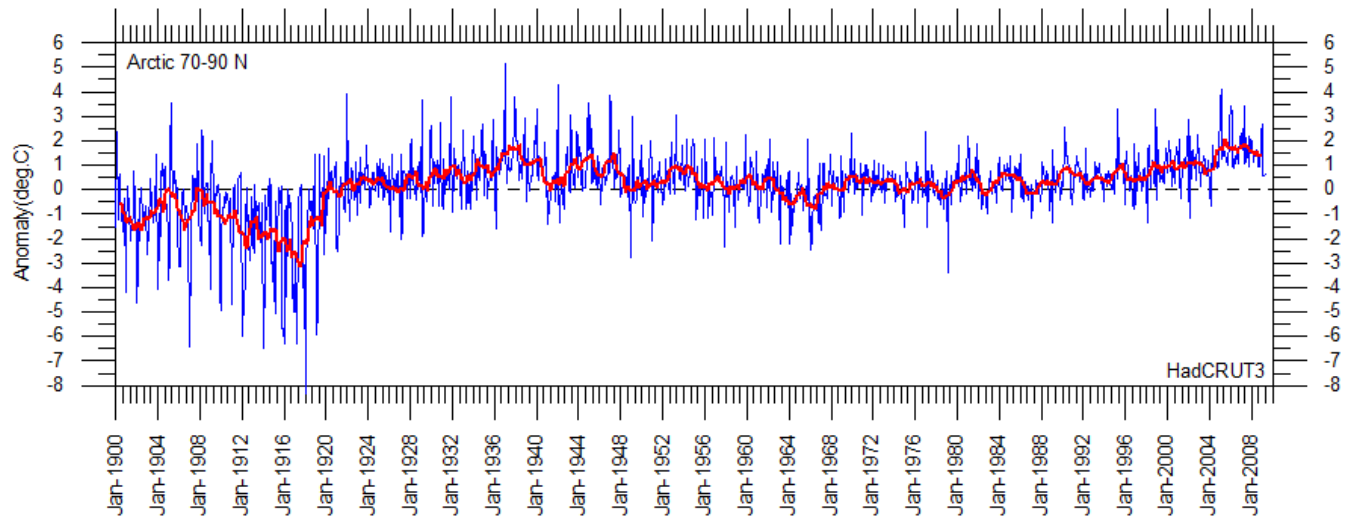
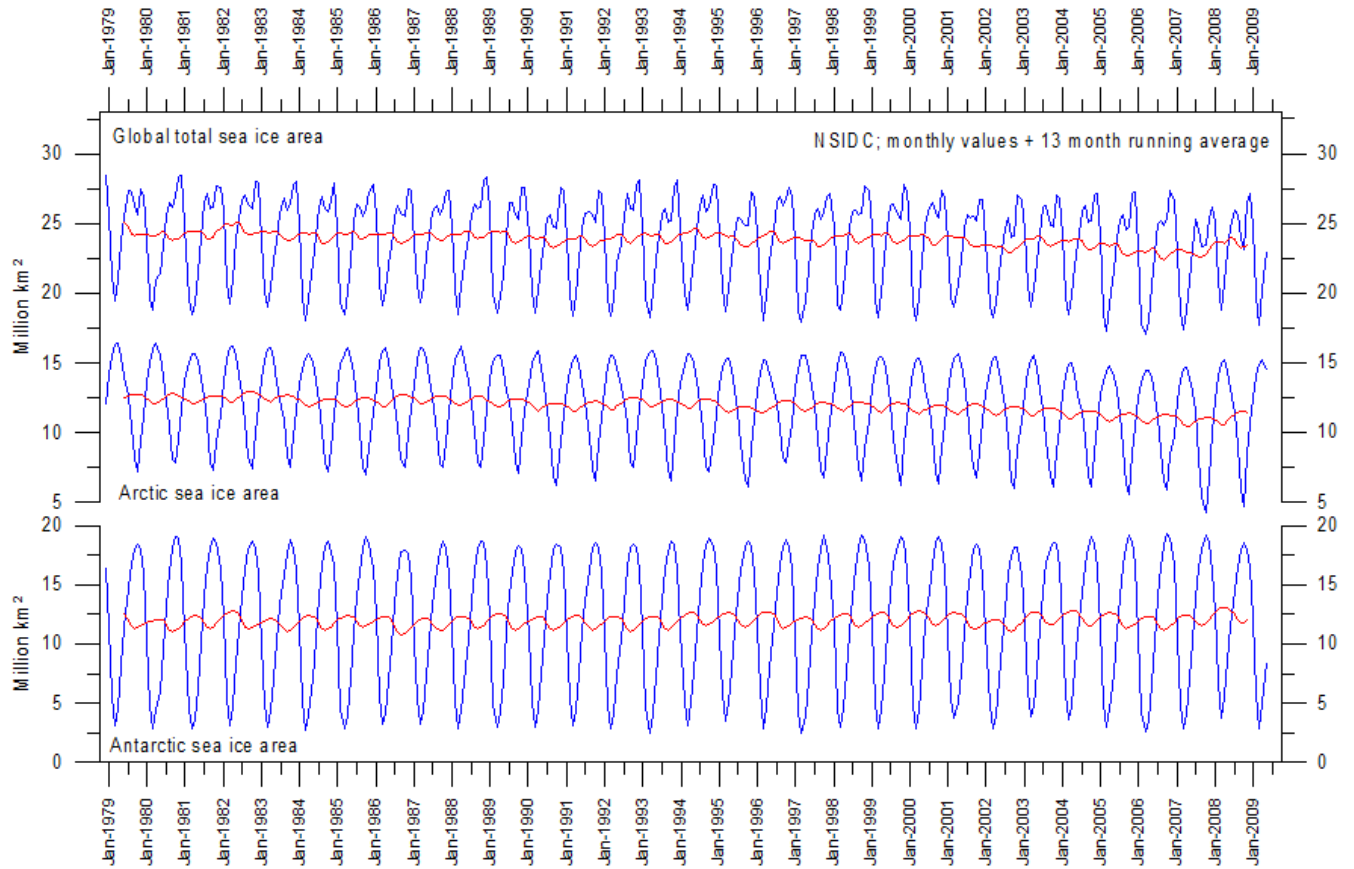


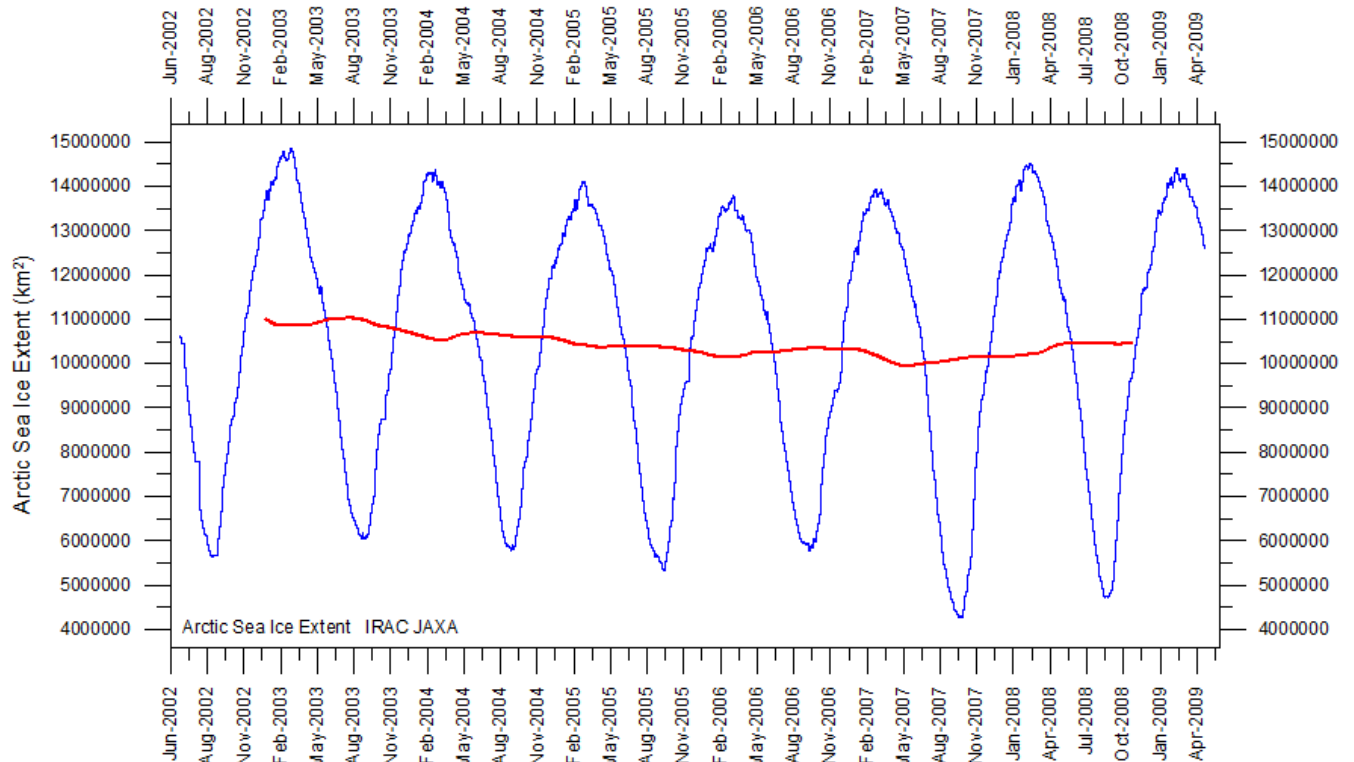
Diagram showing Arctic monthly surface air temperature anomaly 70-90°N since January 1900, in relation to the WMO reference “normal” period 1961-1990. The thin blue line shows the monthly temperature anomaly, while the thicker red line shows the running 13 month average. In general, the range of monthly temperature variations decreases throughout the first 30-50 years of the record, reflecting the increasing number of meteorological stations north of 70°N over time. Especially the period from about 1930 saw the establishment of many new Arctic meteorological stations, first in Russia and Siberia, and following the 2nd World War, also in North America. Because of the relatively small number of stations before 1930, details in the early part of the Arctic temperature record should not be over interpreted. The rapid Arctic warming around 1920 is, however, clearly visible, and is also documented by other sources of information. The period since 2000 is warm, about as warm as the period 1930-1940. Data provided by the Hadley Centre for Climate Prediction and Research and the University of East Anglia's [Climatic Research Unit \(CRU\)](#), UK.

Arctic and Antarctic sea ice, updated to April 2009



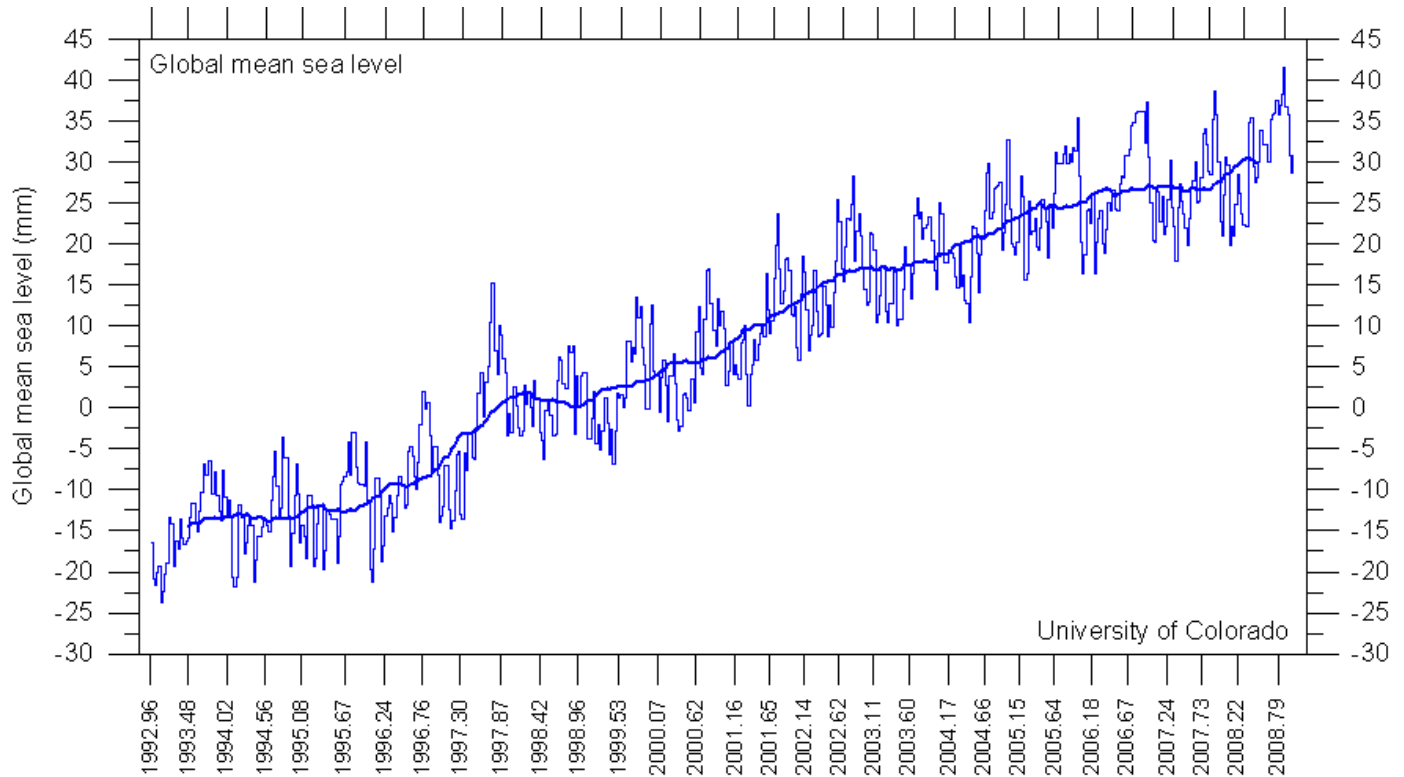
10

Graphs showing monthly Antarctic, Arctic and global sea ice extent since November 1978, according to the [National Snow and Ice data Center \(NSIDC\)](#).



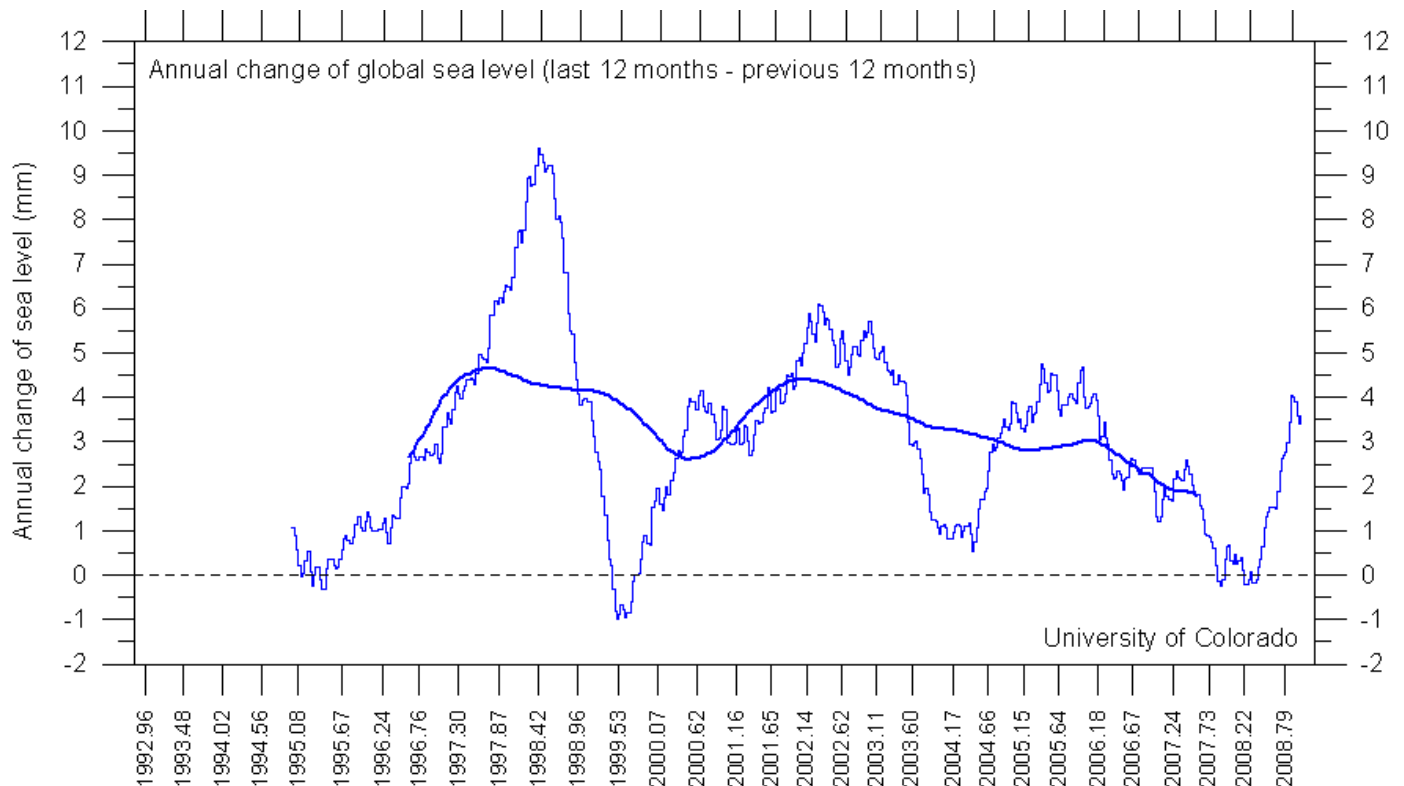
Graph showing daily Arctic sea ice extent since June 2002, by courtesy of [Japan Aerospace Exploration Agency \(JAXA\)](#).

Global sea level, updated to April 2009



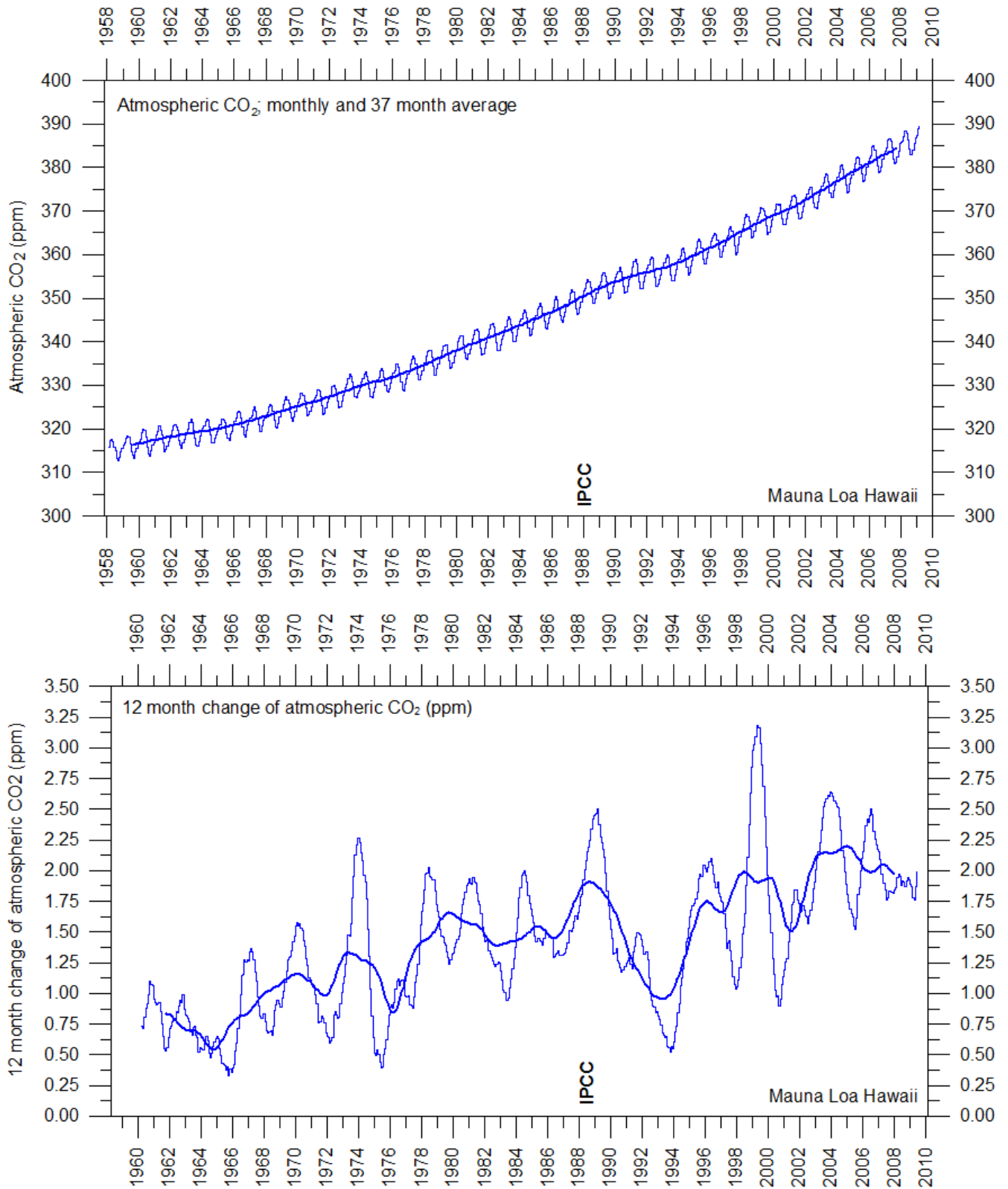
Global monthly sea level since late 1992 according to the Colorado Center for Astrodynamic Research at [University of Colorado at Boulder](#), USA. The thick line is the simple running 37 observation average, nearly corresponding to a running 3 yr average.

11



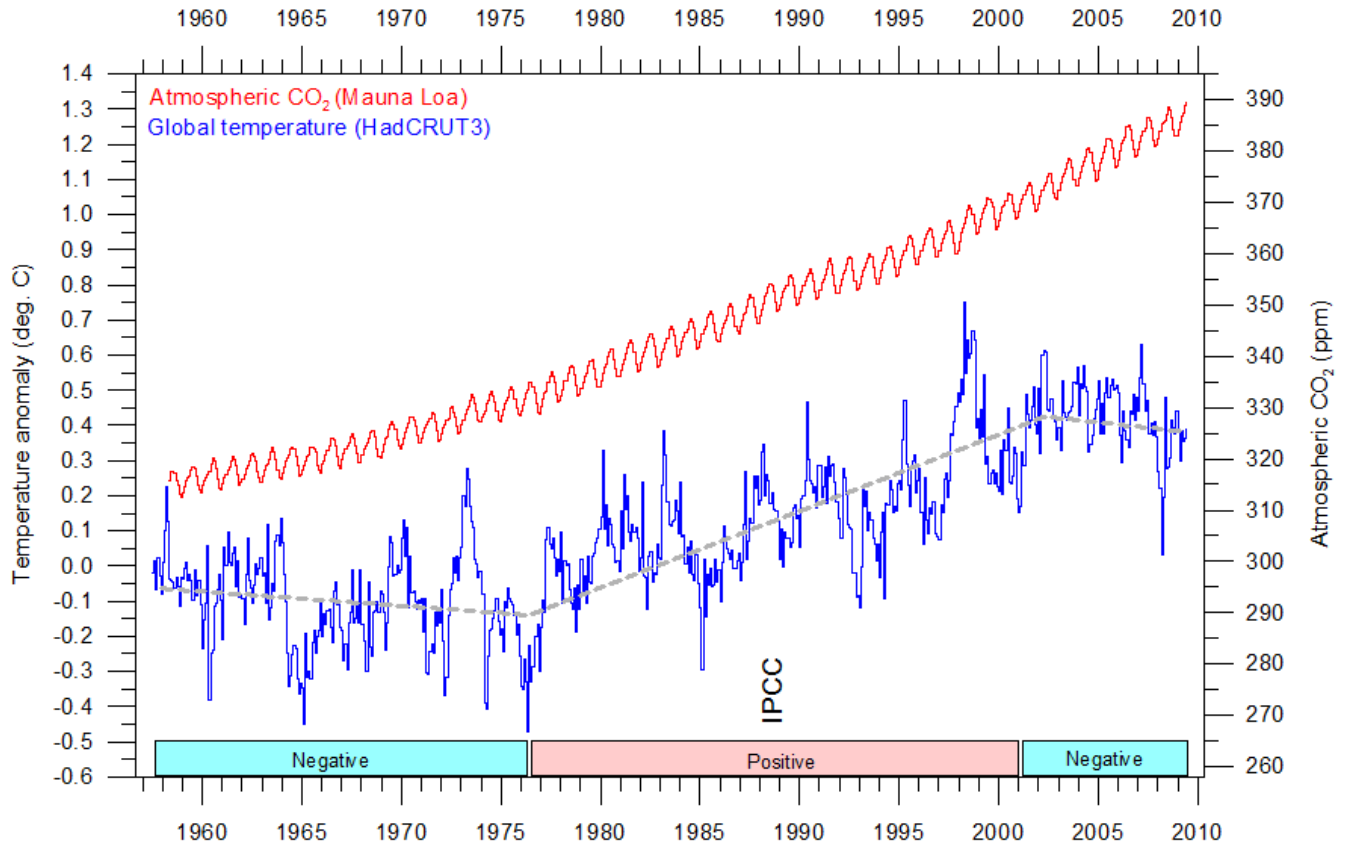
Annual change of global sea level since late 1992 according to the Colorado Center for Astrodynamic Research at [University of Colorado at Boulder](#), USA. The thick line is the simple running 3 yr average.

Atmospheric CO₂, updated to April 2009

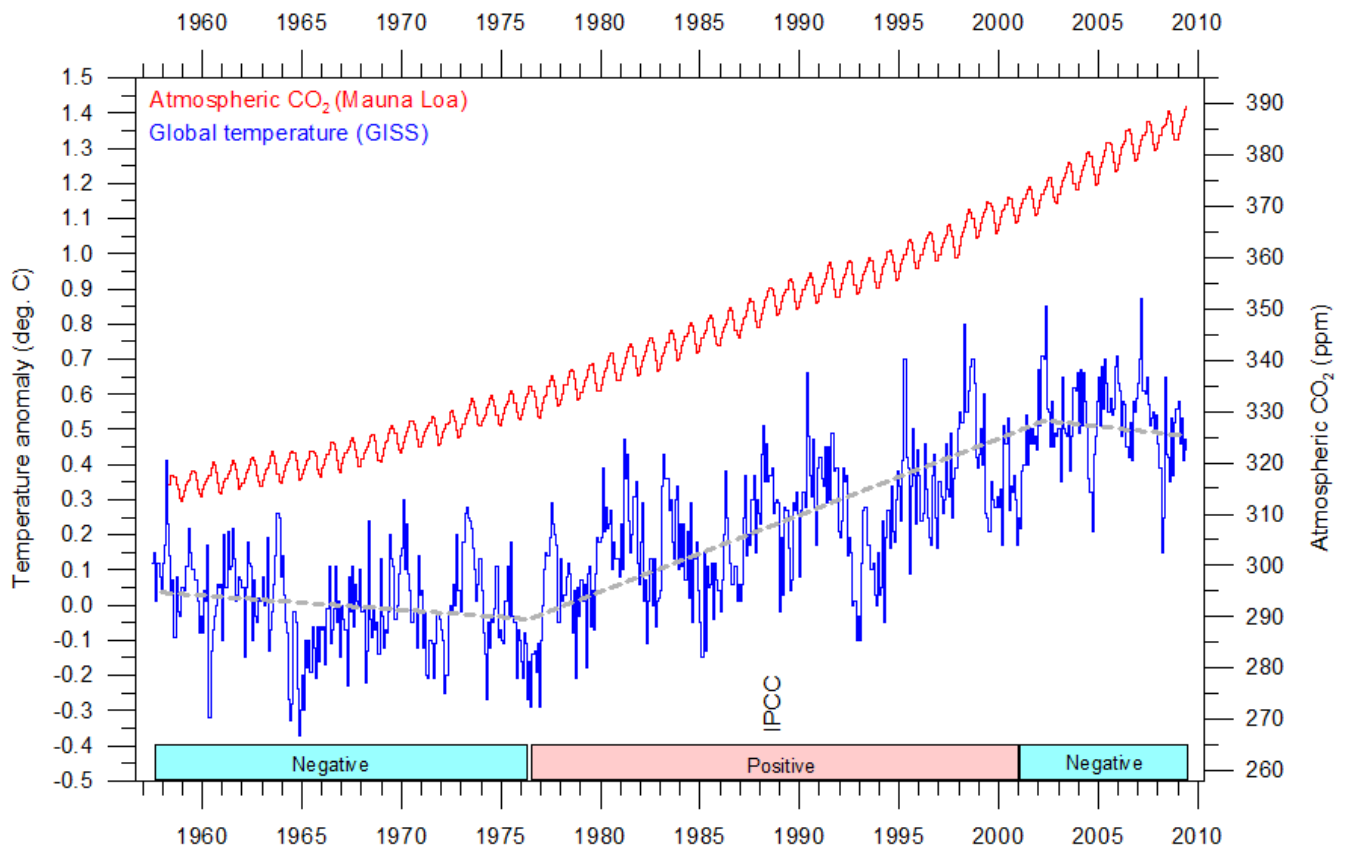


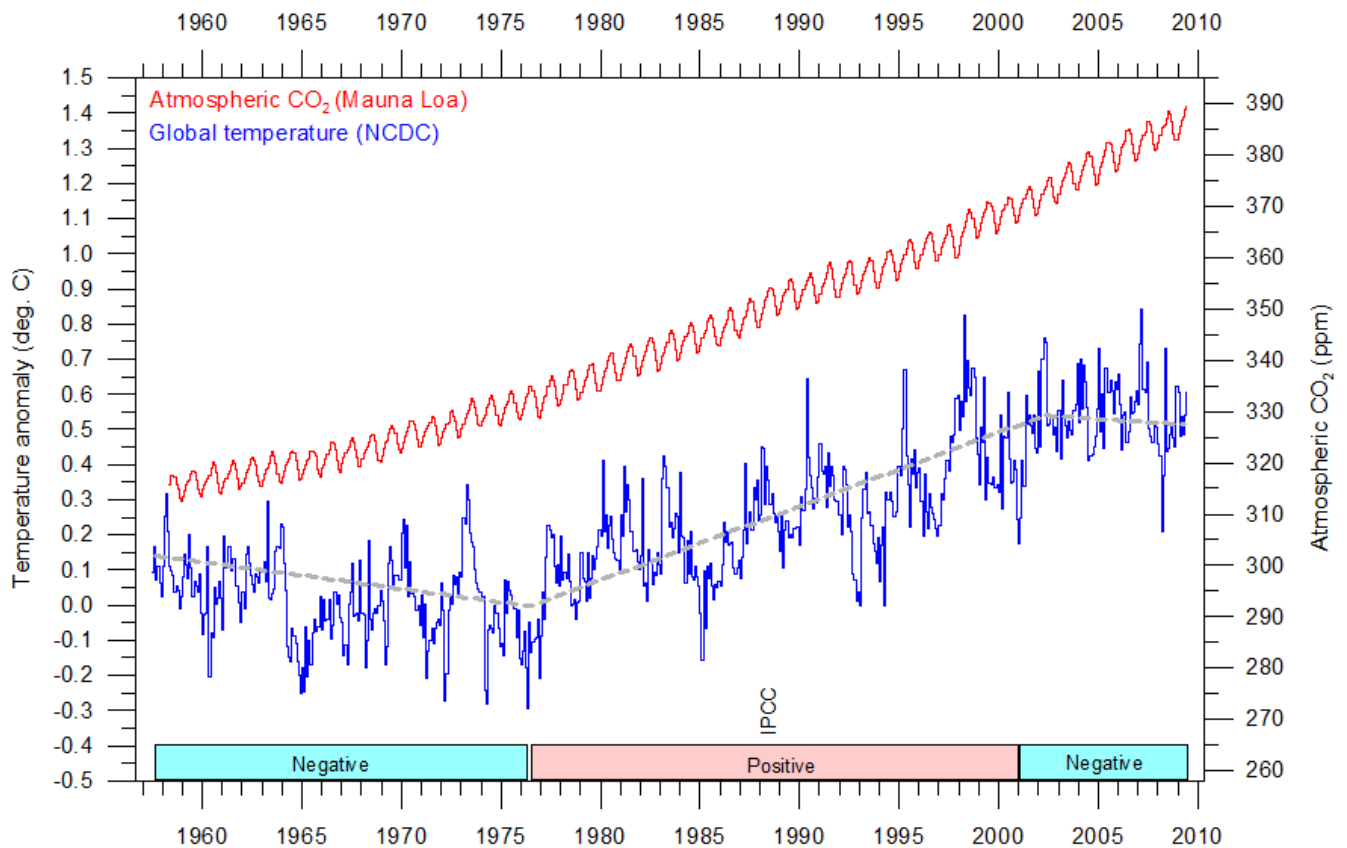
Monthly amount of atmospheric CO₂ (above) and annual growth rate (below; average last 12 months minus average preceding 12 months) of atmospheric CO₂ since 1959, according to data provided by the [Mauna Loa Observatory](#), Hawaii, USA. The thick line is the simple running 37 observation average, nearly corresponding to a running 3 yr average.

Global surface air temperature and atmospheric CO₂, updated to April 2009



13





Diagrams showing HadCRUT3, GISS, and NCDC monthly global surface air temperature estimates (blue) and the monthly atmospheric CO₂ content (red) according to the [Mauna Loa Observatory](#), Hawaii. The Mauna Loa data series begins in March 1958, and 1958 has therefore been chosen as starting year for the diagrams. Reconstructions of past atmospheric CO₂ concentrations (before 1958) are not incorporated in this diagram, as such past CO₂ values are derived by other means (ice cores, stomata, or older measurements using different methodology, and therefore are not directly comparable with modern atmospheric measurements). The dotted grey line indicates the approximate linear temperature trend, and the boxes in the lower part of the diagram indicate the relation between atmospheric CO₂ and global surface air temperature, negative or positive.

Most climate models assume the greenhouse gas carbon dioxide CO₂ to influence significantly upon global temperature. Thus, it is relevant to compare the different global temperature records with measurements of atmospheric CO₂, as shown in the diagrams above. Any comparison, however, should not be made on a monthly or annual basis, but for a longer time period, as other effects (oceanographic, clouds, etc.) may well override the potential influence of CO₂ on short time scales such as just a few years.

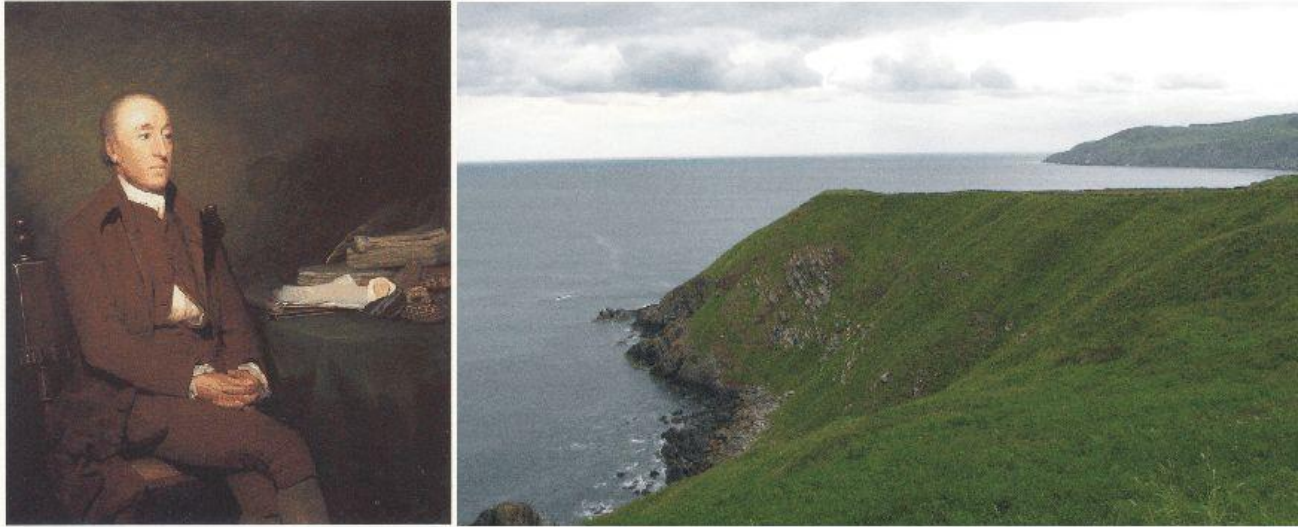
It is of cause equally inappropriate to present new meteorological record values, whether daily, monthly or annual, as support for the hypothesis ascribing high importance of atmospheric CO₂ for global temperatures. Any such short-period meteorological record value may well be the result of other phenomena than atmospheric CO₂.

What exactly defines the critical length of a relevant time period to consider for evaluating the alleged high importance of CO₂ remains elusive, and is still a topic for debate. The critical period length must, however, be inversely proportional to the importance of CO₂ on the global temperature, including feedback effects, such as assumed by most climate models.

After about 10 years of global temperature increase, IPCC was established in 1988. Presumably, many scientists then believed their empirical and theoretical understanding of climate dynamics sufficient to conclude about the importance of CO₂ for global temperature. For obtaining public and political support for the CO₂-hypothesis the 10 year warming period leading up to 1988 in all likelihood was important. Had the global temperature instead been decreasing, public support for the hypothesis would have been difficult to obtain. Adopting this approach as to critical time length, the varying relation (positive or negative) between global temperature and atmospheric CO₂ has been indicated in the lower panels of the three diagrams above.

Climate and history; one example among many

1788: James Hutton visits Siccar Point



James Hutton (left). Siccar Point on the Berwickshire coast, looking east on 17 June 2008 (right).

15

James Hutton (1726-1797) was born in Edinburgh on 3 June 1726. During his education he studied law, chemistry and eventually became a Doctor of Medicine in 1749. He inherited two farms near Reston in Berwickshire east of Edinburgh, and set about making improvements, introducing farming practices from other parts of Britain.

By this, he became highly interested in both meteorology and geology, and became very fond of studying what was exposed by digging drainage channels on his properties. By this he noted that some types of solid bedrock apparently contained remnants of dead animals of unknown age. Around 1760 his geological interest had grown considerably, and he was beginning to form his own opinion on many geological issues. He was soon realizing that the Biblical age of Earth (6000 years old) was much too short a time range to explain his observations on past environmental changes. From 1785 he began to publish his ideas for a wider audience, but was generally met with refutations, as he had no really convincing geological evidence to support his ideas with. So the general opinion of planet Earth being about 6000 years old prevailed.

In 1788 James Hutton visited the Berwickshire coast with two friends, John Playfair and Sir James Hall (McKirdy et al. 2007) Between Dunbar and Eyemouth they visited a small peninsula called Siccar Point (see photo above). Here they found a peculiar geological outcrop, showing two geological units of sandstone and greywacke, but with the individual layers standing almost perpendicular to each other (see photo below). This was the very first example of what later was to be known as a geological unconformity.

Hutton and his friends immediately grasped the high significance of what they saw at Siccar Point. Hutton reasoned that both types of rock must have been deposited on the bottom of an ocean, and that the almost 90° tilting visible (see photo below) required substantial changes in the surface form of the planet. In between the deposition of the two units there must have been a period of unknown length, where layers must have been eroded and tilted, leading to formation of the unconformity. This was clearly proof of a very dynamic planet. This conclusion was in contradiction to the notion of an essentially stable environment in equilibrium since the days of creation, a paradigm which in Europe had made scientific progress difficult. A further realization of equal importance was that the geometrical relationship between the two sets of layers could not have formed in the seven days prescribed in the Bible for the formation of the Earth. Indeed, any timescale measured in terms of human existence would be insufficient to accommodate the chain of events that Hutton and his companions had deduced by analyzing the geological section at Siccar Point.

When Hutton put forward his revolutionary concept of deep time and an ever changing dynamic planet, this was not accepted overnight by the scientific community. It was first after his death in 1797 that the concept of extensive time for the formation of the present surface of the planet slowly gained acceptance, together with the understanding that the environment and landscapes always are changing, sometimes slowly, sometimes rapid. Hutton's legacy thereby was to free later generations of scientists from a mental straightjacket, allowing them to think freely and thereby make science develop and blossom. The famous geologist Charles Lyell enthusiastically

embraced Hutton's ideas and clearly presented them in his now classic book, *Principles of Geology*. It is interesting to note that Charles Darwin read Lyell's book while sailing on the Beagle expedition. Hutton's idea of an "abyss of time" thus provided Darwin with the extended timeframe he needed to make his developing ideas on biological evolution appear credible.



Hutton's unconformity at Siccar Point on 17 June 2008, looking NE. Both geological units consist of parallel sediment layers (Red Sandstone and Greywacke) deposited almost horizontally by water. The significant change in orientation across the unconformity signals that a major reorganization of what was up and down must have taken place during the time between the depositions of these two units.



Lateral drainage channel at Siccar Point, looking SW on 17 June 2008. The marked valley is dry today, but was presumably cut by meltwater flowing along the southern margin of a Weichselian glacier draining east along the Firth of Forth, eastern Scotland.

It was first much later when Alfred Wegener in 1912 proposed his theory of continental drift (*Kontinentalverschiebung*) that the importance of the always ongoing geological processes for global climate began to dawn for geologists. It also took some time before the significance of climate changes on sedimentary strata like those seen at Siccar Point began to be understood. Actually each layer seen in the rocks at Siccar Point (see photo above) reflects some kind of environmental change, either on land or in the ocean, or within both. But Hutton's observations at Siccar Point was the very starting point for realizing that planet Earth is a highly active planet, where different processes never are in perfect equilibrium. Environmental change is always occurring.

Hutton's observations and deductions at Siccar Point thus had profound effect for the subsequent scientific development, especially within earth and biological science. Siccar point is arguably the most important geological site in the world (McKirdy et al. 2007).

The profound dynamic nature of planet Earth demonstrated by Hutton's unconformity at Siccar Point is emphasised by the geomorphology in the near surroundings. In contrast to Hutton and his friends, who came to Siccar Point by boat, most visitors today will come by car, to walk the final kilometre to the coastal site. The Siccar Point parking place is located in a peculiar dry valley (see photo below). This is a relict meltwater channel, cut by meltwater running along the southern margin of a big glacier flowing east along the Firth of Forth topographic depression about 22,000 years ago. This might well have been the same ice stream which was responsible for another famous geological locality at Blackford Hill in southern Edinburgh, where peculiar scratches on bedrock were identified as being the result of glacier action by Jean Louis Agassiz in 1840, thereby giving the glacial hypothesis a significant momentum 52 years after Hutton's visit at Siccar Point. Our scientific understanding of the dynamic nature of planet Earth made huge progress during this short time span from 1788 to 1840, both with regard to geology and climate.

References

McKirdy, A., Gordon, J. and Crofts, R. 2007. *Land of mountain and flood. The geology and landforms of Scotland*. Birlinn Limited, Edingburgh, Scotland, 324 pp.

All above diagrams with supplementary information (including links to data sources) are available on www.climate4you.com

Yours sincerely, Ole Humlum (Ole.Humlum@geo.uio.no)

22 May 2009.